

Transportable Log Homes/Design Portfolio

**NEW
2016 EDITION**



Norwegian Log transportable log homes



Introduction

Welcome to Norwegian Log's design portfolio, an easy-to-use guide to help you choose from our standard transportable homes. They all comply fully with the Caravan Act as mobile homes, which means they are exempt from Building Regulations. And they are the only mobile homes available in the UK to Norwegian Log's high standard of log construction.

With up to four bedrooms and two bath/shower rooms - including ensuite facilities - these homes are designed to meet a wide variety of needs, from private owners to leisure developers (see examples opposite). Our versatile standard designs are based on many years' experience, and we have found that they meet most clients' needs. However, we do have a bespoke design service available if you have a specific requirement.

Key advantages

Norwegian Log transportable homes use solid log construction, which means they offer so much more than caravans, chalet-vans or prefabs.

- Stylish interiors, and low external visual impact - ideal for environmentally sensitive areas
- Natural thermal insulation from solid log for year-round comfort - cool in summer, warm in winter
 - Only minimal maintenance needed - indefinite lifespan and low running costs

Further Information

For your copy of our full-colour brochure, or further information on specifications and prices, please contact Norwegian Log (details on back cover)

Norwegian Log transportable homes - typical applications



Your Home/Annexe?

- Ideal replacement for your existing mobile home, or as an annexe
- Makes the most of your Certificate of Lawful Development (CLD)



Rural Employer?

- Comfortable accommodation for your family or employees
- Meets requirements of NPPF (National Planning Policy Framework) - Paragraph 55)



Harleyford Estate, Marlow

Holiday home owner?

- Light, spacious - and perfect for year-round use
- A solid asset with enhanced letting potential



Cottesmore Lodges, Sussex

Leisure developer?

- Quick and simple delivery - from order to site in just weeks
- Visibly higher quality that visitors appreciate

The Alpine Compact 2 bedrooms - 39.47m² Floor Area (425 sq.ft.)

Norwegian Log



Room Dimensions - Imperial measurements

Lounge: 12' 6" x 11' 6"

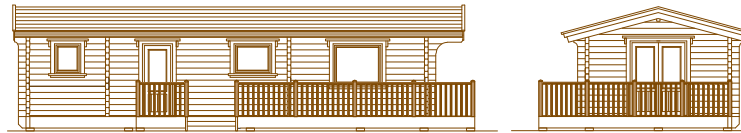
Kitchen: 13' 2" x 5' 2"

Bedroom 1: 11' 0" x 7' 1"

Bedroom 2: 11' 0" x 7' 1"

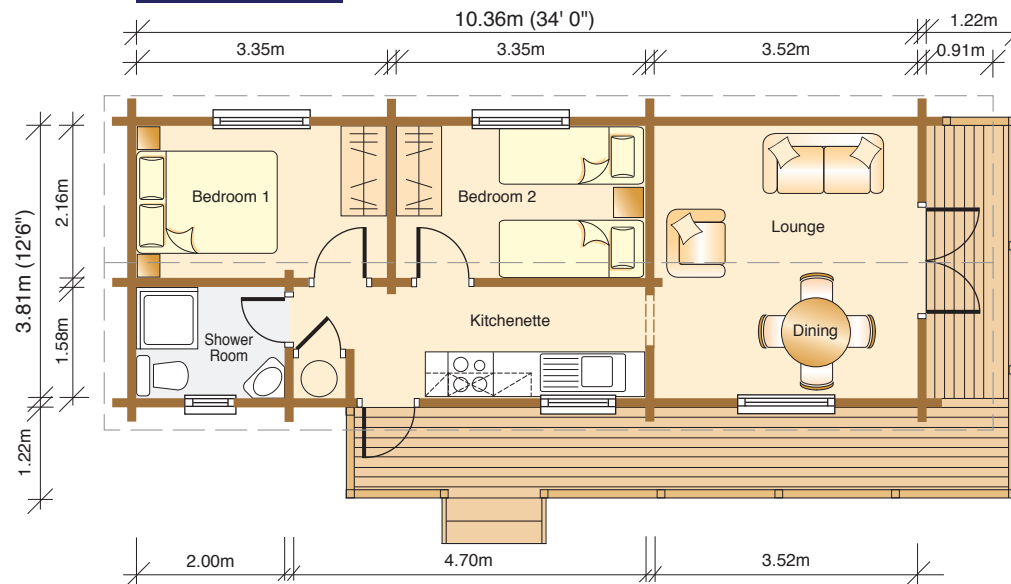
Shower Room: 6' 6" x 5' 2"

The various options shown here for furniture and fittings are for illustration purposes only



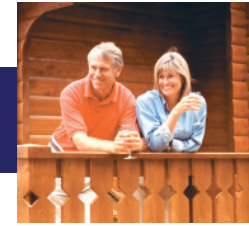
Elevations/Scale 1:200

Floor Plan/Scale 1:100



The Cresta 2 bedrooms - 43.92m² Floor Area (473 sq.ft.)

Norwegian Log



Room Dimensions -
Imperial measurements

Entrance Hall: 5' 8" x 4' 9"

Lounge: 15' 6" x 13' 6"

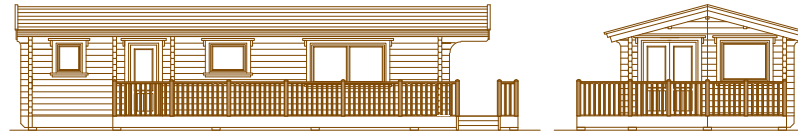
Kitchen: 7' 0" x 5' 8"

Bedroom 1: 12' 0" x 7' 7"

Bedroom 2: 7' 7" x 7' 0"

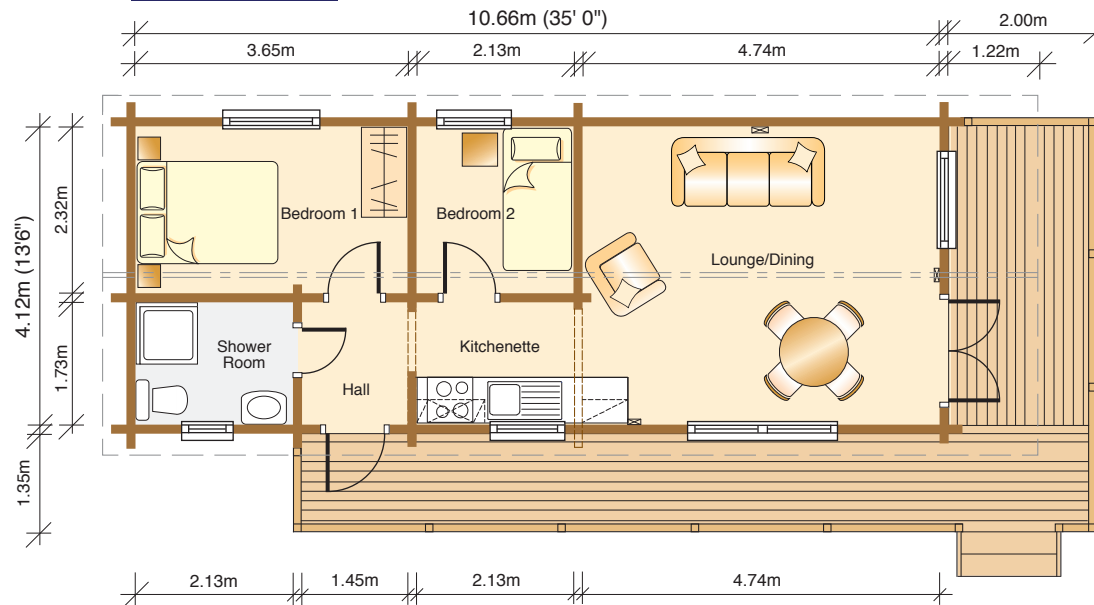
Shower Room: 7' 0" x 5' 8"

The various options shown here
for furniture and fittings are
for illustration purposes only



Elevations/Scale 1:200

Floor Plan/Scale 1:100



The Tirol Annexe 1 bedroom - 48.44m² Floor Area (521 sq.ft.)

Norwegian Log



Room Dimensions -
Imperial measurements

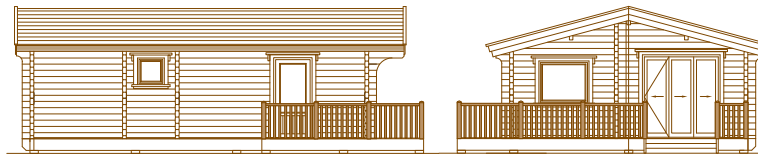
Living Area:
13' 5" / 15' 9" x 19' 6"

Bedroom: 12' 0" x 9' 0"

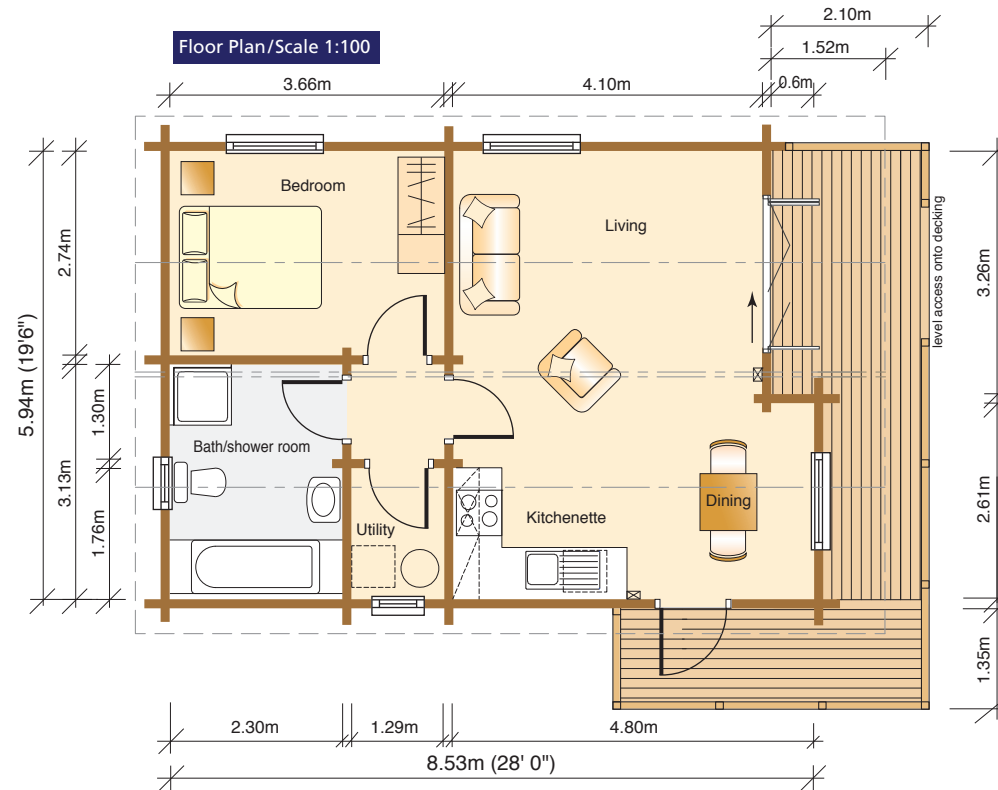
Shower Room: 10' 3" x 7' 6"

Utility Room: 5' 9" x 4' 2"

*The various options shown here
for furniture and fittings are
for illustration purposes only*

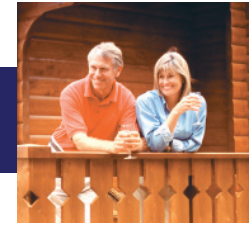


Elevations/Scale 1:200



The Brecon 2 bedrooms - 51.82m² Floor Area (558 sq.ft.)

Norwegian Log



Room Dimensions - Imperial measurements

Entrance Hall: 7' 3" x 3' 7"

Living Area:
13' 9"/16' 0" x 17' 0"

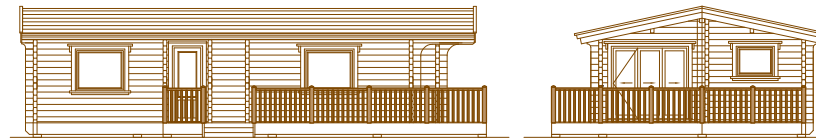
Bedroom 1: 10' 9" x 9' 6"

Bedroom 2: 10' 9" x 7' 3"

Shower Room: 6' 9" x 6' 0"

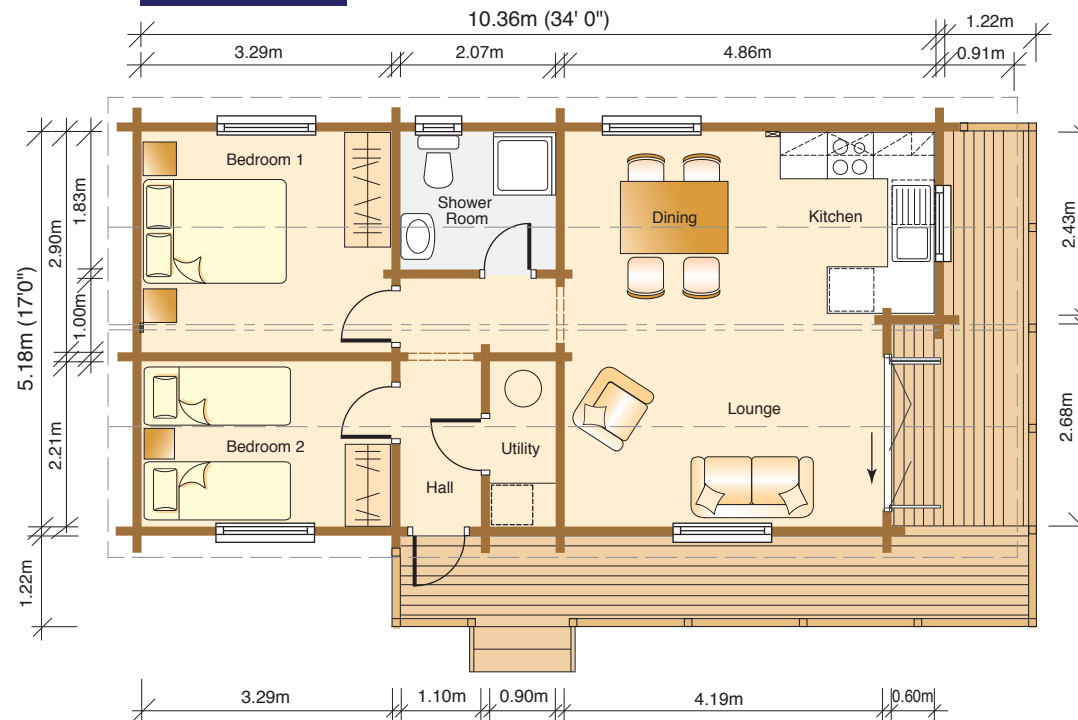
Utility Room: 7' 3" x 3' 0"

The various options shown here for furniture and fittings are for illustration purposes only



Elevations/Scale 1:200

Floor Plan/Scale 1:100



The Sherwood 2 bedrooms - 54.35m² Floor Area (585 sq.ft.)

Norwegian Log



Room Dimensions - Imperial measurements

Entrance Hall: 9' 1" x 3' 7"

Living Area: 10' 5"/13' 11" x 19' 6"

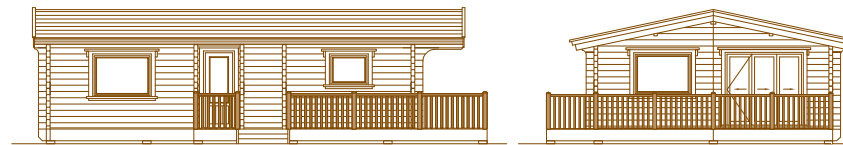
Bedroom 1: 12' 0" x 9' 1"

Bedroom 2: 10' 2" x 8' 4"

Bathroom: 7' 3" x 6' 4"

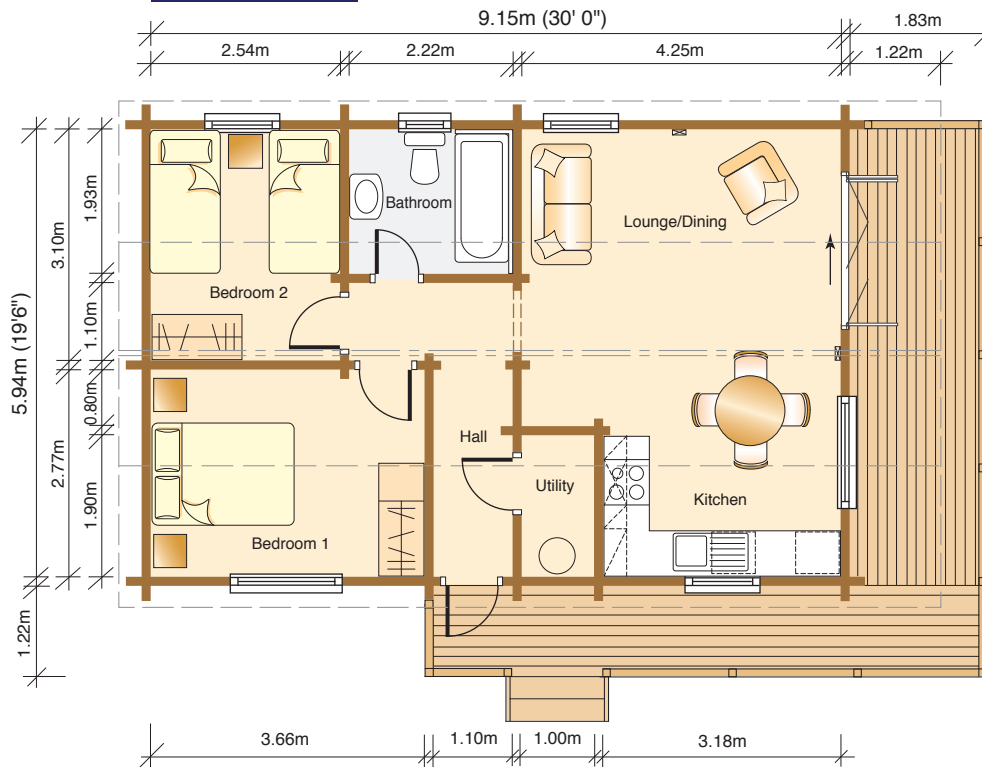
Utility Room: 6' 3" x 3' 3"

The various options shown here for furniture and fittings are for illustration purposes only



Elevations/Scale 1:200

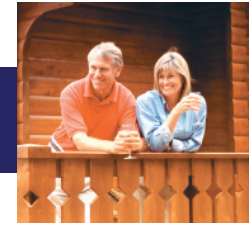
Floor Plan/Scale 1:100



Deluxe 6.8m (22' 3") external width version available. Please ask for details

The Alpine 2 bedrooms - 59.31m² Floor Area (638 sq.ft.)

Norwegian Log



Room Dimensions - Imperial measurements

Entrance Hall: 8' 9" x 3' 7"

Living Area:
13' 9"/16' 0" x 19' 6"

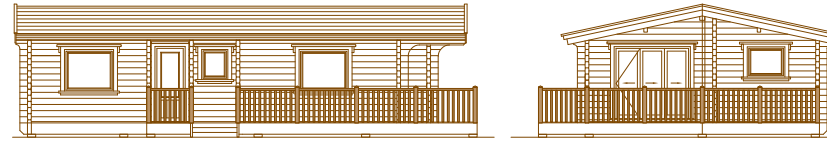
Bedroom 1: 10' 6" x 9' 11"

Bedroom 2: 9' 11" x 8' 9"

Bathroom: 7' 7" x 6' 6"

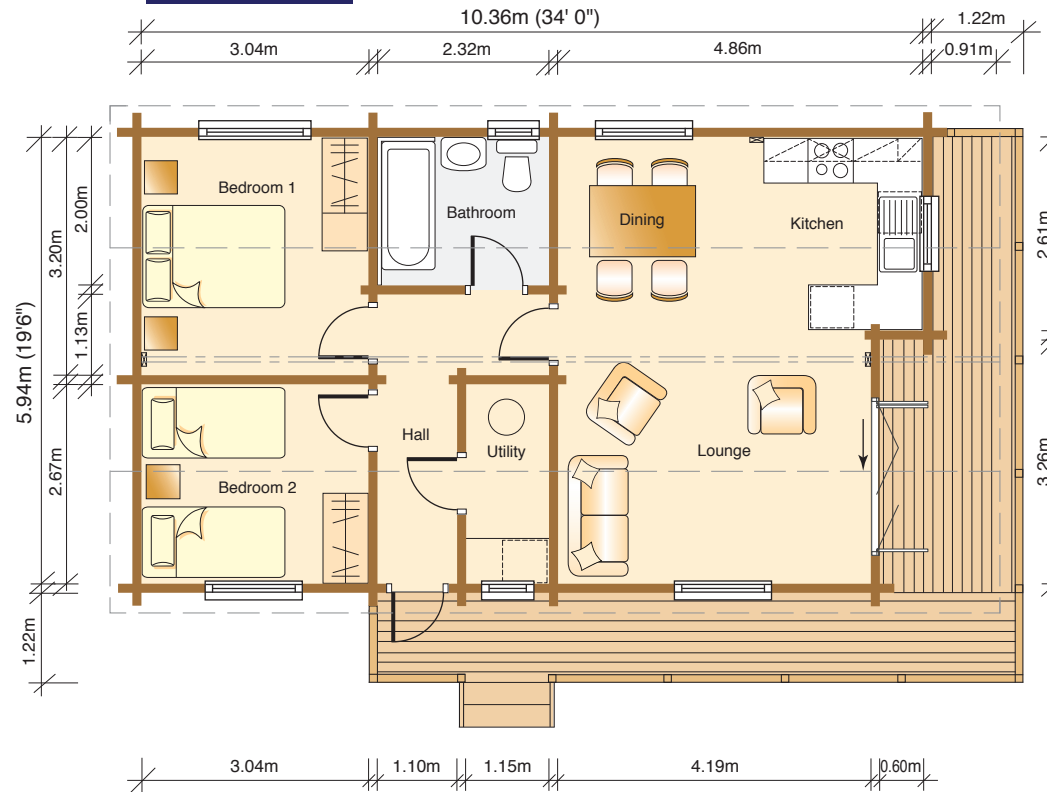
Utility Room: 8' 9" x 3' 9"

The various options shown here for furniture and fittings are for illustration purposes only



Elevations/Scale 1:200

Floor Plan/Scale 1:100



Deluxe 6.8m (22' 3") external width version available. Please ask for details



The Lomond 3 bedrooms - 66.65m² Floor Area (717 sq.ft.)



Norwegian Log

Room Dimensions - Imperial measurements

Hall: 7' 4" x 3' 3"

Living Area:
15' 6"/18' 8" x 19' 6"

Bedroom 1: 9' 3" x 9' 3"

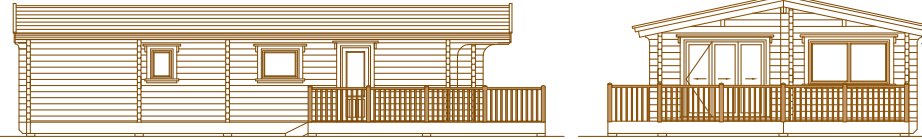
Ensuite Shower Room:
6' 0" x 5' 6"

Bedroom 2: 10' 0" x 9' 3"

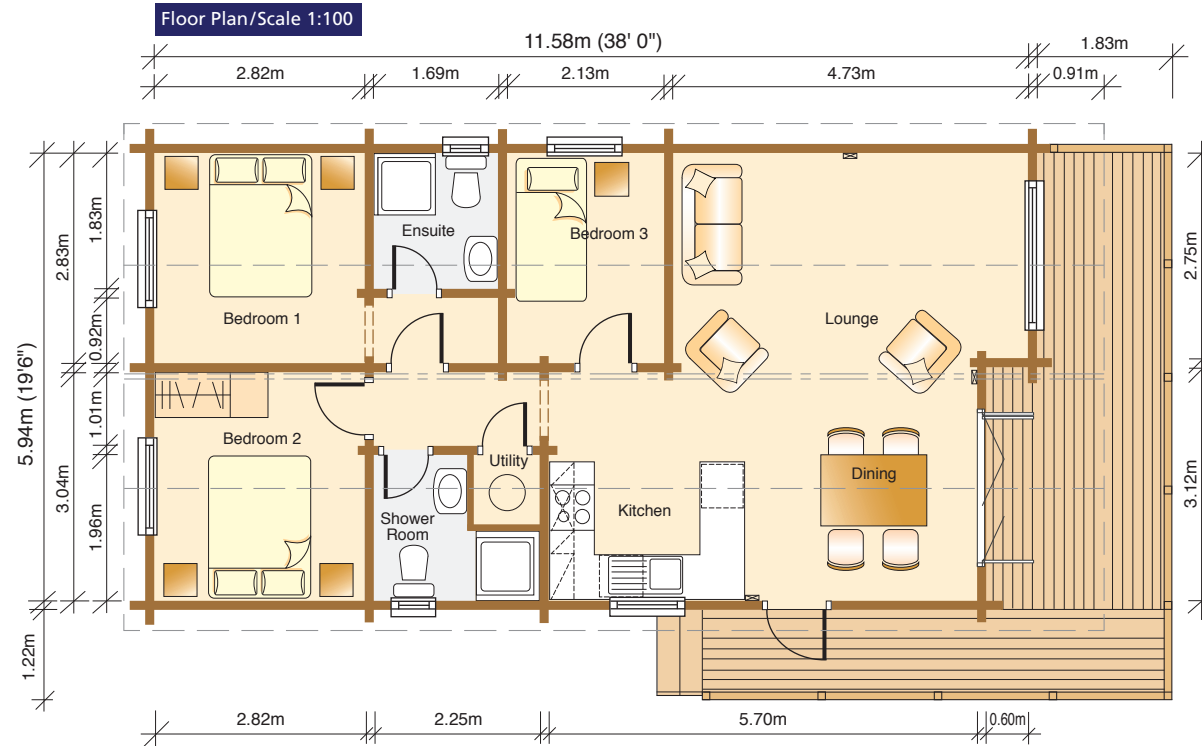
Bedroom 3: 9' 3" x 7' 0"

Shower Room:
4' 5"/7' 4" x 6' 5"

The various options shown here
for furniture and fittings are
for illustration purposes only



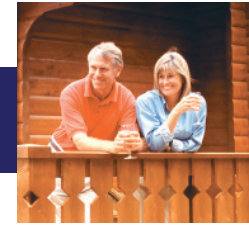
Elevations/Scale 1:200



Deluxe 6.8m (22' 3") external width version available. Please ask for details

The Malvern 2 bedrooms - 72.41m² Floor Area (779 sq.ft.)

Norwegian Log



Room Dimensions - Imperial measurements

Entrance Hall: 7' 3" x 3' 7"

Living Area: 19' 6" x 17' 9"

Bedroom 1: 12' 0" x 11' 0"

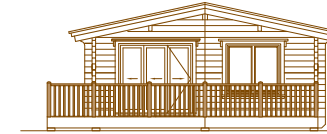
Ensuite Shower Room: 7' 3" x 7' 0"

Bedroom 2: 10' 10" x 8' 3"

Bathroom: 7' 4" x 7' 3"

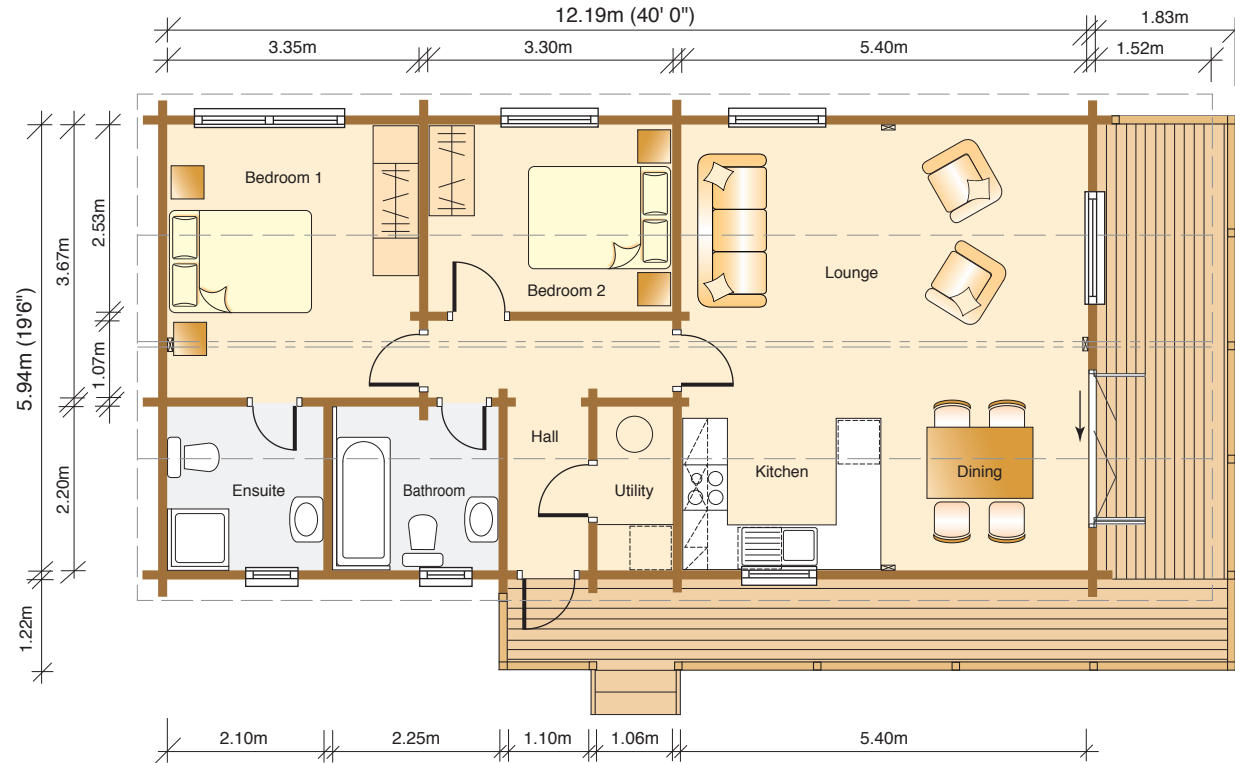
Utility Room: 7' 3" x 3' 5"

The various options shown here for furniture and fittings are for illustration purposes only



Elevations/Scale 1:200

Floor Plan/Scale 1:100



Deluxe 6.8m (22' 3") external width version available. Please ask for details

The Nordic 3 bedrooms - 79.66m² Floor Area (857 sq.ft.)



Norwegian Log

Room Dimensions - Imperial measurements

Entrance Hall: 6' 3" x 3' 7"

Living Area: 19' 6" x 18' 6"

Bedroom 1: 14' 0" x 9' 2"

Bedroom 2: 10' 1" x 10' 0"

Bedroom 3: 11' 0" x 9' 2"

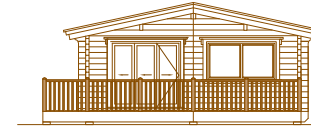
Bathroom: 7' 3" x 6' 3"

W/C: 6' 3" x 3' 7"

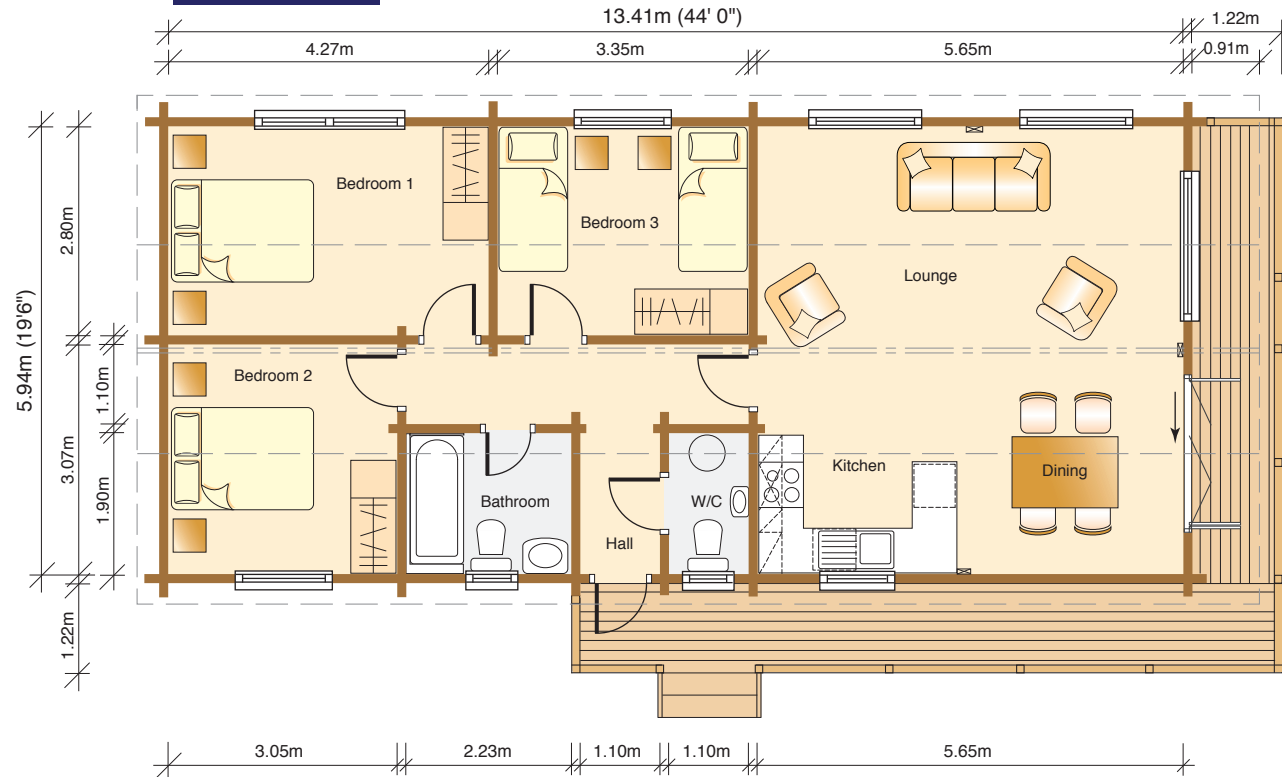
The various options shown here for furniture and fittings are for illustration purposes only



Elevations/Scale 1:200



Floor Plan/Scale 1:100

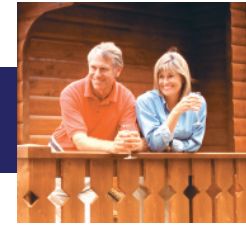


Deluxe 6.8m (22' 3") external width version available. Please ask for details



The Pennine 3 bedrooms - 88.09m² Floor Area (948 sq.ft.)

Norwegian Log



Room Dimensions - Imperial measurements

Entrance Hall: 10' 2" x 7' 3"

Living Area: 17' 8"/20' 0" x 19' 6"

Bedroom 1: 12' 0" x 11' 0"

Ensuite Shower Room: 7' 3" x 7' 0"

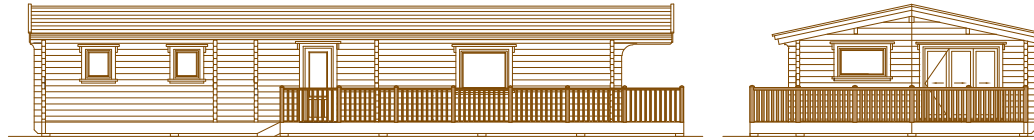
Bedroom 2: 10' 10" x 8' 3"

Bedroom 3: 12' 0" x 8' 5"

Bathroom: 7' 4" x 7' 3"

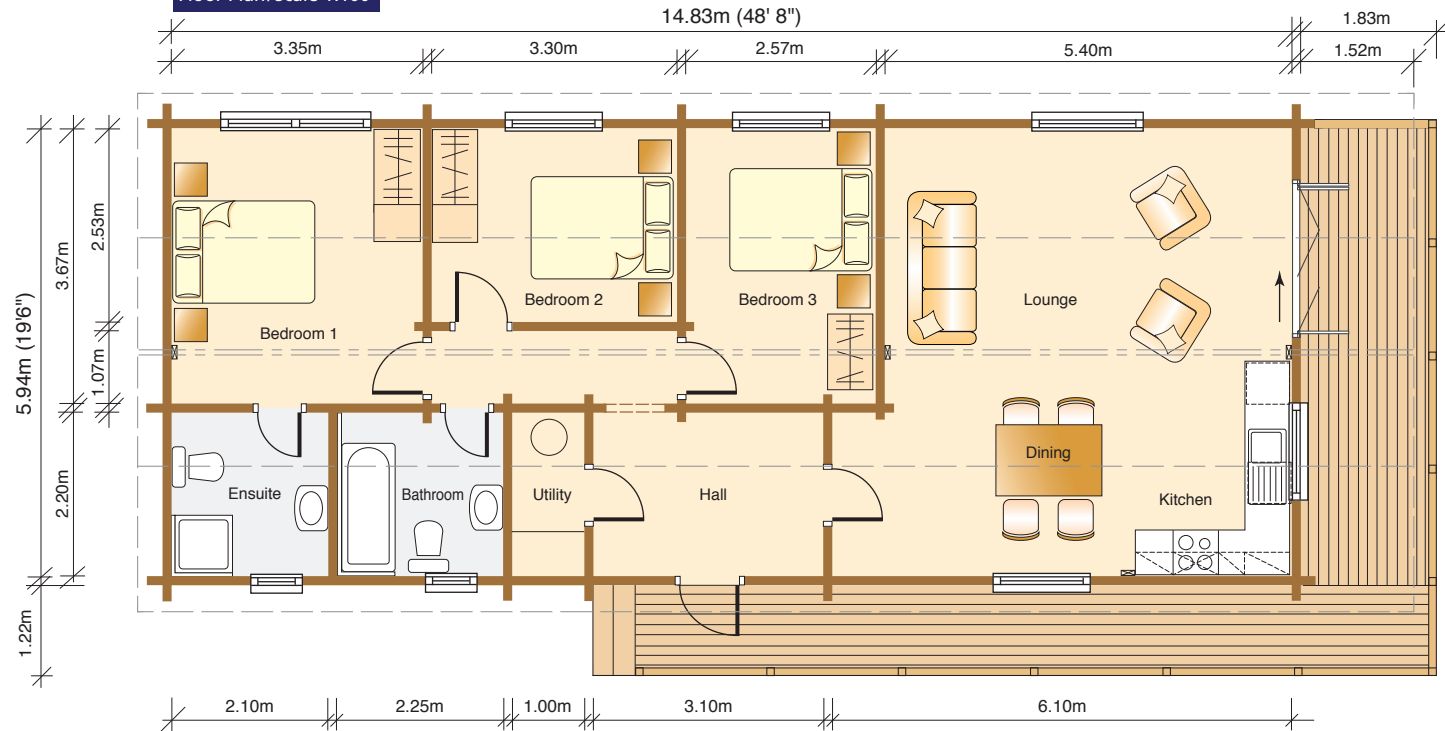
Utility Room: 7' 3" x 3' 3"

The various options shown here for furniture and fittings are for illustration purposes only



Elevations/Scale 1:200

Floor Plan/Scale 1:100



Deluxe 6.8m (22' 3") external width version available. Please ask for details



The Grampian 3 bedrooms - 94.15m² Floor Area (1013 sq.ft.)



Norwegian Log

Room Dimensions - Imperial measurements

Entrance Hall: 11' 0" x 6' 0"

Living Area:
16' 0" / 22' 3" x 19' 6"

Bedroom 1: 13' 0" x 13' 0"

Ensuite Bathroom:
9' 0" x 6' 3"

Bedroom 2: 12' 0" x 8' 2"

Bedroom 3: 10' 0" x 7' 2"

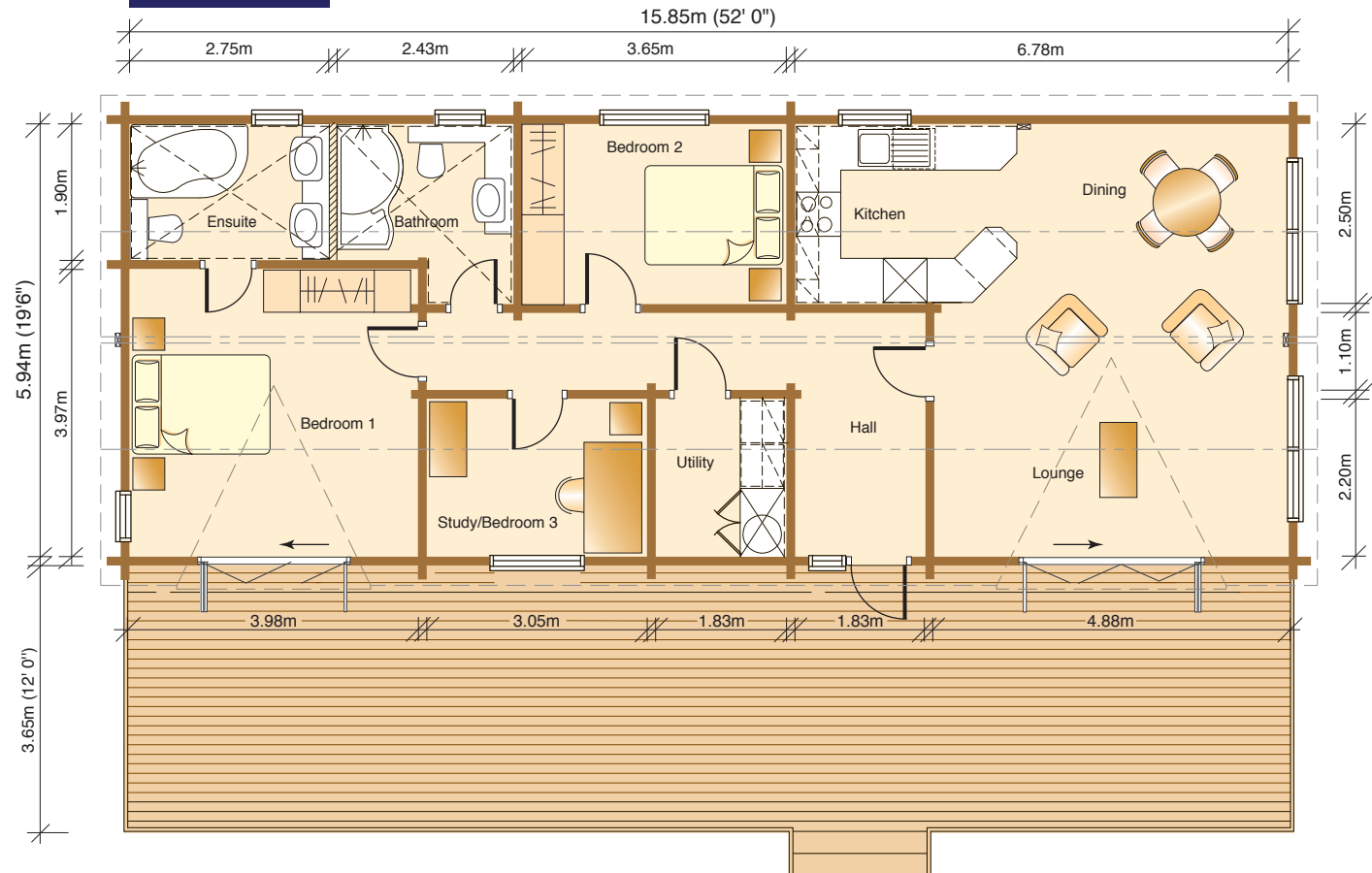
Bathroom: 8' 0" x 6' 3"

The various options shown here for furniture and fittings are for illustration purposes only



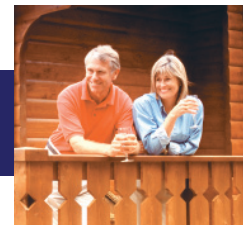
Elevations/Scale 1:200

Floor Plan/Scale 1:100



Deluxe 6.8m (22' 3") external width version available. Please ask for details

The Cairngorm 4 bedrooms - 98.60m² Floor Area (1061 sq.ft.)



Norwegian Log

Room Dimensions - Imperial measurements

Living Area:
17' 8" x 19' 6"

Bedroom 1:
13' 0"/11' 6" x 12' 1"

Ensuite Shower Room:
6' 10" x 6' 3"

Bedroom 2: 13' 1" x 7' 10"

Bedroom 3: 10' 10" x 7' 9"

Bedroom 4: 8' 10" x 7' 9"

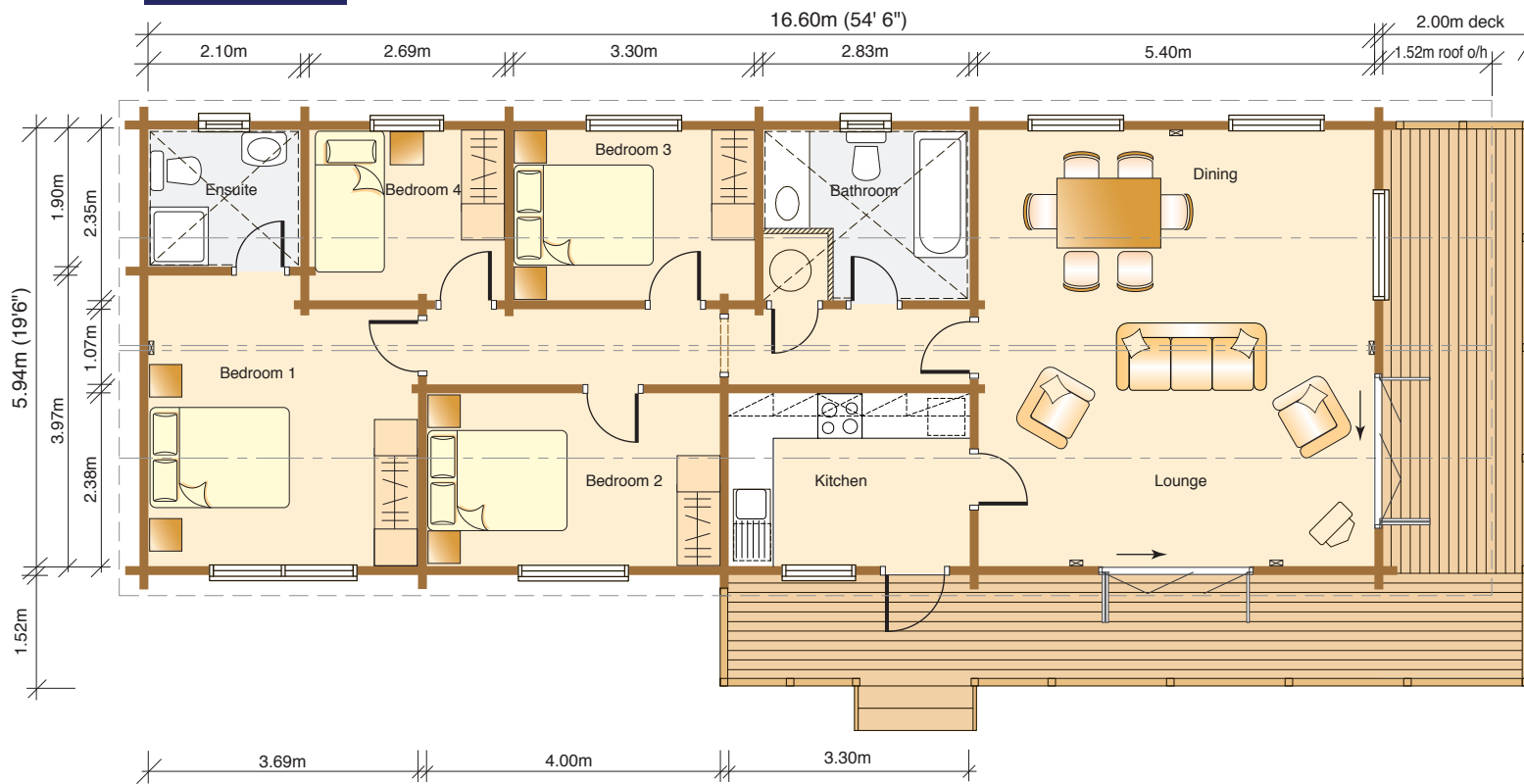
Bathroom: 9' 3" x 7' 9"

The various options shown here for furniture and fittings are for illustration purposes only



Elevations/Scale 1:200

Floor Plan/Scale 1:100



Deluxe 6.8m (22' 3") external width version available. Please ask for details

The New Highland 3 bedrooms - 98.72m² Floor Area (1063 sq.ft.)



Norwegian Log

Room Dimensions - Imperial measurements

Entrance Hall: 11' 7" x 7' 0"

Living Area: 19' 6" x 18' 9"

Bedroom 1: 14' 0" x 12' 3"

Ensuite Bathroom:
7' 6" x 7' 0"

Bedroom 2: 12' 3" x 9' 3"

Bedroom 3: 11' 9" x 8' 5"

Bathroom: 7' 6" x 7' 0"

Utility Room: 7' 0" x 6' 6"

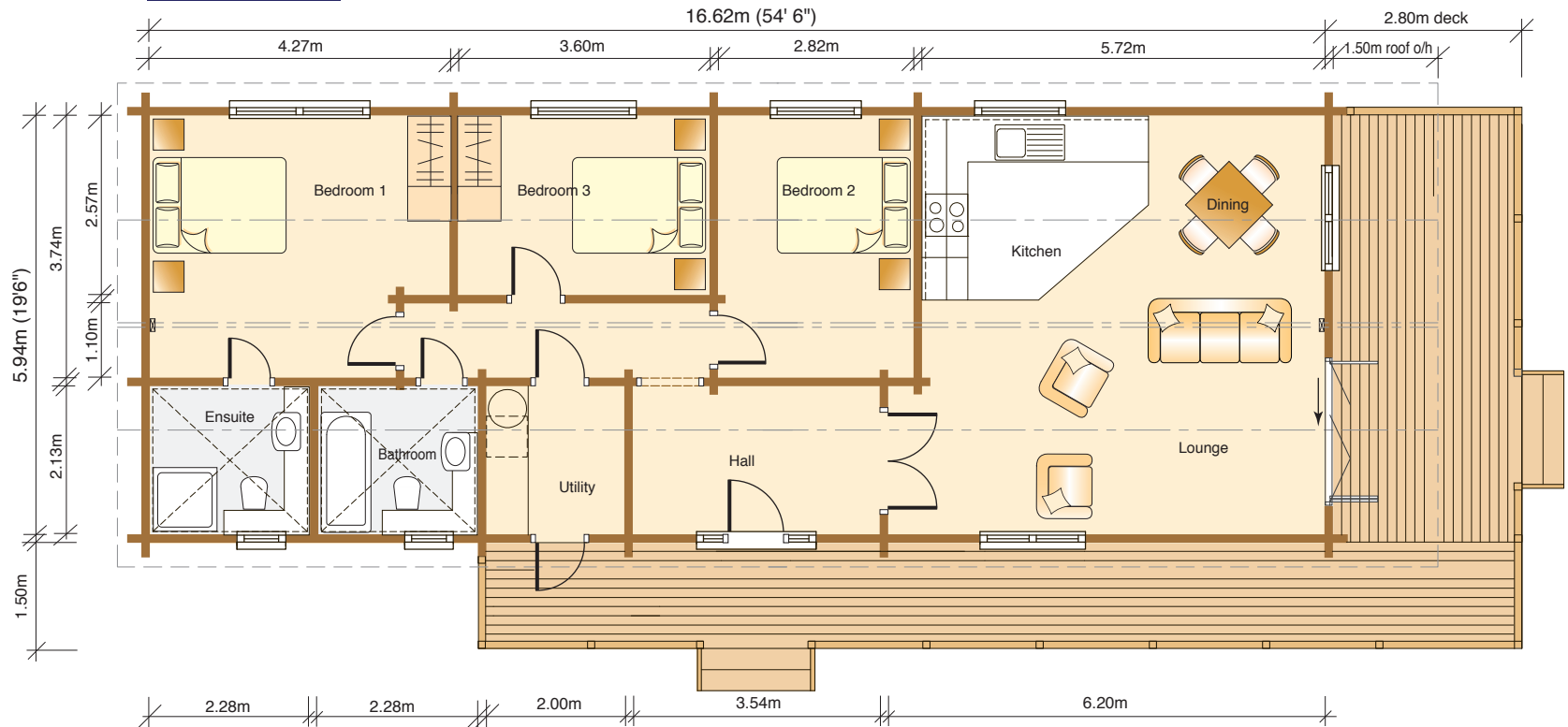
The various options shown here for furniture and fittings are for illustration purposes only



Elevations/Scale 1:200



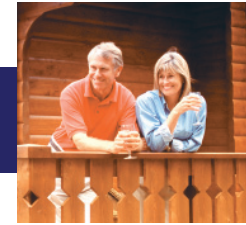
Floor Plan/Scale 1:100



Deluxe 6.8m (22' 3") external width version available. Please ask for details

The Wicklow 3 bedrooms - 101.16m² Floor Area (1089 sq.ft.)

Norwegian Log



Room Dimensions - Imperial measurements

Entrance Hall: 10' 10" x 7' 3"

Lounge: 13' 1" x 19' 6"

Dining Room: 15' 1" x 10' 10"

Kitchen: 10' 0" x 8' 5"

Bedroom 1: 12' 3" x 12' 0"

Ensuite Shower Room: 7' 8" x 7' 0"

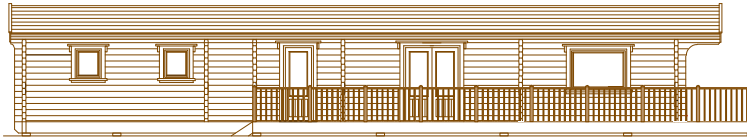
Bedroom 2: 11' 3" x 8' 5"

Bedroom 3: 8' 6" x 8' 5"

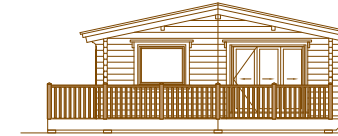
Bathroom: 7' 7" x 7' 0"

Utility Room: 7' 0" x 3' 11"

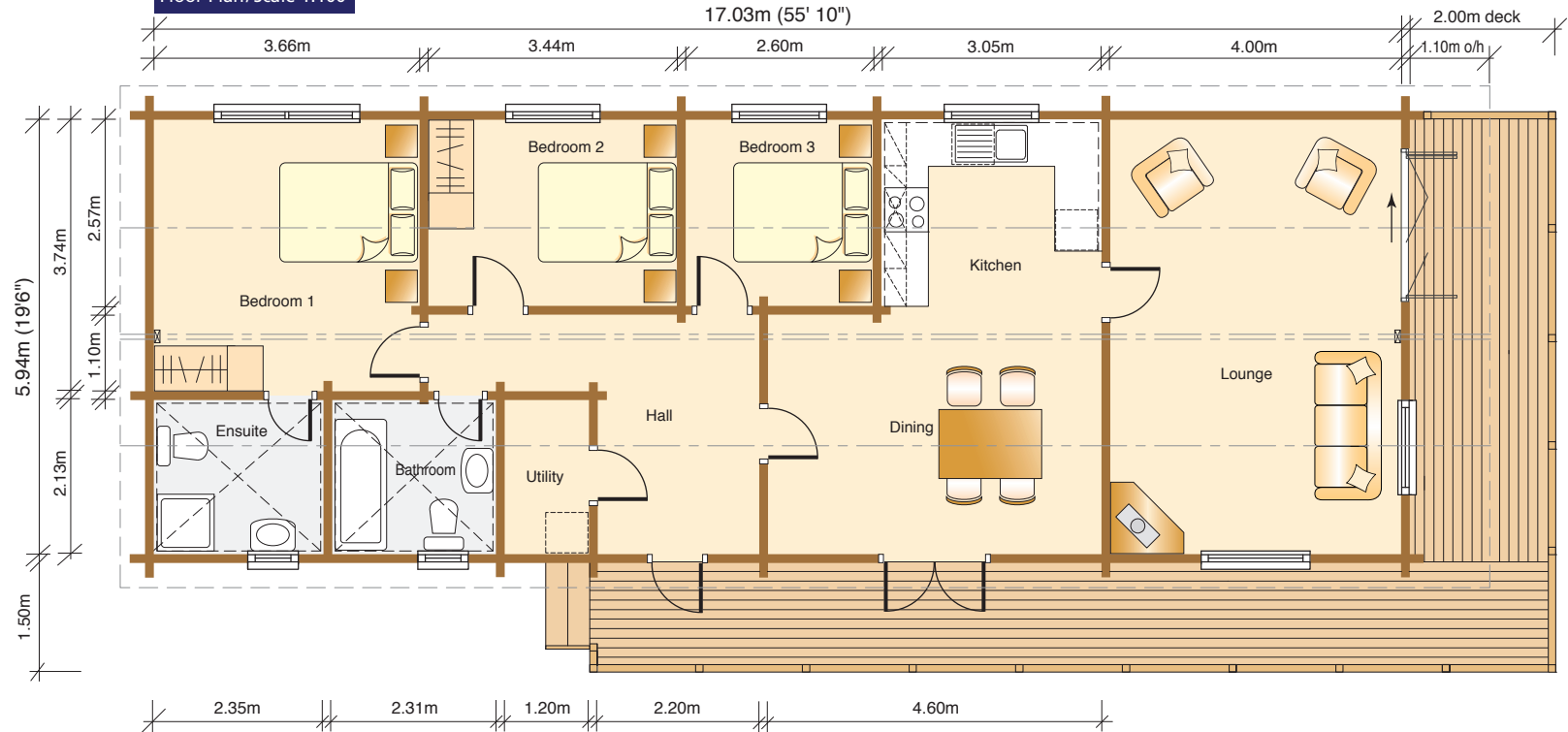
The various options shown here for furniture and fittings are for illustration purposes only



Elevations/Scale 1:200



Floor Plan/Scale 1:100



Deluxe 6.8m (22' 3") external width version available. Please ask for details



The Mendip 3 bedrooms - 128.18m² Floor Area (1380 sq.ft.)



Norwegian Log

Room Dimensions - Imperial measurements

Lounge: 21' 2" x 14' 1"

Dining Room: 14' 4" x 9' 11"

Kitchen: 14' 4" x 11' 0"

Utility Room: 11' 1" x 6' 11"

Bedroom 1: 14' 3" x 12' 0"

Dressing Room: 7' 10" x 6' 11"

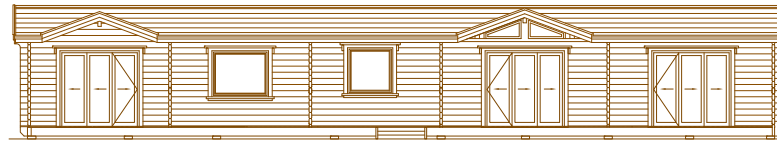
Shower Room: 6' 0" x 6' 11"

Bedroom 2: 12' 0" x 10' 0"

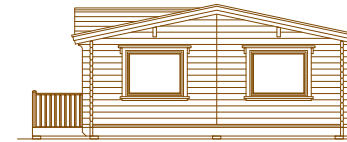
Bedroom 3: 11' 1" x 10' 0"

Bathroom: 9' 10" x 6' 11"

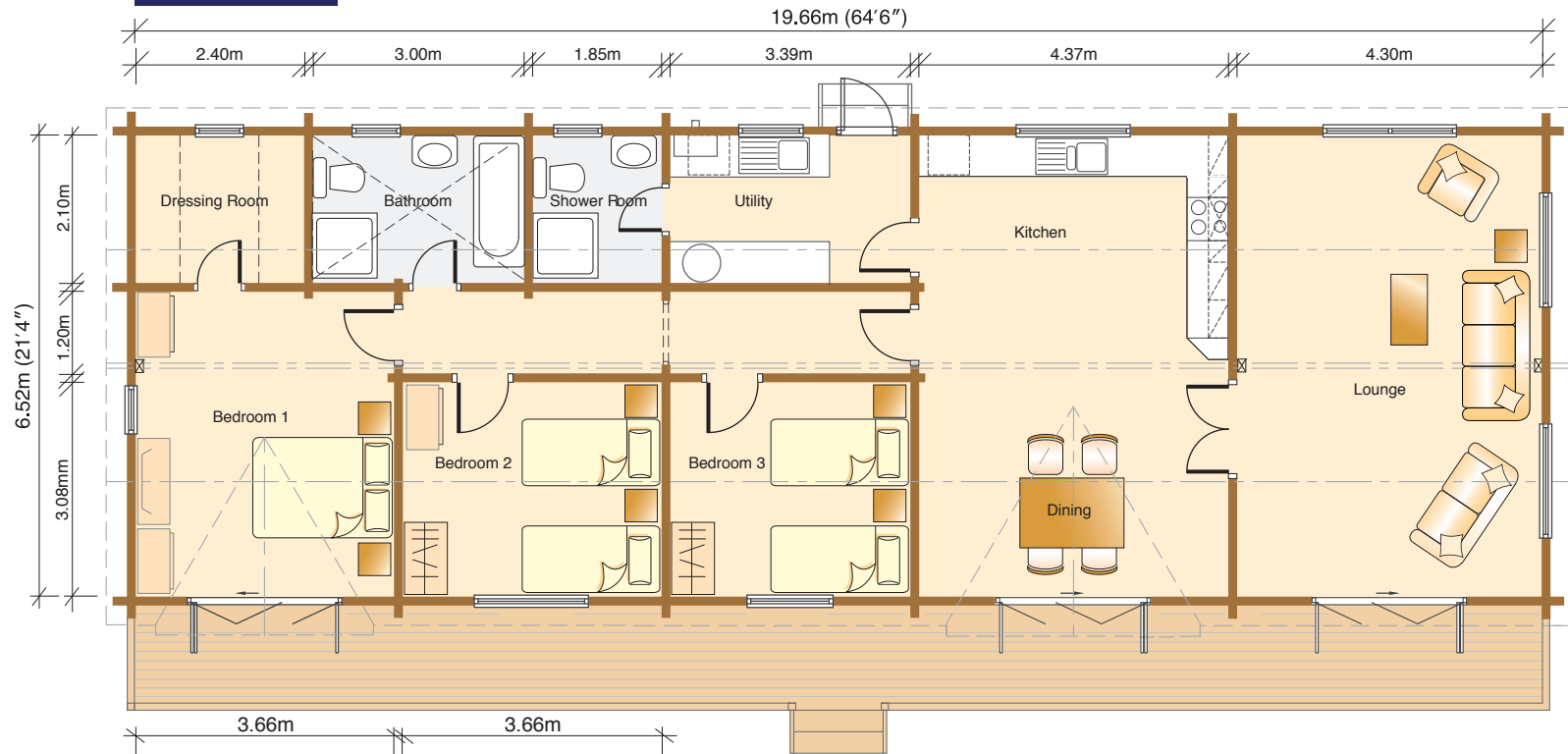
The various options shown here for furniture and fittings are for illustration purposes only



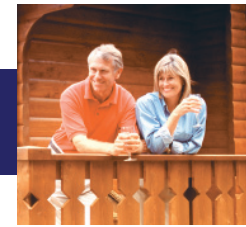
Elevations/Scale 1:200



Floor Plan/Scale 1:100



The Cambrian 4 bedrooms - 128.18m² Floor Area (1380 sq.ft.)



Norwegian Log

Room Dimensions - Imperial measurements

Entrance Hall: 9' 11" x 5' 0"

Lounge: 21' 2" x 14' 1"

Dining Room: 11' 0" x 9' 11"

Kitchen: 14' 4" x 11' 0"

Utility Room: 9' 0" x 6' 11"

Bedroom 1: 14' 3" x 12' 0"

Ensuite Shower Room: 7' 10" x 6' 11"

Bedroom 2: 10' 8" x 10' 0"

Bedroom 3: 10' 8" x 10' 0"

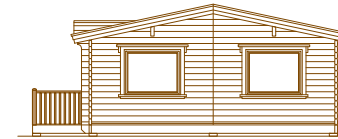
Bedroom 4: 10' 0" x 6' 11"

Bathroom: 7' 10" x 6' 11"

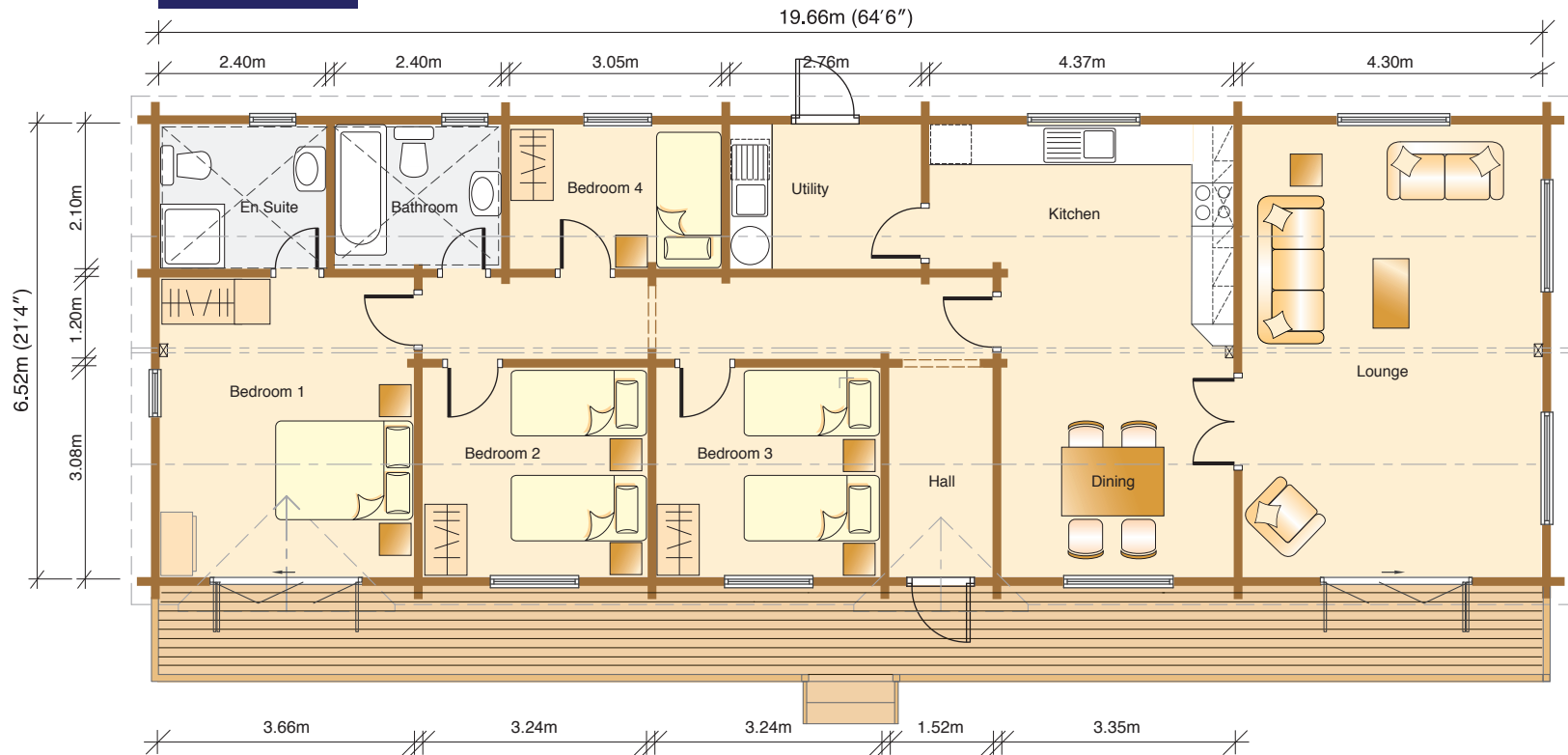
The various options shown here for furniture and fittings are for illustration purposes only



Elevations/Scale 1:200



Floor Plan/Scale 1:100





Felindre Lodges, Pembrokeshire

Norwegian Log

Norwegian Log Buildings

230 London Road, Reading, RG6 1AH
Telephone 0118 966 9236 Fax 0118 966 0456

Email: sales@norwegianlog.co.uk

Website: www.norwegianlog.co.uk