

The Cambrian 4 bedrooms - 127m² Floor Area (1366 sq.ft.)



Norwegian Log

Room Dimensions - Imperial measurements

Entrance Hall: 9' 11" x 5' 0"

Lounge: 21' 2" x 14' 1"

Dining Room: 11' 0" x 9' 11"

Kitchen: 14' 4" x 11' 0"

Utility Room: 9' 0" x 6' 11"

Bedroom 1: 14' 1" x 12' 0"

Ensuite Shower Room: 7' 10" x 6' 11"

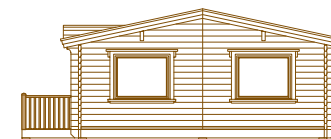
Bedroom 2: 10' 8" x 9' 11"

Bedroom 3: 10' 8" x 9' 11"

Bedroom 4: 10' 0" x 6' 11"

Bathroom: 7' 10" x 6' 11"

The various options shown here for furniture and fittings are for illustration purposes only



Elevations/Scale 1:200

Floor Plan/Scale 1:100

