

The Mendip 3 bedrooms - 127m² Floor Area (1366 sq.ft.)

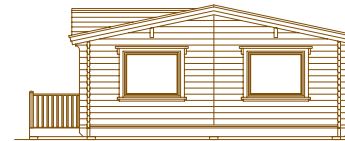
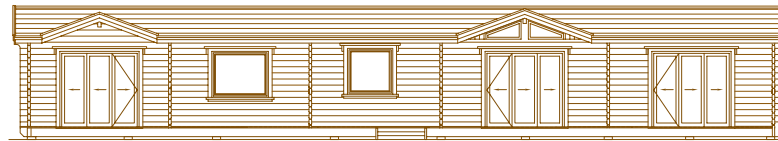


Norwegian Log

Room Dimensions - Imperial measurements

- Lounge: 21' 2" x 14' 1"
- Dining Room: 14' 4" x 9' 11"
- Kitchen: 14' 4" x 11' 0"
- Utility Room: 11' 1" x 6' 11"
- Bedroom 1: 14' 1" x 12' 0"
- Dressing Room: 7' 10" x 6' 11"
- Shower Room: 6' 0" x 6' 11"
- Bedroom 2: 12' 0" x 9' 11"
- Bedroom 3: 11' 1" x 9' 11"
- Bathroom: 9' 10" x 6' 11"

The various options shown here for furniture and fittings are for illustration purposes only



Elevations/Scale 1:200

Floor Plan/Scale 1:100

