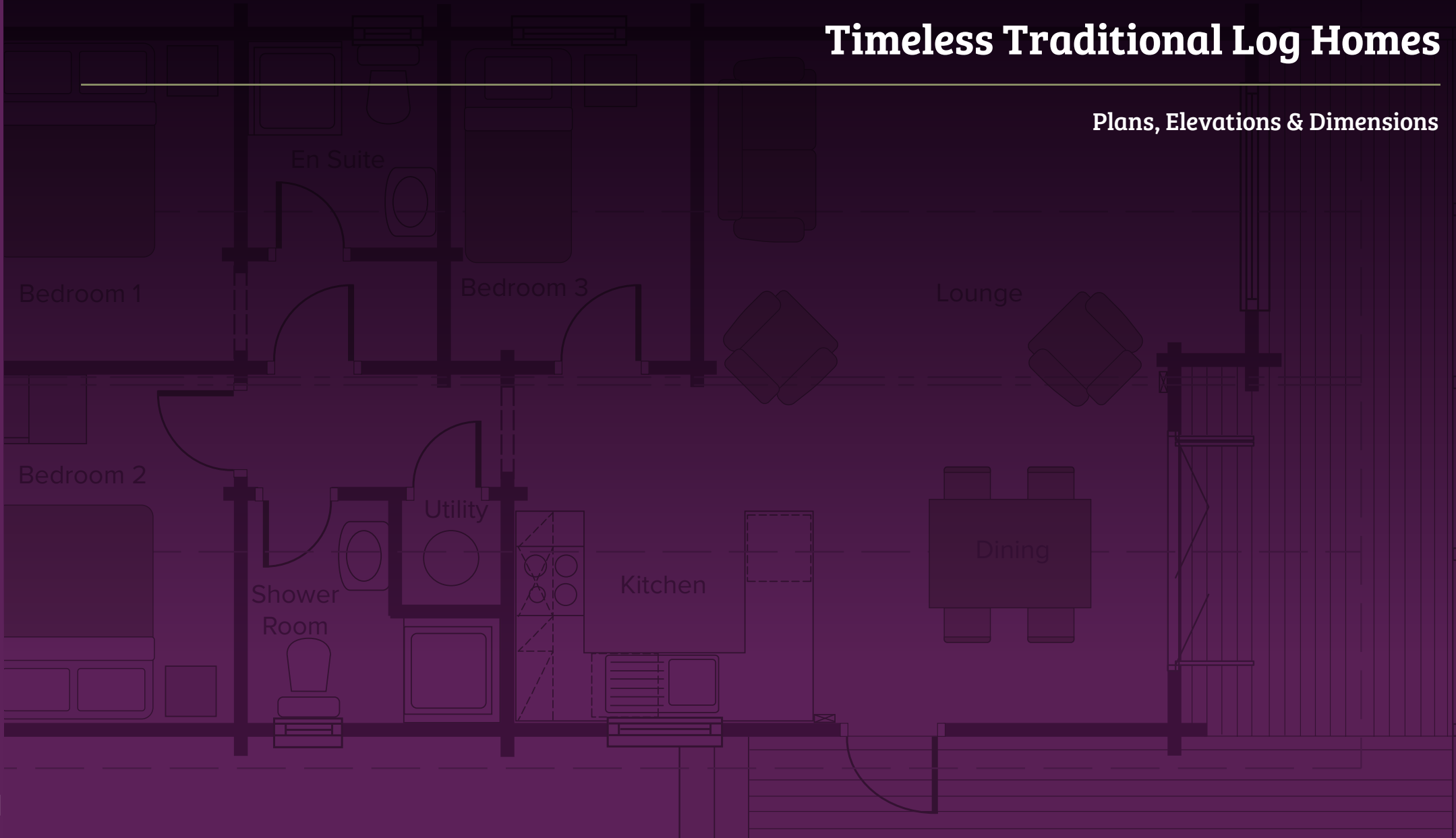


# Timeless Traditional Log Homes

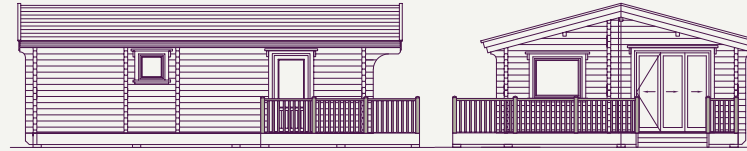
Plans, Elevations & Dimensions



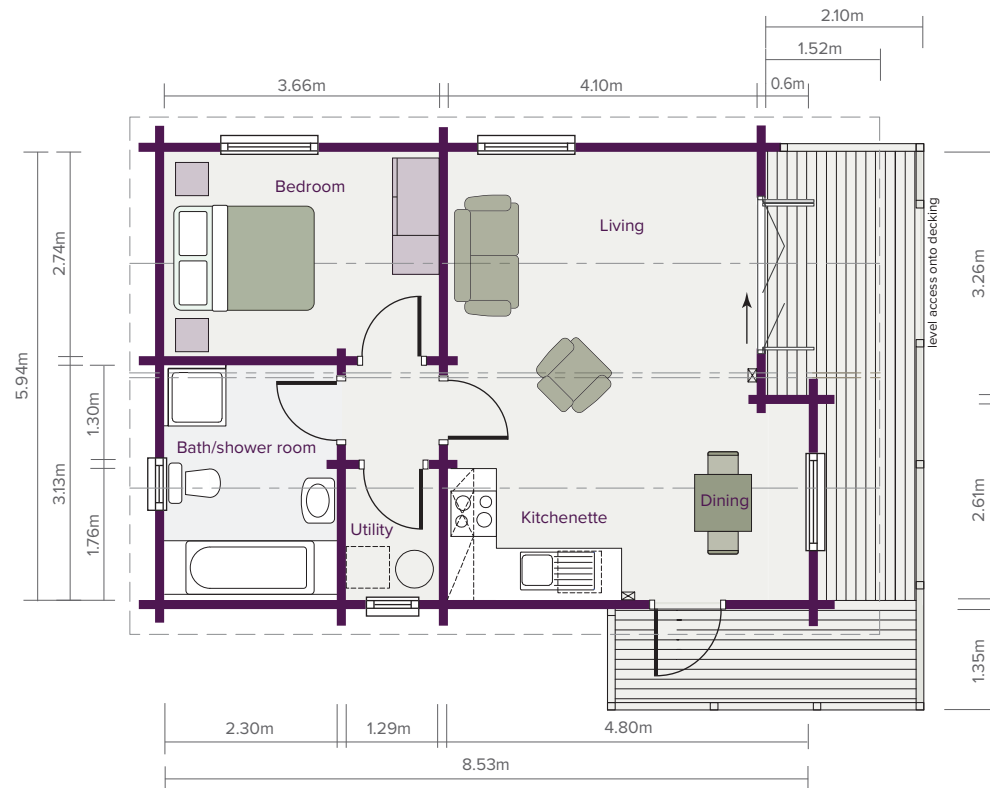
# Tirol Annexe

1 Bedroom

48.44m<sup>2</sup> (521 sq ft)



ELEVATIONS SCALE 1:200



FLOOR PLAN SCALE 1:100

## ROOM DIMENSIONS

Living Area 4.10m / 4.80m x 5.94m  
(13' 5" / 15' 9" x 19' 5")

Bedroom 3.66m x 2.74m (12' 0" x 9' 0")  
Bathroom 3.13m x 2.30m (10' 3" x 7' 6")

Utility Room 1.76m x 1.29m (5' 9" x 4' 2")

# Alpine Compact

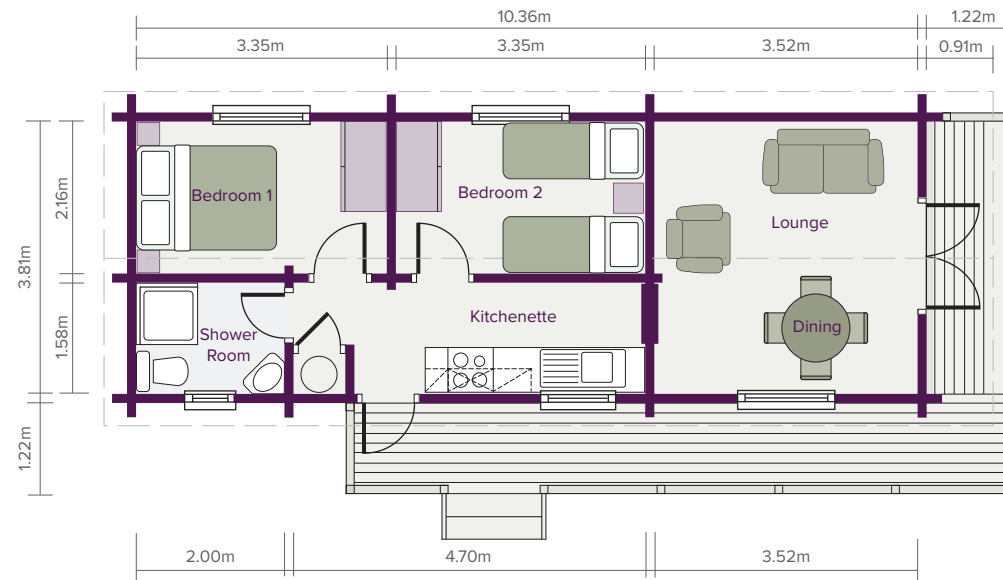
2 Bedroom

39.47m<sup>2</sup> (425 sq ft)



ELEVATIONS SCALE 1:200

FLOOR PLAN SCALE 1:100



## ROOM DIMENSIONS

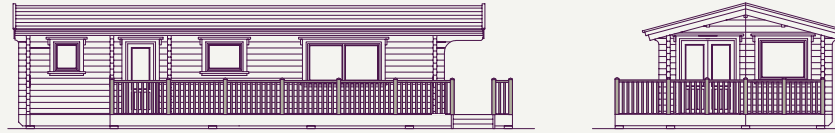
Lounge	3.81m x 3.52m	(12' 6" x 11' 6")
Kitchen	4.01m x 1.58m	(13' 2" x 5' 2")
Bedroom 1	3.35m x 2.16m	(11' 0" x 7' 1")

Bedroom 2	3.35m x 2.16m	(11' 0" x 7' 1")
Shower Room	2.00m x 1.58m	(6' 6" x 5' 2")

# Cresta

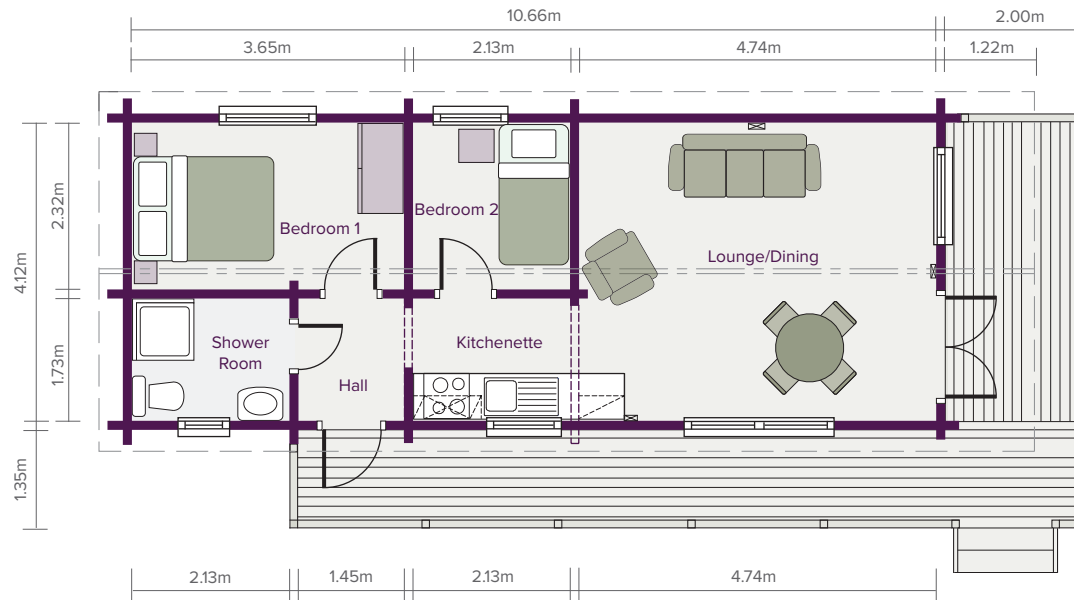
2 Bedroom

43.92m<sup>2</sup> (473 sq ft)



ELEVATIONS SCALE 1:200

FLOOR PLAN SCALE 1:100



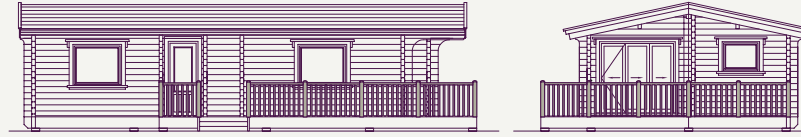
## ROOM DIMENSIONS

Entrance Hall	1.73m x 1.45m	(5' 8" x 4' 9")	Bedroom 1	3.65m x 2.32m	(12' 0" x 7' 7")
Lounge	4.74m x 4.12m	(15' 6" x 13' 6")	Bedroom 2	2.32m x 2.13m	(7' 7" x 7' 0")
Kitchen	2.13m x 1.73m	(7' 0" x 5' 8")	Shower Room	2.13m x 1.73m	(7' 0" x 5' 8")

# Brecon

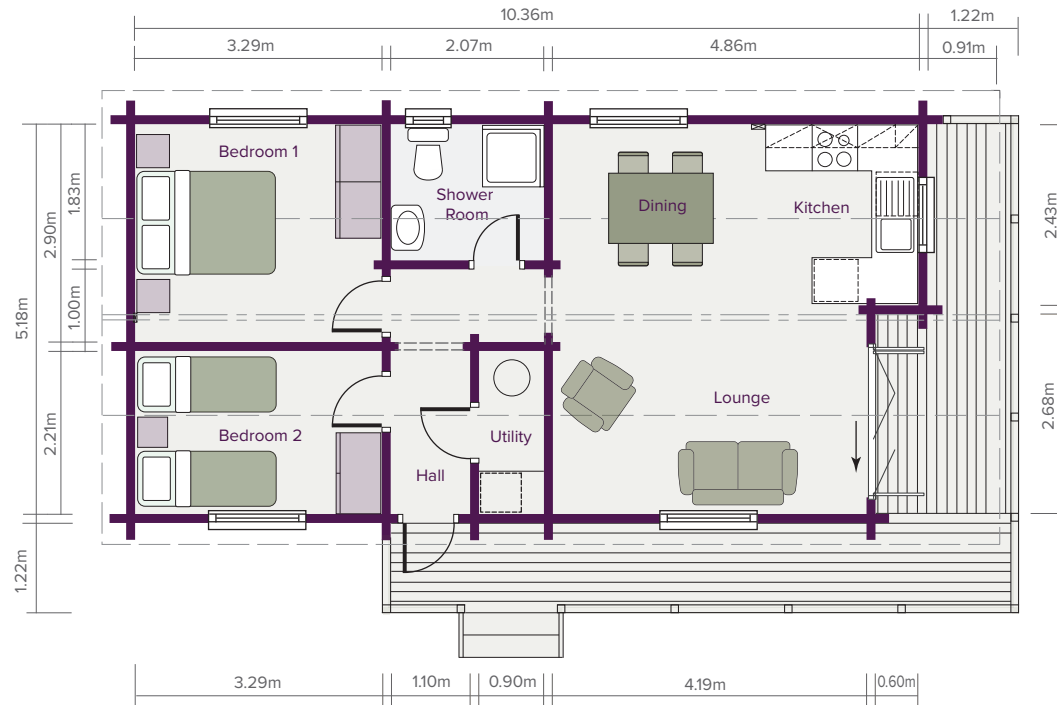
2 Bedroom

51.82m<sup>2</sup> (558 sq ft)



ELEVATIONS SCALE 1:200

FLOOR PLAN SCALE 1:100



## ROOM DIMENSIONS

Living Area 4.19m / 4.86m x 5.18m  
(13' 9" / 16' 0" x 17' 0")

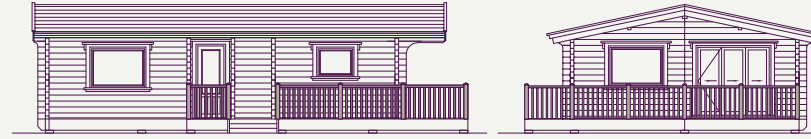
Entrance Hall 2.21m x 1.10m (7' 3" x 3' 7")  
Bedroom 1 3.29m x 2.90m (10' 9" x 9' 6")  
Bedroom 2 3.29m x 2.21m (10' 9" x 7' 3")

Shower Room 2.07m x 1.83m (6' 9" x 6' 0")  
Utility Room 2.21m x 0.90m (7' 3" x 3' 0")

# Sherwood

2 Bedroom

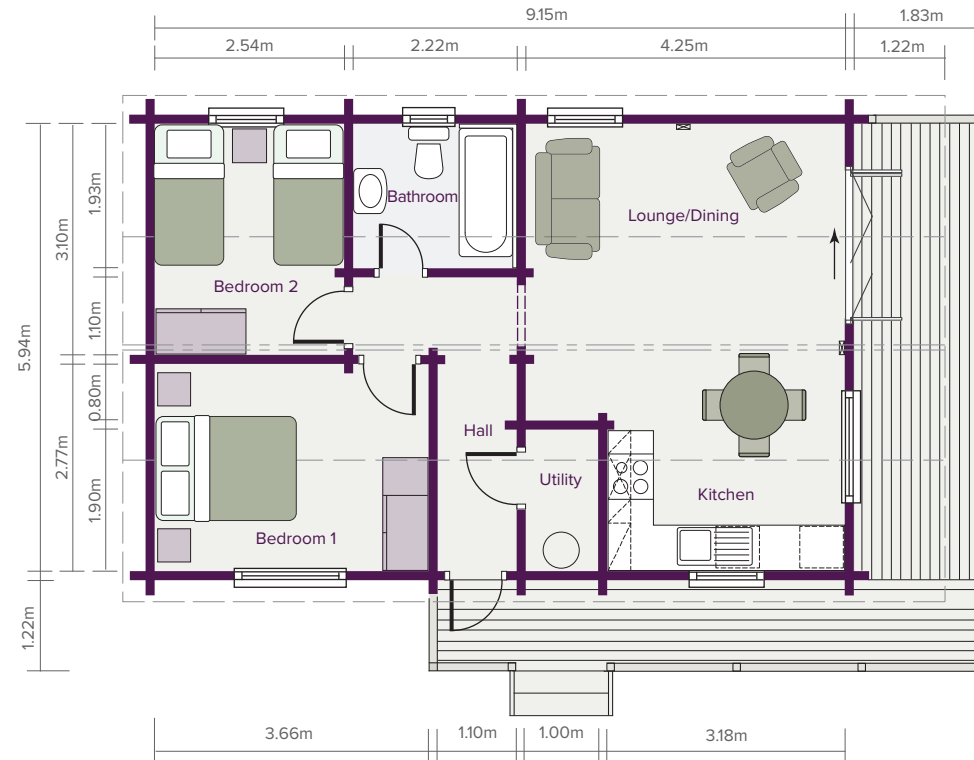
54.35m<sup>2</sup> (585 sq ft)



ELEVATIONS SCALE 1:200

Deluxe 6.8m (22' 3") external width version available. Please ask for details.

FLOOR PLAN SCALE 1:100



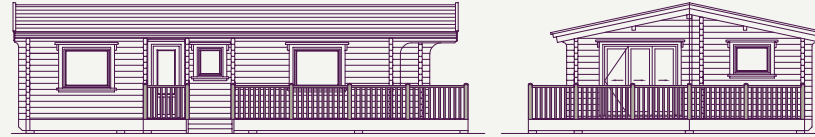
## ROOM DIMENSIONS

Living Area	3.18m / 4.25m x 5.94m (10' 5" / 13' 11" x 19' 6")	Entrance Hall	2.77m x 1.10m (9' 1" x 3' 7")	Bathroom	2.22m x 1.93m (7' 3" x 6' 4")
		Bedroom 1	3.66m x 2.77m (12' 0" x 9' 1")	Utility Room	1.90m x 1.00m (6' 3" x 3' 3")
		Bedroom 2	3.10m x 2.54m (10' 2" x 8' 4")		

# Alpine

2 Bedroom

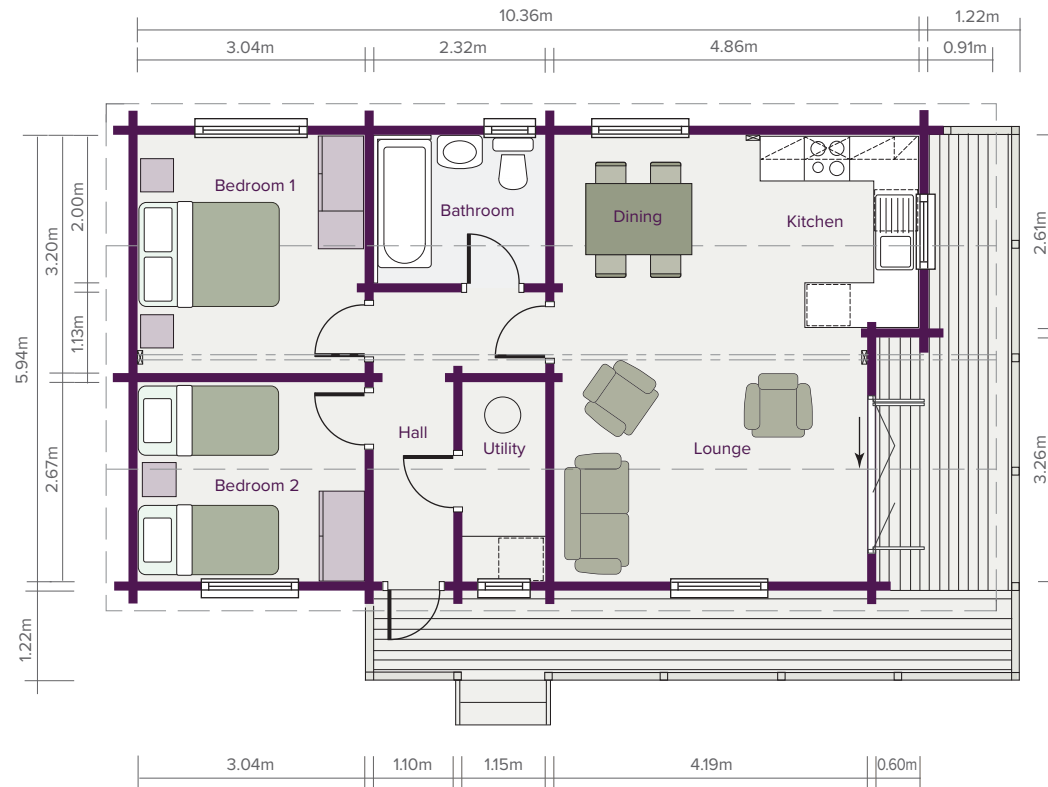
59.31m<sup>2</sup> (638 sq ft)



ELEVATIONS SCALE 1:200

Deluxe 6.8m (22' 3") external width version available. Please ask for details.

FLOOR PLAN SCALE 1:100



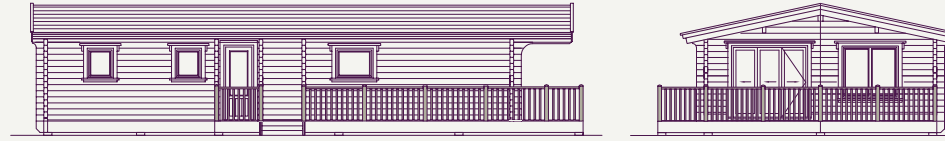
## ROOM DIMENSIONS

Living Area	4.19m / 4.86m x 5.94m (13' 9" / 16' 0" x 19' 6")	Entrance Hall	2.67m x 1.10m (8' 9" x 3' 7")	Bathroom	2.32m x 2.00m (7' 7" x 6' 6")
		Bedroom 1	3.20m x 3.04m (10' 5" x 9' 10")	Utility Room	2.67m x 1.15m (8' 9" x 3' 9")
		Bedroom 2	2.67m x 3.04m (8' 8" x 9' 10")		

# Malvern

2 Bedroom

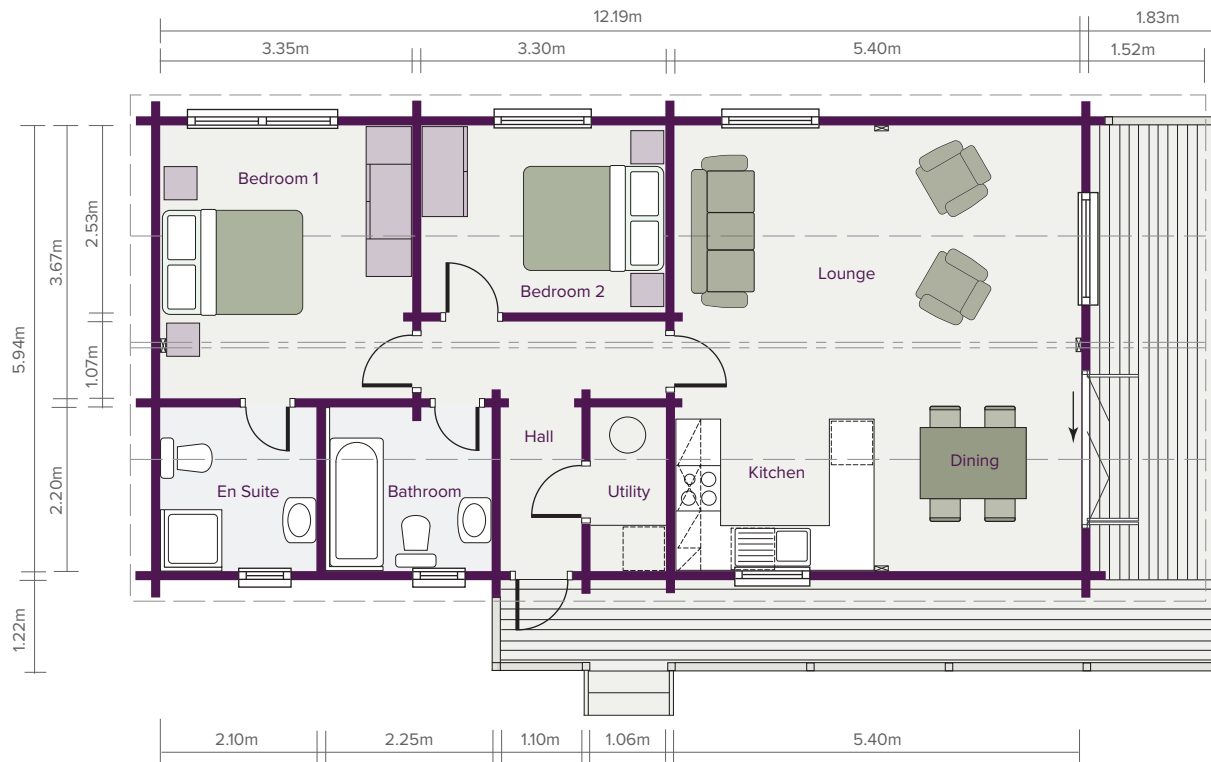
72.41m<sup>2</sup> (779 sq ft)



ELEVATIONS SCALE 1:200

Deluxe 6.8m (22' 3") external width version available. Please ask for details.

FLOOR PLAN SCALE 1:100



## ROOM DIMENSIONS

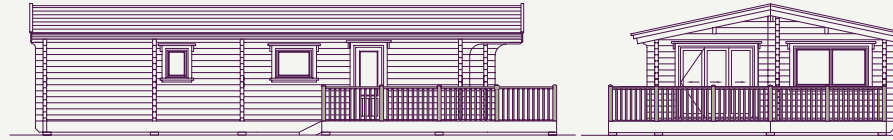
Entrance Hall	2.20m x 1.10m	(7' 3" x 3' 7")	En Suite	2.20m x 2.10m	(7' 3" x 7' 0")	Utility Room	2.20m x 1.06m	(7' 3" x 3' 5")
Living Area	5.94m x 5.40m	(19' 6" x 17' 9")	Bedroom 2	3.30m x 2.53m	(10' 10" x 8' 3")			
Bedroom 1	3.67m x 3.35m	(12' 0" x 11' 0")	Bathroom	2.25m x 2.20m	(7' 4" x 7' 3")			



# Lomond

3 Bedroom

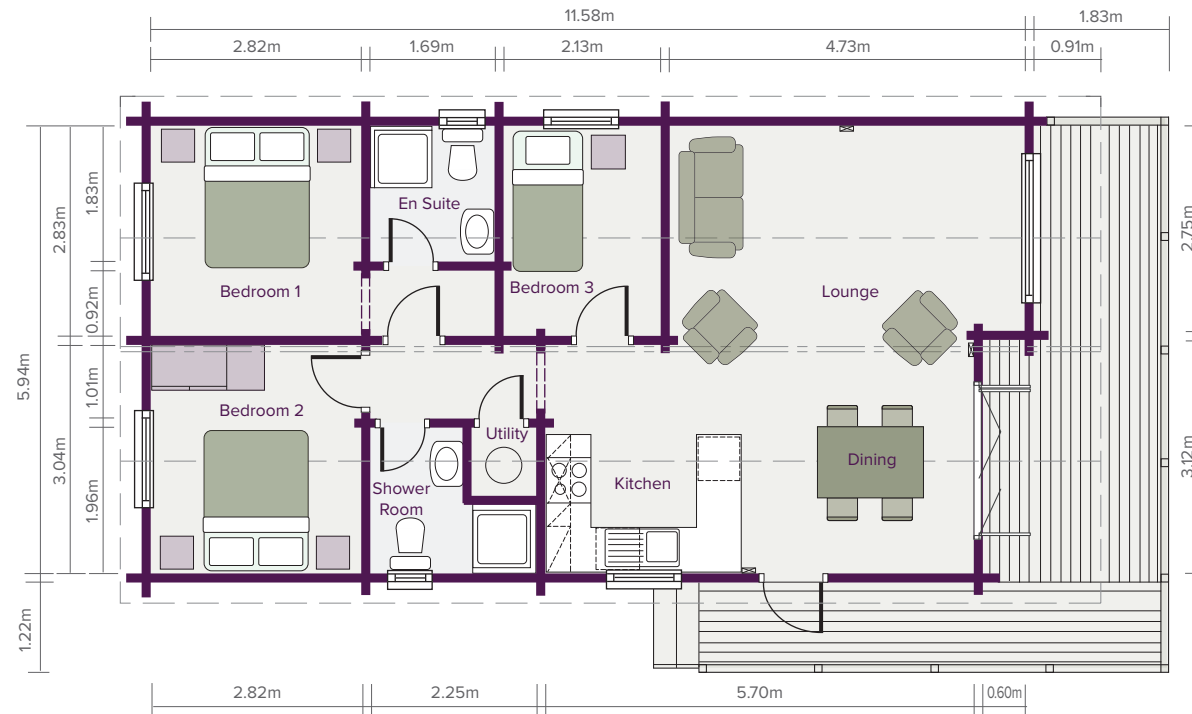
66.65m<sup>2</sup> (717 sq ft)



ELEVATIONS SCALE 1:200

Deluxe 6.8m (22' 3") external width version available. Please ask for details.

FLOOR PLAN SCALE 1:100



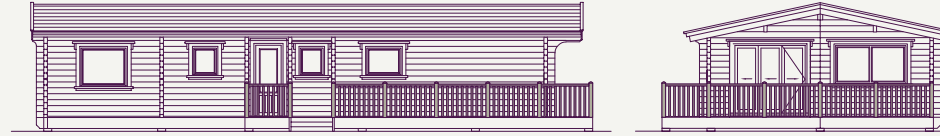
## ROOM DIMENSIONS

Living Area	4.73m / 5.70m x 5.94m (15' 6" / 18' 8" x 19' 6")	Hall	2.25m x 1.01m (7' 4" x 3' 3")	Bedroom 3	2.83m x 2.13m (9' 3" x 7' 0")
Shower Room	1.34m / 2.25m x 1.96m (4' 5" / 7' 4" x 6' 5")	Bedroom 1	2.83m x 2.82m (9' 3" x 9' 3")		
		En Suite	1.83m x 1.69m (6' 0" x 5' 6")		
		Bedroom 2	3.04m x 2.82m (10' 0" x 9' 3")		

# Nordic

3 Bedroom

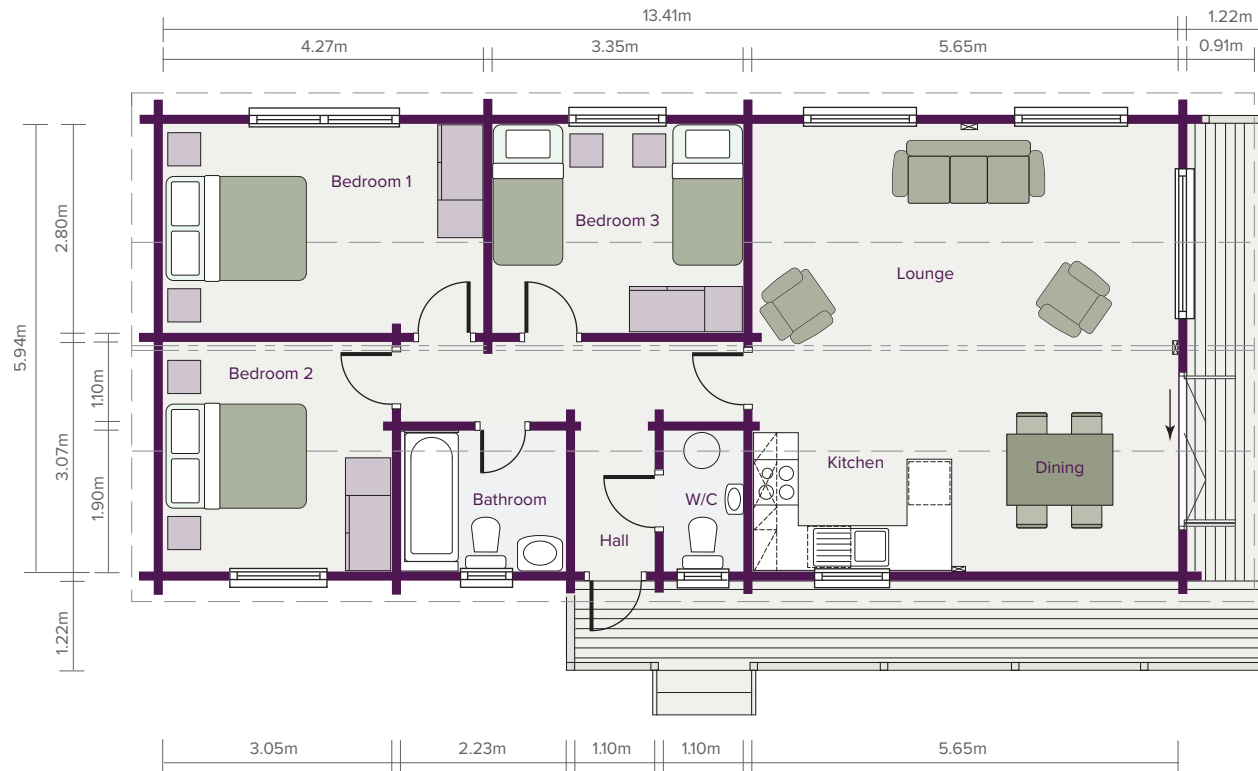
79.66m<sup>2</sup> (857 sq ft)



ELEVATIONS SCALE 1:200

Deluxe 6.8m (22' 3") external width version available. Please ask for details.

FLOOR PLAN SCALE 1:100



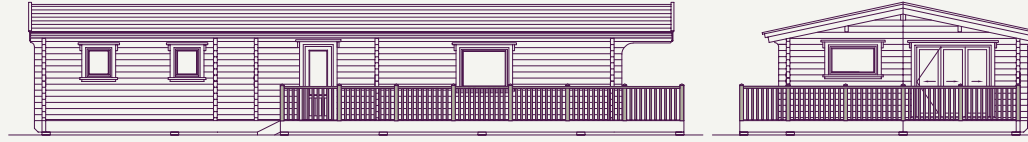
## ROOM DIMENSIONS

Entrance Hall	1.90m x 1.10m	(6' 3" x 3' 7")	Bedroom 3	3.35m x 2.80m	(11' 0" x 9' 2")
Living Area	5.94m x 5.65m	(19' 6" x 18' 6")	Bathroom	2.23m x 1.90m	(7' 3" x 6' 3")
Bedroom 1	4.27m x 2.80m	(14' 0" x 9' 2")	W/C	1.90m x 1.10m	(6' 3" x 3' 7")
Bedroom 2	3.07m x 3.05m	(10' 1" x 10' 0")			

# Pennine

3 Bedroom

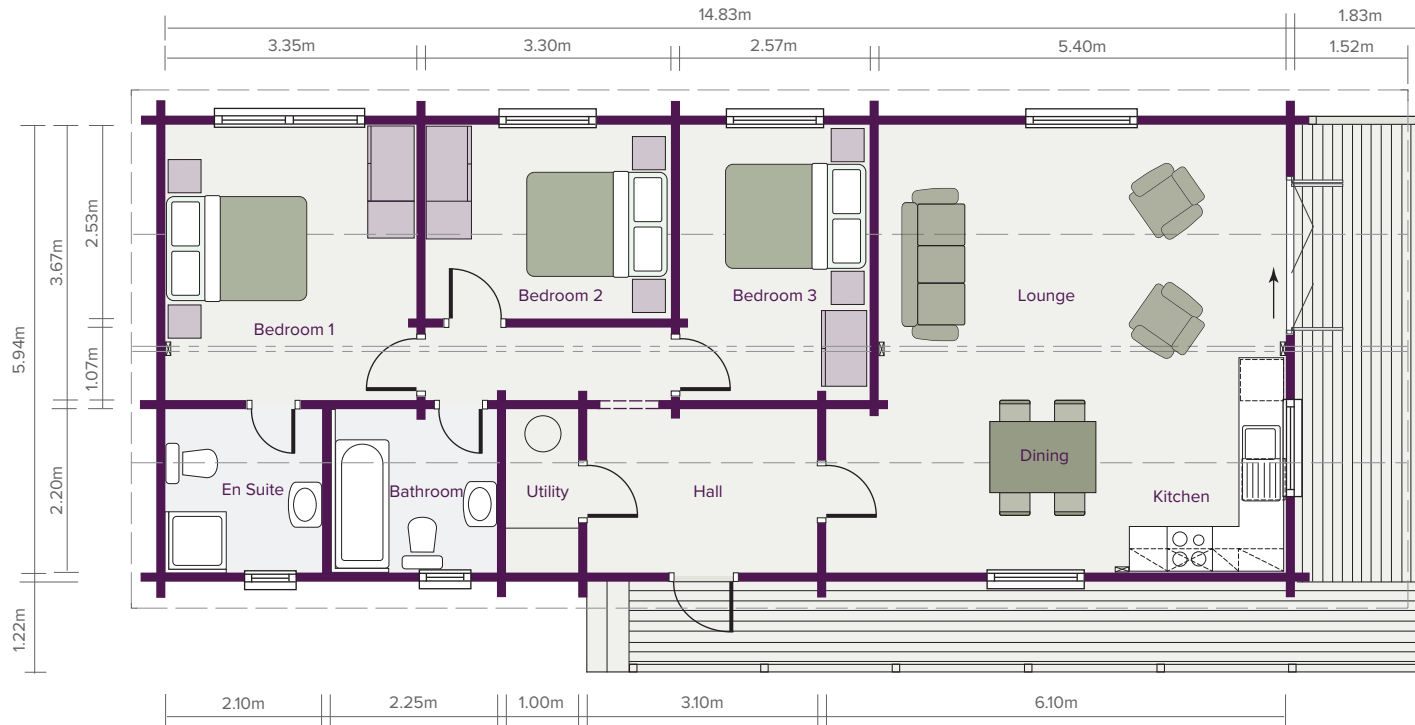
88.09m<sup>2</sup> (948 sq ft)



ELEVATIONS SCALE 1:200

Deluxe 6.8m (22' 3") external width version available. Please ask for details.

FLOOR PLAN SCALE 1:100



## ROOM DIMENSIONS

Entrance Hall	3.10m x 2.20m	(10' 2" x 7' 3")	Bedroom 1	3.67m x 3.35m	(12' 0" x 11' 0")	Bedroom 3	3.67m x 2.57m	(12' 0" x 8' 5")
Living Area	5.40m / 6.10m x 5.94m	(17' 8" / 20' 0" x 19' 6")	En Suite	2.20m x 2.10m	(7' 3" x 7' 0")	Bathroom	2.25m x 2.20m	(7' 4" x 7' 3")
			Bedroom 2	3.30m x 2.53m	(10' 10" x 8' 3")	Utility Room	2.20m x 1.00m	(7' 3" x 3' 3")

# Grampian

3 Bedroom

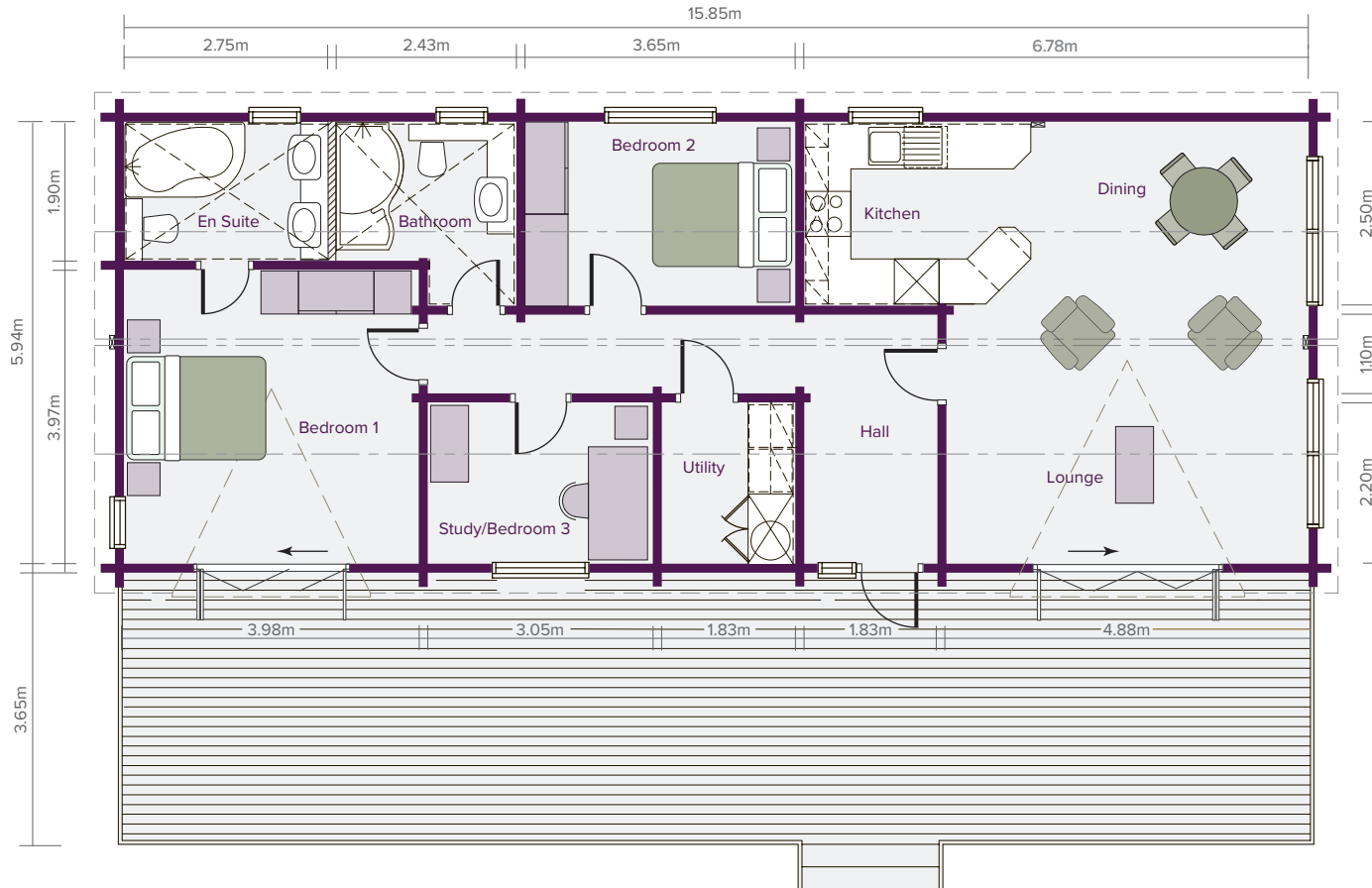
94.15m<sup>2</sup> (1,013 sq ft)



ELEVATIONS SCALE 1:200

Deluxe 6.8m (22' 3") external width version available. Please ask for details.

FLOOR PLAN SCALE 1:100



## ROOM DIMENSIONS

Living Area 4.88m / 6.78m x 5.94m  
(16' 0" / 22' 3" x 19' 6")

Entrance Hall 3.37m x 1.83m (11' 0" x 6' 0")

Bedroom 2 3.65m x 2.50m (12' 0" x 8' 2")

Bedroom 1 3.97m x 3.98m (13' 0" x 13' 2")

Bedroom 3 3.05m x 2.20m (10' 0" x 7' 2")

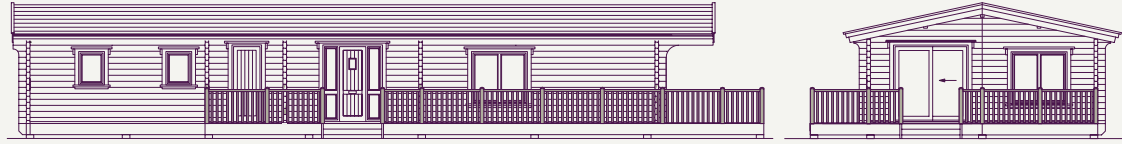
En Suite 2.75m x 1.90m (9' 0" x 6' 3")

Bathroom 2.43m x 1.90m (8' 0" x 6' 3")

# New Highland

3 Bedroom

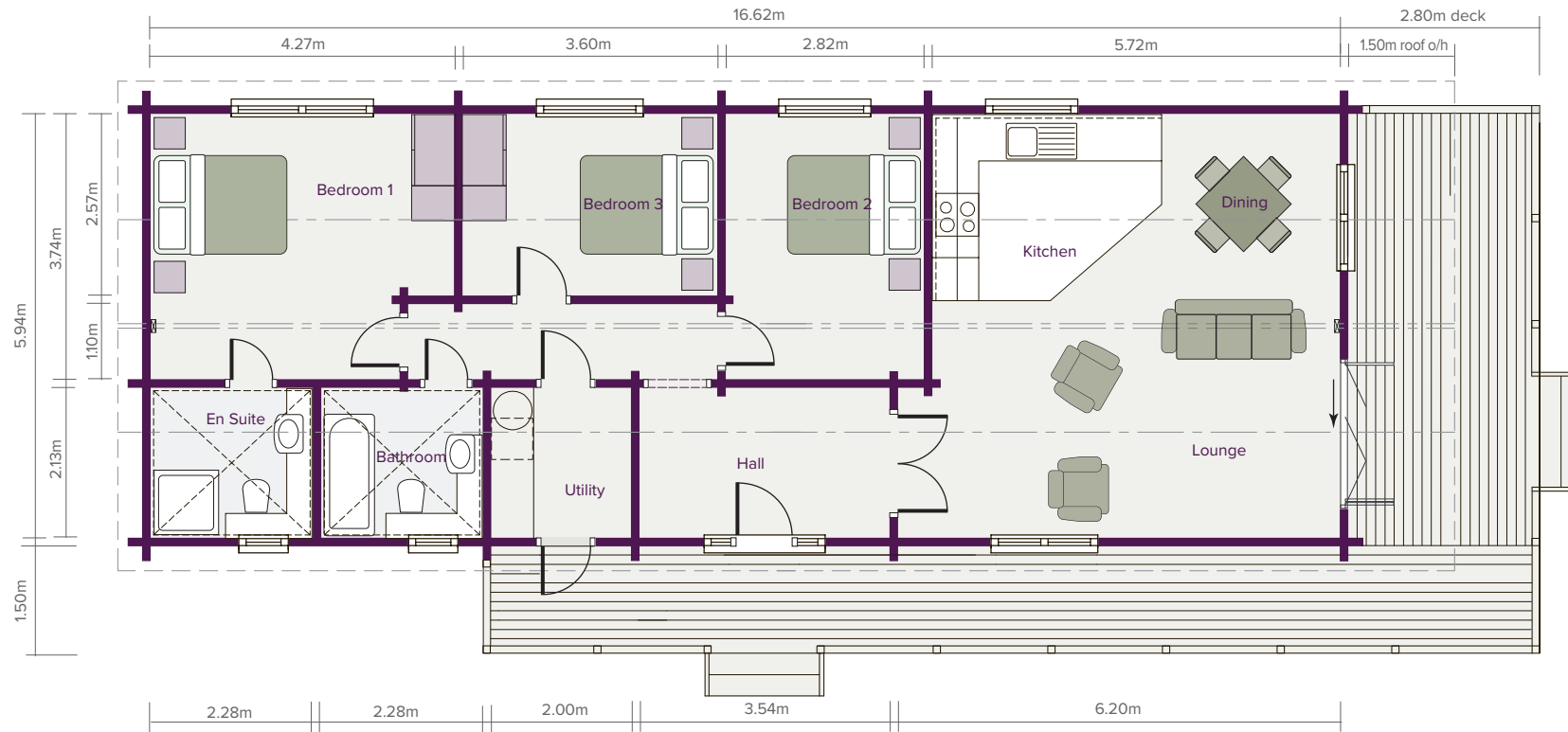
98.72m<sup>2</sup> (1,063 sq ft)



ELEVATIONS SCALE 1:200

Deluxe 6.8m (22' 3") external width version available. Please ask for details.

FLOOR PLAN SCALE 1:100



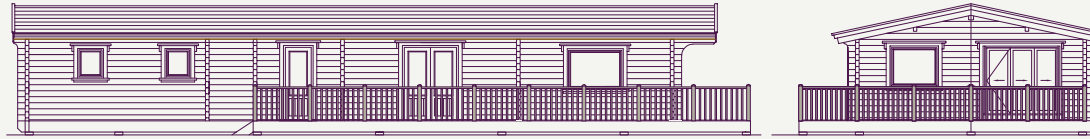
## ROOM DIMENSIONS

Entrance Hall	3.54m x 2.13m	(11' 7" x 7' 0")	Bedroom 2	3.74m x 2.82m	(12' 3" x 9' 3")
Living Area	5.94m x 5.72m	(19' 6" x 18' 9")	Bedroom 3	3.60m x 2.57m	(11' 9" x 8' 5")
Bedroom 1	4.27m x 3.74m	(14' 0" x 12' 3")	Bathroom	2.28m x 2.13m	(7' 6" x 7' 0")
En Suite	2.28m x 2.13m	(7' 6" x 7' 0")	Utility Room	2.13m x 2.00m	(7' 0" x 6' 6")

# Wicklow

3 Bedroom

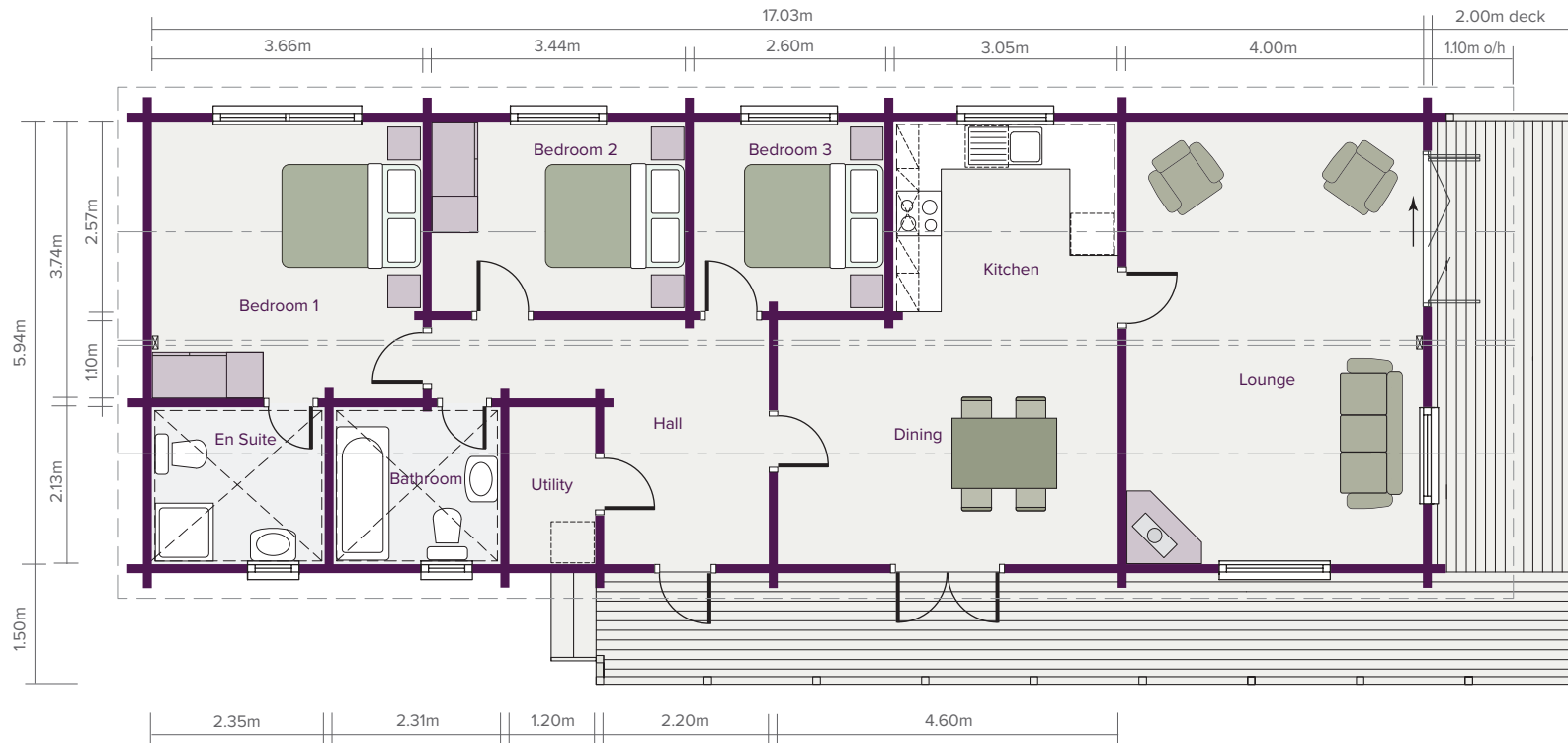
101.16m<sup>2</sup> (1,089 sq ft)



ELEVATIONS SCALE 1:200

Deluxe 6.8m (22' 3") external width version available. Please ask for details.

FLOOR PLAN SCALE 1:100



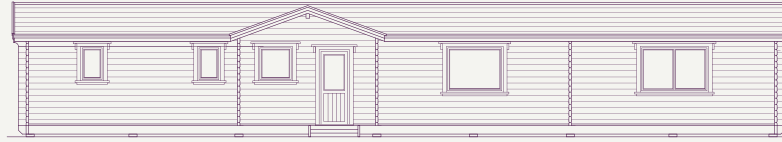
## ROOM DIMENSIONS

Entrance Hall	3.30m x 2.20m	(10' 10" x 7' 3")	Bedroom 1	3.74m x 3.66m	(12' 3" x 12' 0")	Bathroom	2.31m x 2.13m	(7' 7" x 7' 0")
Lounge	4.00m x 5.94m	(13' 1" x 19' 6")	En Suite/Shower	2.35m x 2.13m	(7' 8" x 7' 0")	Utility Room	2.13m x 1.20m	(7' 0" x 3' 11")
Dining Room	4.60m x 3.30m	(15' 1" x 10' 10")	Bedroom 2	3.44m x 2.57m	(11' 3" x 8' 5")			
Kitchen	3.05m x 2.57m	(10' 0" x 8' 5")	Bedroom 3	2.60m x 2.57m	(8' 6" x 8' 5")			

# Mendip

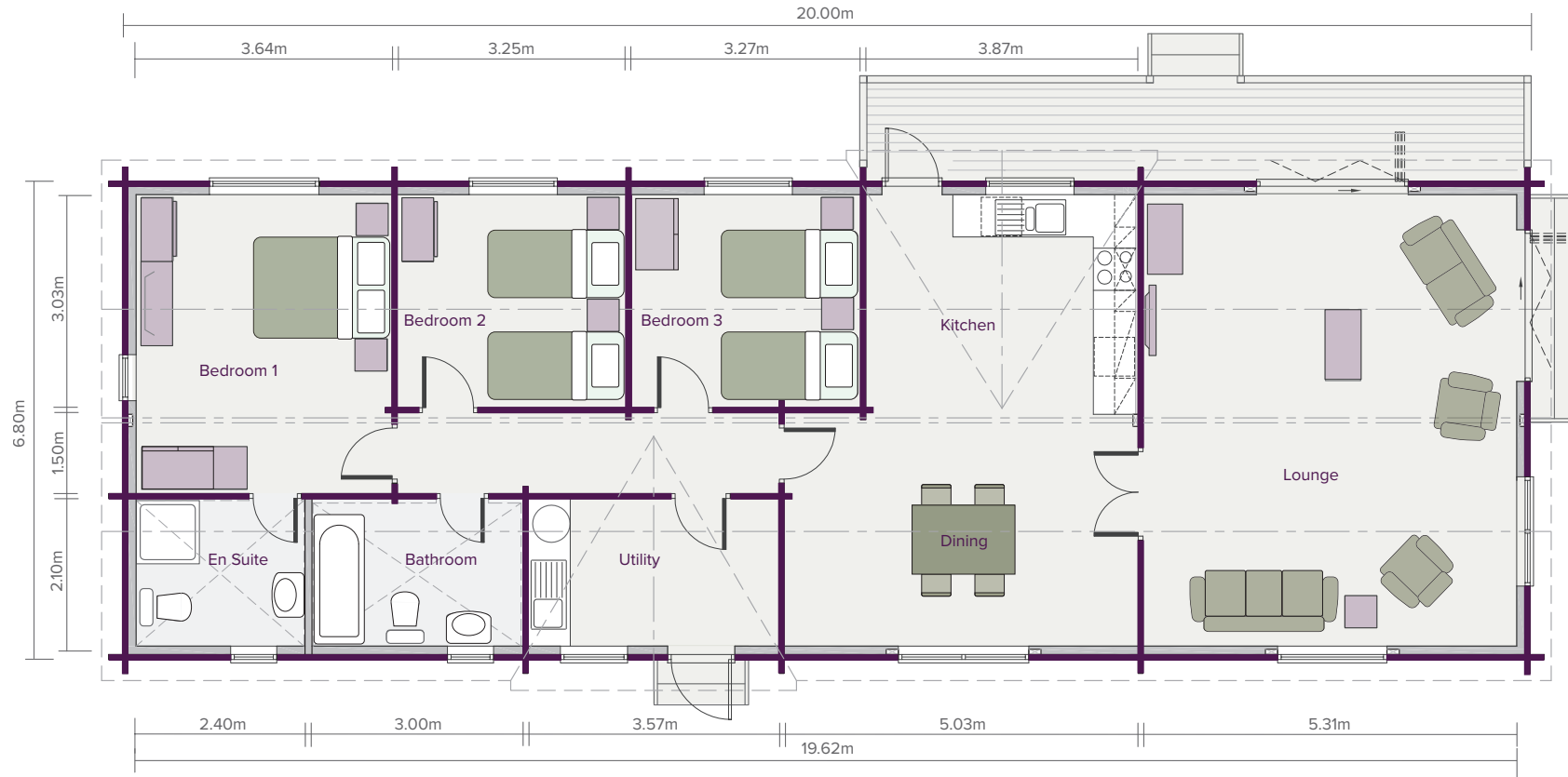
3 Bedroom

128.18m<sup>2</sup> (1,380 sq ft)



ELEVATIONS SCALE 1:200

FLOOR PLAN SCALE 1:100



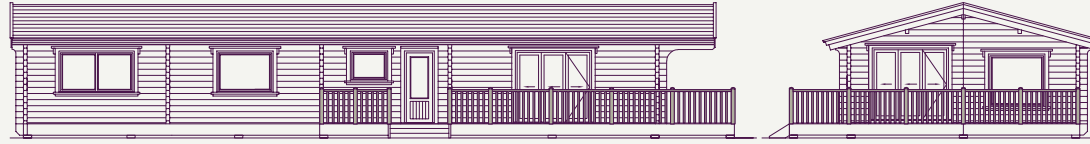
## ROOM DIMENSIONS

Lounge	6.42m x 5.31m	(21' 1" x 17' 5")	Utility Room	2.10m x 3.57m	(6' 11" x 11' 9")	Bedroom 3	3.30m x 3.27m	(10' 10" x 10' 9")
Dining Room	3.39m x 5.03m	(11' 1" x 16' 6")	Bedroom 1	4.25m x 3.64m	(13' 11" x 11' 11")	Bathroom	2.10m x 3.00m	(6' 11" x 9' 10")
Kitchen	3.03m x 3.87m	(9' 9" x 12' 7")	Bedroom 2	3.30m x 3.25m	(10' 10" x 10' 8")			

# Cairngorm

4 Bedroom

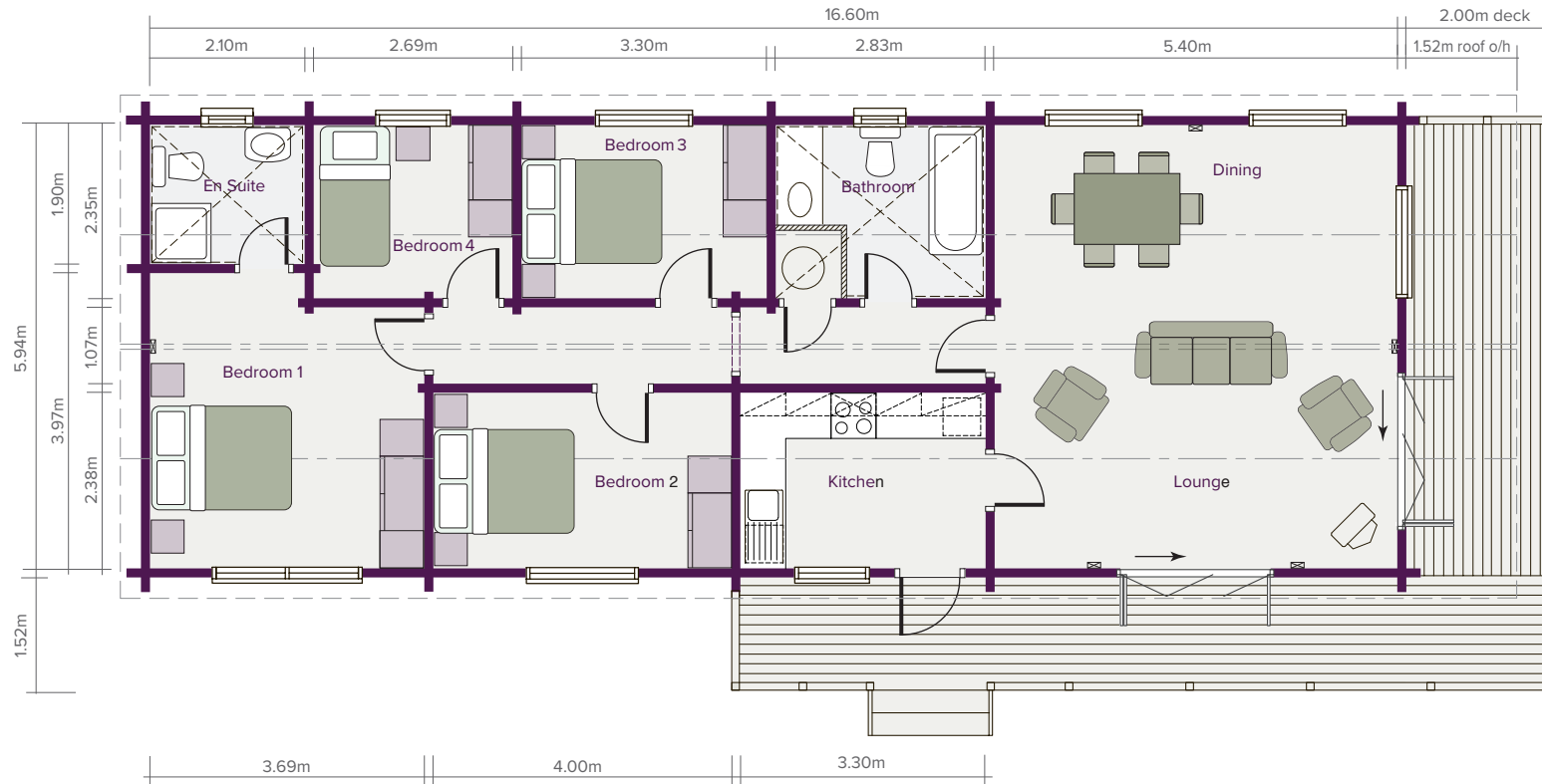
98.60m<sup>2</sup> (1,061 sq ft)



ELEVATIONS SCALE 1:200

Deluxe 6.8m (22' 3") external width version available. Please ask for details.

FLOOR PLAN SCALE 1:100



## ROOM DIMENSIONS

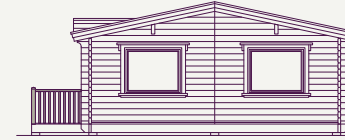
Living Area	5.40m x 5.94m	(17' 8" x 19' 6")	En Suite	2.10m x 1.90m	(6' 10" x 6' 3")	Bedroom 4	2.69m x 2.35m	(8' 10" x 7' 9")
Bedroom 1	3.97m / 3.52m x 3.69m	(13' 0" / 11' 6" x 12' 1")	Bedroom 2	4.00m x 2.38m	(13' 1" x 7' 10")	Bathroom	2.83m x 2.35m	(9' 3" x 7' 9")
			Bedroom 3	3.30m x 2.35m	(10' 10" x 7' 9")			



# Cambrian

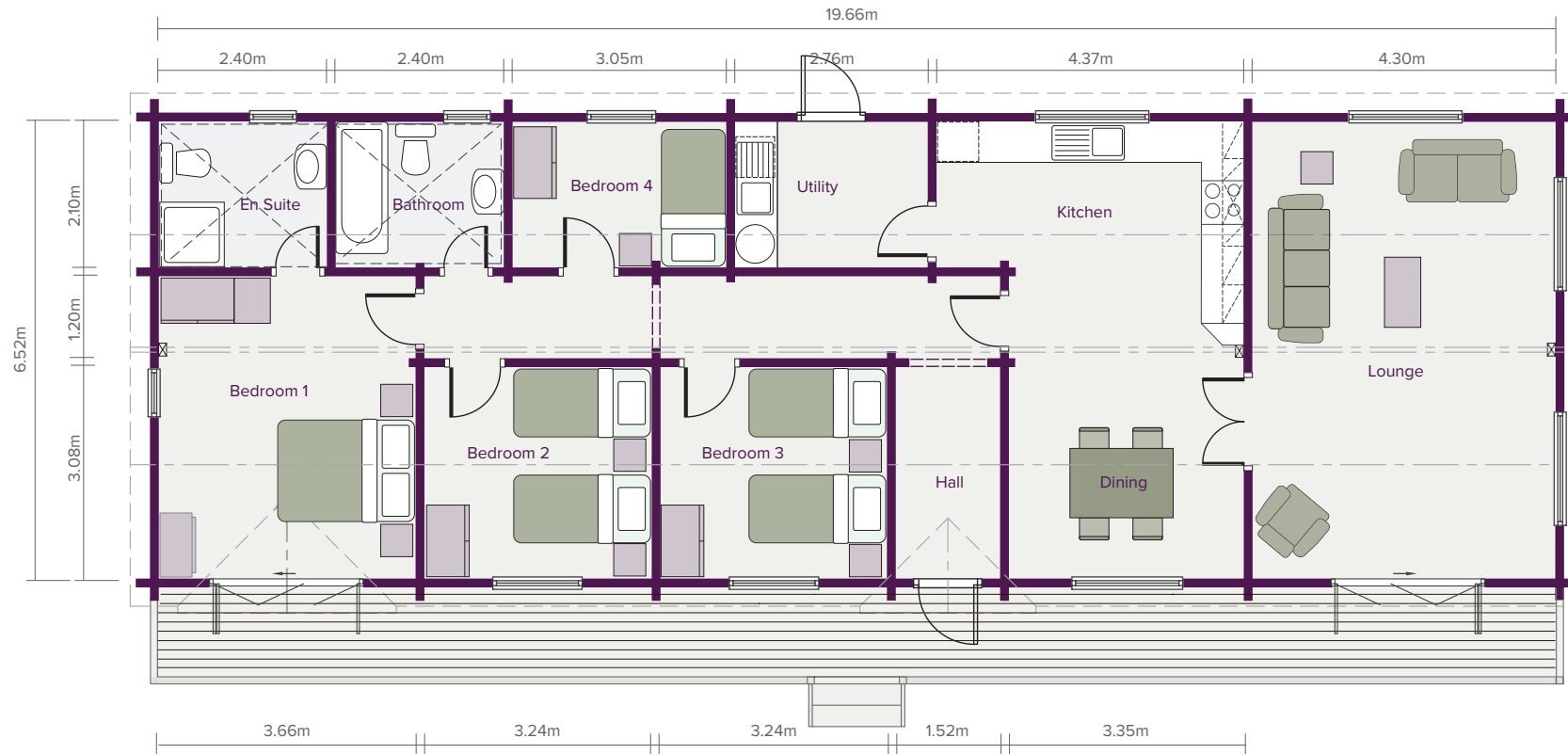
4 Bedroom

128.18m<sup>2</sup> (1,380 sq ft)



ELEVATIONS SCALE 1:200

FLOOR PLAN SCALE 1:100



## ROOM DIMENSIONS

Entrance Hall	3.08m x 1.52m	(9' 11" x 5' 0")	Utility Room	2.76m x 2.10m	(9' 0" x 6' 11")	Bedroom 3	3.24m x 3.08m	(10' 8" x 10' 0")
Lounge	6.52m x 4.30m	(21' 2" x 14' 1")	Bedroom 1	4.35m x 3.66m	(14' 3" x 12' 0")	Bedroom 4	3.08m x 2.10m	(10' 0" x 6' 11")
Dining Room	3.35m x 3.08m	(11' 1" x 9' 11")	En Suite/Shower	2.40m x 2.10m	(7' 10" x 6' 11")	Bathroom	2.40m x 2.10m	(7' 10" x 6' 11")
Kitchen	4.37m x 3.37m	(14' 4" x 11' 0")	Bedroom 2	3.24m x 3.08m	(10' 8" x 10' 0")			

# **BUILDINGS FOR LIFE**