



# NORWEGIAN LOG

SINCE 1984

BESPOKE LOG CABINS & FAMILY SANCTUARIES

CRAFTING BRITAIN'S FINEST LOG CABINS

# Contents

The Dream Begins	2 - 3
The Beauty of Bespoke	4 - 7
Owner's Story - Love at First Sight	8 - 9
Planning Permission	10 - 11
Owner's Story - A Home that Brings Peace	12- 13
Signature Designs	14 -57
Owner's Story - The Little Lodge Story	58 - 59
Norwegian Log Community	60 - 61
Owner's Story - The Heart of the Farm	62 - 63
Aftercare & Warranties	64 - 65
A Partnership Built on Trust	66 - 69
Private Showroom Tour	70
Message from our CEO	71



*Imagine a sanctuary, a place where the rhythm of life slows, and the beauty of nature embraces you. At Norwegian Log, we craft homes and create dreams.*



*Since 1984, Norwegian Log has built superior log cabins from slow-grown Scandinavian timber, known for their warmth, comfort, and exceptional energy efficiency. This is where your cabin dream begins...*





## STEP ONE

# DISCOVER YOUR SIGNATURE STYLE

Whether you're drawn to timeless charm or modern sophistication, our log home ranges are designed to elevate your space and reflect your vision. Each style embodies quality, comfort, and craftsmanship, whilst offering a distinct character and experience.

## CONTEMPORARY

For those who dream of modern design freedom, our Contemporary cabins redefine what's possible. Using our own patented jointing system, we can achieve sleek lines, bold layouts, and stunning architectural features — from expansive glazing, to open-plan interiors that flood with light.



*and*



## TRADITIONAL

Rooted in classic craftsmanship, our Traditional cabins capture the warmth and authenticity of natural log construction. The interlocking cross-joint design creates a home that feels solid, secure, and effortlessly inviting.

## STEP TWO

# THE BEAUTY OF BESPOKE. YOUR HOME, UNIQUELY YOURS

Your home should be as unique as you are, which is why we don't believe in off-the-shelf designs. Every project begins with a conversation about how you live. From there, we tailor our floorplans to suit your needs—whether that's additional bedrooms, a dedicated home office, or a hobby room—or we design entirely from a blank canvas to create a layout that truly fits your lifestyle.

From the first sketches to the final finishes, our experienced team will guide you through each stage of the process. Together, we'll explore layout options, consider how each space should feel and function, and select materials that reflect your taste. We use only slow-grown Scandinavian timber for long-lasting structural integrity, complemented by premium engineered timber doors and windows, and high-quality finishes for kitchens and bathrooms, ensuring your home is crafted to serve for generations.

Our homes also feature unique architectural elements that elevate both style and experience. Signature vaulted ceilings come as standard to create an impressive sense of space, while optional roof gables or fully glazed elevations allow you to introduce dramatic light and architectural interest. With high insulation levels built in as standard and the option to integrate modern sustainable technologies, your home will be not only beautiful and comfortable but also energy-efficient and environmentally responsible.

## FEATURED IN...

THE  TIMES

The Telegraph

GRAND  DESIGNS

Ideal Home





### STEP THREE

## FULL-SERVICE FINISH, FROM DESIGN TO DELIVERY

For those who desire complete peace of mind, our Full Service Package delivers an effortless, end-to-end experience – every detail considered, from the ground up.

We begin by collaborating closely with you to craft your ideal design, ensuring your new home's layout meets your needs and maximises the potential of your plot. Our team will then secure any necessary planning consent while decisions are being made regarding kitchen and bathroom designs, finishes, and fixtures and fittings. We offer a curated selection of premium interior fit out options, allowing you to personalise every element to suit your lifestyle and aesthetic.

When the installation commences, our dedicated team handles every stage with precision and care. We manage the entire project from groundworks through to the final handover, ensuring the process of bringing your log home to life is a stress-free and exciting experience.

Your bespoke home journey begins with inspiration and concludes with a beautifully finished space, crafted with care, ready to live in, and designed to last.



## STEP FOUR

# YOUR LOG CABIN JOURNEY

You'll enjoy a seamless experience where our team personally guides you through every step with unmatched expertise and meticulous attention to detail—so you can relax knowing everything is handled perfectly, without stress or surprises.



### SHOWROOM TOUR

Your journey begins with a personalised viewing.



### DESIGN & PLANNING

Your bespoke design, expertly managed by us.



### BESPOKE ASSEMBLY

Your home will be crafted with precision and care.



### INSTALLATION

Adhering to the highest standards of craftsmanship



### FIT OUT

A bespoke, fully-fitted kitchen and bathroom.



### AFTERCARE

Comprehensive support for generations to come.

[GET YOUR QUOTE](#)



## Owners' Community

A welcoming UK-wide network where Norwegian log cabin owners connect, share practical advice and inspiration, and support each other in creating and caring for their perfect timber retreat.

# LOVE AT FIRST SIGHT

The Cooke family fell instantly in love with a beautiful Edwardian villa tucked away at the end of a quiet lane in the Kent countryside. Fifteen years later, the home has welcomed a stylish new addition: Holly's contemporary two-bedroom Norwegian Log annexe, thoughtfully positioned at the edge of the garden.

After losing her dad, Holly and her mum Christine decided to pool their resources. With rising property prices, increasing living costs, and four horses (plus cats!) to care for, living close together simply made sense.

Avid skiers, Holly and Christine were naturally drawn to the warmth and charm of a log-built home. Norwegian Log stood out for its craftsmanship, modular flexibility, and stunning glass frontage. ***"It doesn't feel like a box,"*** Christine says. ***"It has such unique character."***

Norwegian Log's relaxed, pressure-free approach also made the decision easy. With the ability to classify the annexe under the Caravan Act, the process was surprisingly smooth.



Selling her flat enabled Holly to join her mum's mortgage, ensuring financial security for both. The annexe's energy efficiency means it costs less than a third of the main house to run, and even with premium fixtures and landscaping, it came in at a significant saving compared to a local new build.

"It was important that I stayed on the property ladder," Holly explains. ***"One day, we'll swap homes. When I start a family, Mum will be our built-in nanny,"*** she laughs.

The adapted Lillehammer design includes a bright open-plan living, study, and kitchen area, two double bedrooms, a dressing room, and a family bathroom. ***"It feels so spacious. We've had 25 people in here for a party! Everyone walks in and says, 'Wow!'"*** Holly says.

Watching the cabin go up was a joy for both. ***"Seeing the logs arrive and the team assemble it piece by piece was amazing. It only took 10 weeks,"*** Christine recalls.

Living just across the lawn, the pair share breakfasts, swap milk, and enjoy evening G&Ts without a drive home. With both working full-time, they appreciate having someone always on-site to care for the animals.

They've also planned ahead. ***"In future, it could become a holiday let again, or maybe Holly's teenager will move in,"*** Christine says. ***"It gives us flexibility for generations."***

Holly couldn't agree more: ***"This was always meant to be our forever place. It's warm, welcoming and truly home."***





## NAVIGATING PLANNING PERMISSION

Navigating planning permissions can feel daunting, but we're here to make the process clear, reassuring, and expertly guided. Our transportable log cabins and garden annexes are designed for rapid installation with minimal disruption.

Planning permission will not be required for one of our annexes if it is sited within the garden of a dwelling and used by family members. We will secure a Lawful Development Certificate from your Local Authority to confirm this as part of our service and offer a full money-back guarantee if, for any reason, the certificate is not granted.

For other, non-annexe residential accommodation, for example new dwellings, planning permission will be required. The circumstances of the use, and intended plot, will determine the likelihood of success. For further clarity, please contact our expert team for personalised, straightforward advice.

## GUARANTEED PLANNING SERVICE

We stand behind our planning expertise—completely. When you choose us to site your annexe, in the garden and for family member use, you're protected by our 100% Money-Back Guarantee. In the unlikely event that the Lawful Development Certificate is not approved, we will refund you in full. No questions, no hassle.



# A HOME THAT BRINGS US PEACE

Nestled on a family-run 80-acre farm in Surrey, a story of connection, calm and care finds its perfect home in a striking log-built annexe. This isn't just a building, it's a space of renewal, designed with love to empower a family and support their son.

For Marisa, her husband Jason and their two teenage sons, the previous terraced house nearby had grown unfit for purpose. Their youngest son lives with additional needs, and the house's stairs, noisy neighbours and lack of safe outdoor access created constant stress and worry.

Hope arrived when Marisa's father, Robin, spotted a magazine feature on Norwegian Log and suggested visiting a show home. *"The moment we stepped inside... we were completely wowed - not just by the beautiful cabin itself, but by the incredible feeling it had, the sense of calmness and cosiness,"* she recalls.



Moving to single-level living, the family chose a four-bedroom home tailored to their needs. Every detail was planned with care: a walk-in shower for accessibility, cupboards at reachable heights, and a dedicated therapy room where their son can unwind.

Soon after the move, transformation followed. Their younger son now enjoys strolls with his dog in the garden, and his anxiety has eased significantly. Marisa comments: ***“He can now take his dog for peaceful walks ... and he’s noticeably less stressed.”***

For Marisa, the change in her own life has been profound too. ***“I sleep so much better because I no longer have that constant worry about our son’s safety on the stairs.”*** She adds that the log cabin’s low-dust environment and low maintenance interior have helped foster stability and calm.

Robin and Jacqui, the grandparents next door, relish the arrangement too. ***“It’s so good to have family close by. The cabin is magnificent; it’s such a wonderful setup,”*** says Robin.

Above all, the family praise the team behind the build. ***“They don’t just finish the build and disappear ... Norwegian Log didn’t let us down once. They have been brilliant, absolutely first class.”***

This story of transformation shows how a thoughtfully designed home can deliver far more than shelter. It becomes a source of safety, serenity and shared life.







# EXPLORE OUR SIGNATURE DESIGNS

## *Traditional*

### **ONE BEDROOM**

Kelso	32.57m <sup>2</sup> (350 sq ft)	18
Melrose	45.82m <sup>2</sup> (493 sq ft)	20

### **TWO BEDROOM**

Cresta	48.75m <sup>2</sup> (525 sq ft)	22
Sherwood	59.28m <sup>2</sup> (638 sq ft)	24
Alpine	64.70m <sup>2</sup> (696 sq.ft)	26
Malvern	78.30m <sup>2</sup> (843 sq ft)	28
Skye	113m <sup>2</sup> (1,216 sq.ft)	30

### **THREE BEDROOM**

Nordic	85.95m <sup>2</sup> (925 sq.ft)	32
Pennine	94.84m <sup>2</sup> (1021 sq.ft)	34
Wicklow	108.60m <sup>2</sup> (1,169 sq.ft)	36
Mendip	136m <sup>2</sup> (1,464 sq ft)	38
Windermere	136m <sup>2</sup> (1,464 sq ft)	40

### **FOUR BEDROOM**

Cambrian	136m <sup>2</sup> (1,464 sq.ft)	42
----------	---------------------------------	----

## *Contemporary*

### **ONE BEDROOM**

Bergen	33.70m <sup>2</sup> (363 sq.ft)	46
Oslo	48.12m <sup>2</sup> (518 sq.ft)	48

### **TWO BEDROOM**

Roros	61.58m <sup>2</sup> (663 sq.ft)	50
Stavanger	79.72m <sup>2</sup> (858 sq.ft)	52

### **THREE BEDROOM**

Narvik	115.65m <sup>2</sup> (1,245 sq.ft)	54
Tromso	130m <sup>2</sup> (1,400 sq.ft)	56

*Browse All*



NORWEGIAN LOG

*Traditional Collection*

ROOTED IN HERITAGE, BUILT FOR TODAY



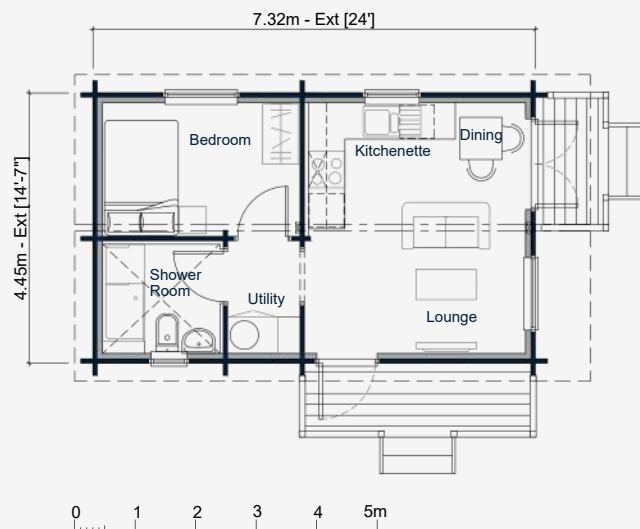
# KELSO

## 1 BEDROOM

32.57m<sup>2</sup> (350 sq.ft)



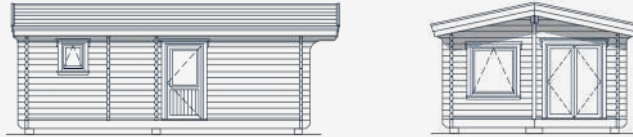
The Kelso is the perfect starting point for creating a beautiful residential home, offering a simple and well balanced structure shown in its clean elevations and classic roofline. One bedroom, shower room, and open plan kitchen / living area offer comfortable amenities in a 32.57m<sup>2</sup> footprint.



**FLOOR PLAN SCALE 1:125**

*“Our Norwegian Log cabin has given us everything we dreamed of – a beautifully designed, low-maintenance home that keeps us close to family, connected to nature, and perfectly balances practicality with the joy of everyday living.” — Georgina & David Hand.*

ELEVATIONS SCALE 1:200



## *A Dream Set in the Valleys*

In the breathtaking embrace of the Brecon Mountains, nestled high on a garden hill, lies a bespoke Norwegian Log cabin that has become home to Georgina and David Hand. Their journey to this idyllic spot, a blend of practicality and passion, began in 2020 and saw them officially move into their custom-built log cabin in 2021.



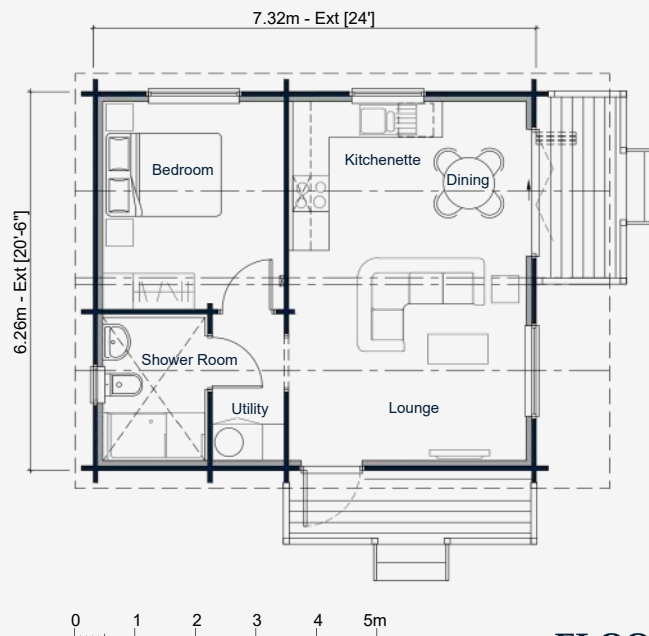
# MELROSE

**1 BEDROOM**

45.82m<sup>2</sup> (493 sq.ft)



The Melrose is a beautifully proportioned one bedroom home that offers generous residential living while still remaining adaptable to a wide range of plots and settings. We reshape and redesign the layout to suit your garden or land, adjusting door positions, window placements, accessibility features, and internal flow to create a home that works perfectly with the natural character of your plot.

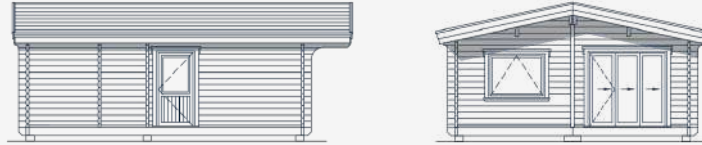


**FLOOR PLAN SCALE 1:125**

*“My cabin has completely transformed my life. It’s given me the freedom to live my lifelong dream with my horses right outside my window. It’s my sanctuary, my independence, and my happy place all in one.” — Becky Wastall, Isle of Wight.*

# MELROSE

ELEVATIONS SCALE 1:200



## *A Life Built Around Horses*

Life often leads us down new and unexpected paths. For Becky, a recent chapter has involved creating a new beginning in a quiet, rural haven in Newport, Isle of Wight. Here, in a secret pocket of nature's embrace, she has built a life centred on her greatest passion. To read Becky's story, scan the QR code.



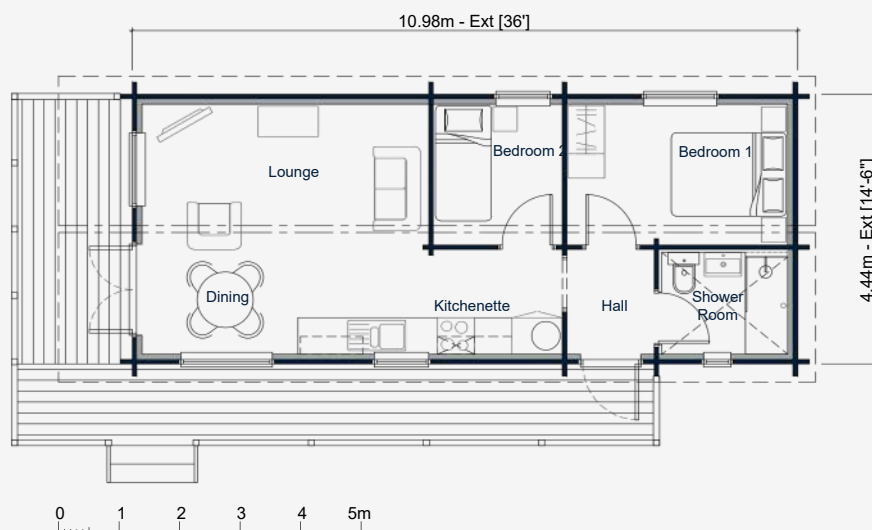
# CRESTA

**2 BEDROOM**

48.75m<sup>2</sup> (525 sq ft)



The Cresta is a beautifully efficient two bedroom home designed to fit comfortably into narrow or elongated gardens. The long, streamlined layout makes the Cresta the ideal choice for plots where width is limited but length can be used creatively.



**FLOOR PLAN SCALE 1:125**

*“Since building our Little Lodge, my mother-in-law is happier, healthier, and thriving. It’s brought our family closer together while still giving her a wonderful space she can truly call her own.”*

*— Jayne Thompson, Birmingham.*

ELEVATIONS SCALE 1:200



[BOOK A SHOWROOM TOUR](#)

## The Best of Both Worlds

*"All my friends want one," said Susan Price. "I have the best of both worlds, with my own front door and my daughter across the garden. And I feel as though I'm on a permanent holiday!"* Susan is the proud owner of a Norwegian Log home which sits at the bottom of her daughter Tracey's garden. To read Susan's story, scan the QR code.



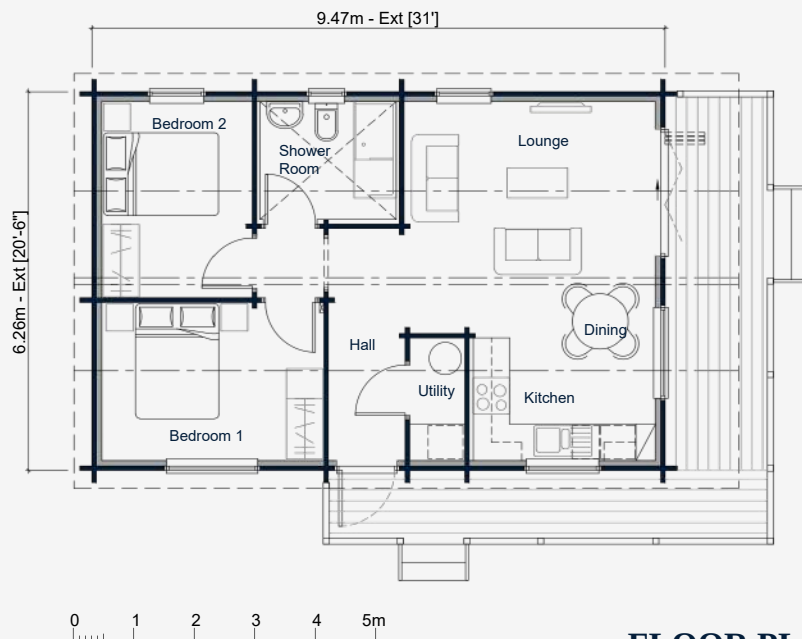
# SHERWOOD

**2 BEDROOM**

59.28m<sup>2</sup> (638 sq ft)



The Sherwood offers a spacious two bedroom residential layout that provides comfort, practicality and a strong sense of home. The floorplan is well balanced, featuring a generous lounge and dining area, two private bedrooms, a full shower room, a utility space, and a well-equipped kitchen.

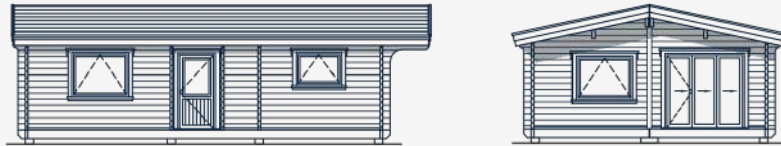


**FLOOR PLAN SCALE 1:125**

*“My Aquila Cottage has given me the perfect retirement sanctuary. Beautifully designed, calming space that reconnects me with my family roots, the nearby beach, and a healthier, more peaceful lifestyle.”*  
— Liz Smith, Isle of Wight.

# SHERWOOD

ELEVATIONS SCALE 1:200



## A Cherished Return to Family Shores

For Liz Smith, the idea of a log cabin wasn't a sudden whim but a carefully considered vision for her retirement. Facing the eventual sale of her family home, Liz was determined to remain in Lane End, Bembridge, the place where she grew up and held deep historical family significance. *"This part of Lane End, where I grew up, is incredibly important to me,"* she explains. To read Liz's story, scan the QR code.



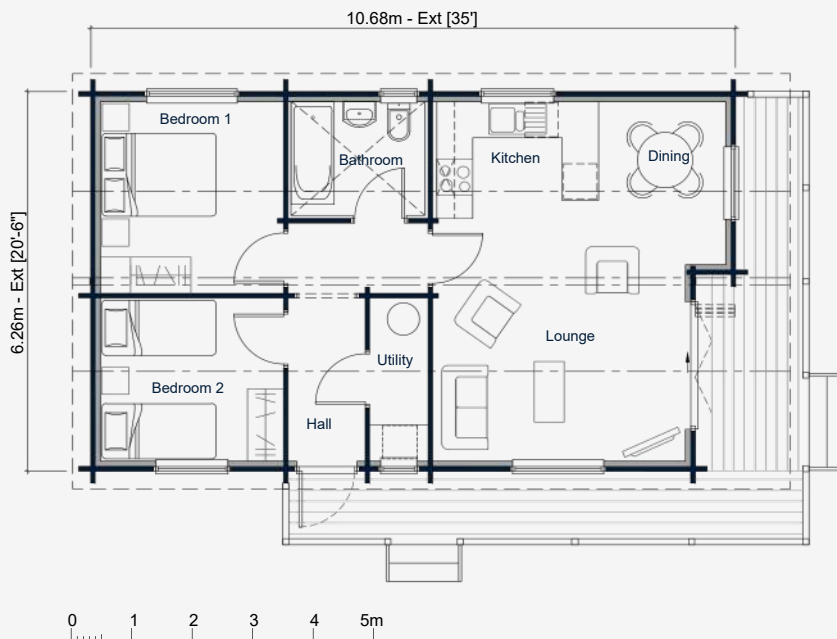
# ALPINE

**2 BEDROOM**

64.70m<sup>2</sup> (696 sq.ft)



The Alpine delivers an impressive two-bedroom residential layout designed for comfort, independence and everyday practicality. It offers generous living space while keeping loved ones close.



**FLOOR PLAN SCALE 1:125**

*“We felt a little as though we were on holiday to begin with but we are getting used to it now. Visitors are very impressed with how spacious it is.”*

*— Rowland Blackwell, Cotswolds.*

ELEVATIONS SCALE 1:200



## Planning Dilemma Resolved

Tucked away in a beautiful part of the Cotswolds is the new log annexe home of farmers Rowland and Susan Blackwell. It overlooks the charming hillside hamlet Rowland grew up in and where many of their family still live - and they are delighted they too can still call it home. To read the Blackwell's story, scan the QR code.



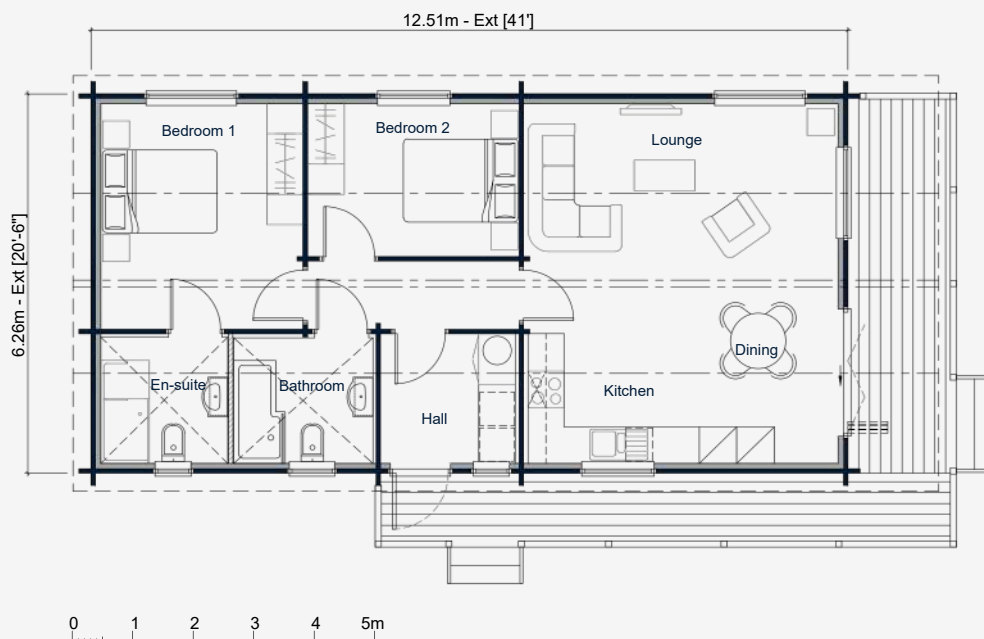
# MALVERN

**2 BEDROOM**

78.30m<sup>2</sup> (843 sq ft)



The Malvern offers a generous two-bedroom residential layout designed for long-term comfort, privacy, and modern living. Design highlights include a spacious king size main bedroom with ensuite, and large, open plan kitchen and living area.

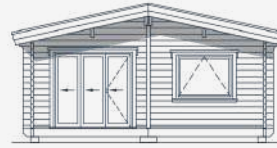


**FLOOR PLAN SCALE 1:125**

*"I have room for a guest to stay but the size means it's also very manageable. It fits like a glove, everything is within two steps and easy to reach, it has exceeded my expectations and everything has just turned out brilliantly." — Dave Swift, Somerset.*

# MALVERN

ELEVATIONS SCALE 1:200



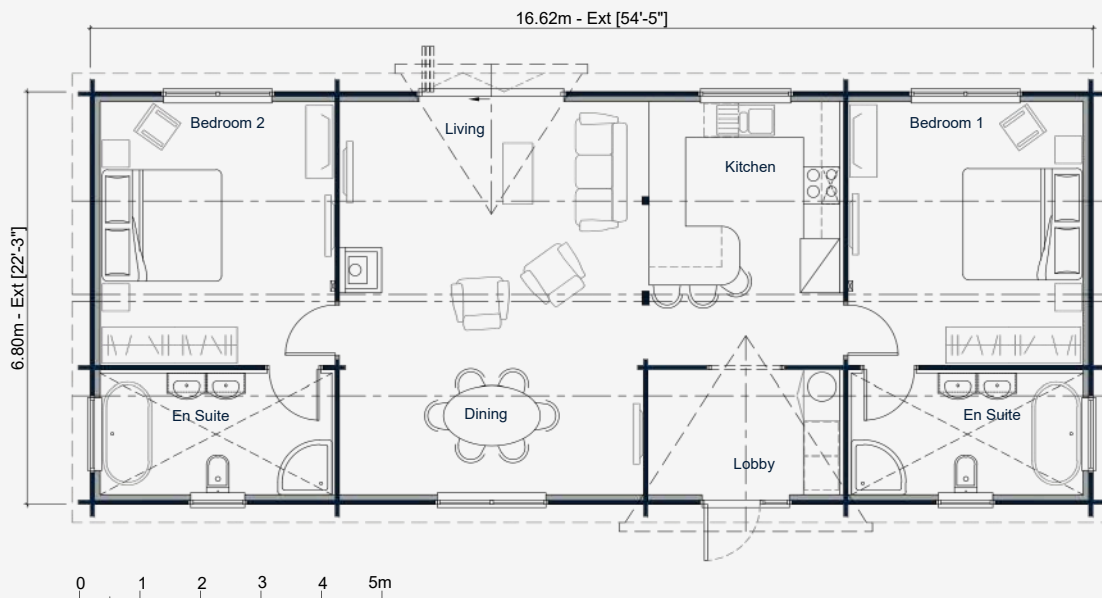
## *Independence. With Family Beside You*

When Kelly and her father Dave found themselves facing big changes, the arrival of a bespoke annexe on Kelly's garden in Somerset brought them both independence and peace of mind. To read Kelly & Dave's story, scan the QR code.





The Skye offers a distinctive residential layout that places a king-size bedroom with ensuite at each end of the home, creating natural separation, privacy and a well balanced interior. The central living space gives occupants their own defined areas while keeping shared spaces bright and open.

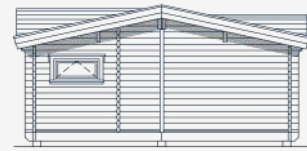


**FLOOR PLAN SCALE 1:125**

*"We've been able to create an ideal new home that has been tailored to mum's exact needs and fiercely guarded independence. The overall process was very smooth!"*

*- Rosie Lampard, Wiltshire.*

ELEVATIONS SCALE 1:200



## *Tailored to Mum's Needs*

Rosie Lampard had to make decisions regarding the welfare and the wellbeing of her 83-year-old mother Aileen. Rosie explored all sorts of solutions to find a new home where Aileen could live close by and that could be navigated safely and easily in a wheelchair. It seemed an impossible task until they found Norwegian Log. To read Rosie's story, scan the QR code.



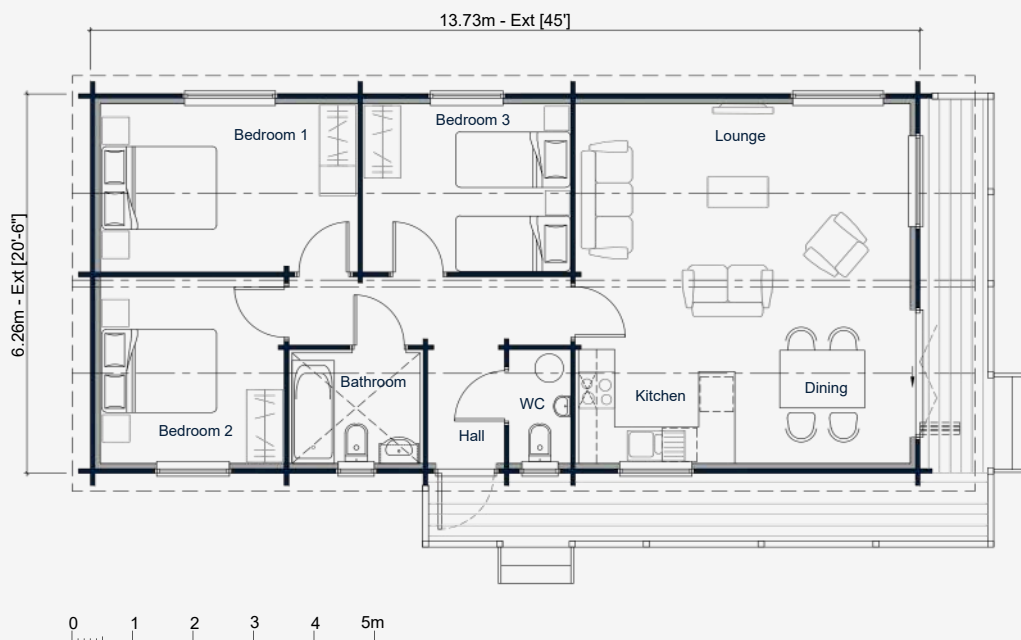
# NORDIC

**3 BEDROOM**

85.95m<sup>2</sup> (925 sq ft)



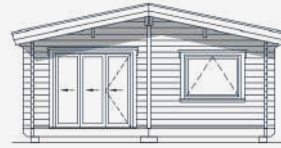
The Nordic Log Home is a spacious fully fitted three-bedroom family and granny annexe, designed to provide a comfortable and versatile residential space for up to six occupants.



**FLOOR PLAN SCALE 1:125**

*“Our cabin offers more space than Mum’s previous home, a warm and welcoming environment, it’s wonderful being just steps away from family while still feeling completely independent at the same time.” — Julie & Avril Thomas.*

ELEVATIONS SCALE 1:200



## The Unexpected Upgrade

When a grandparent decides to move closer to their family, the expectation is often a move to a smaller property. But for Avril Thomas, her beautiful new log cabin has delightfully defied that expectation, offering even more space than her previous home, with the added joy of being just a few steps away from her daughter Julie's house. To read Avril's story, scan the QR code.



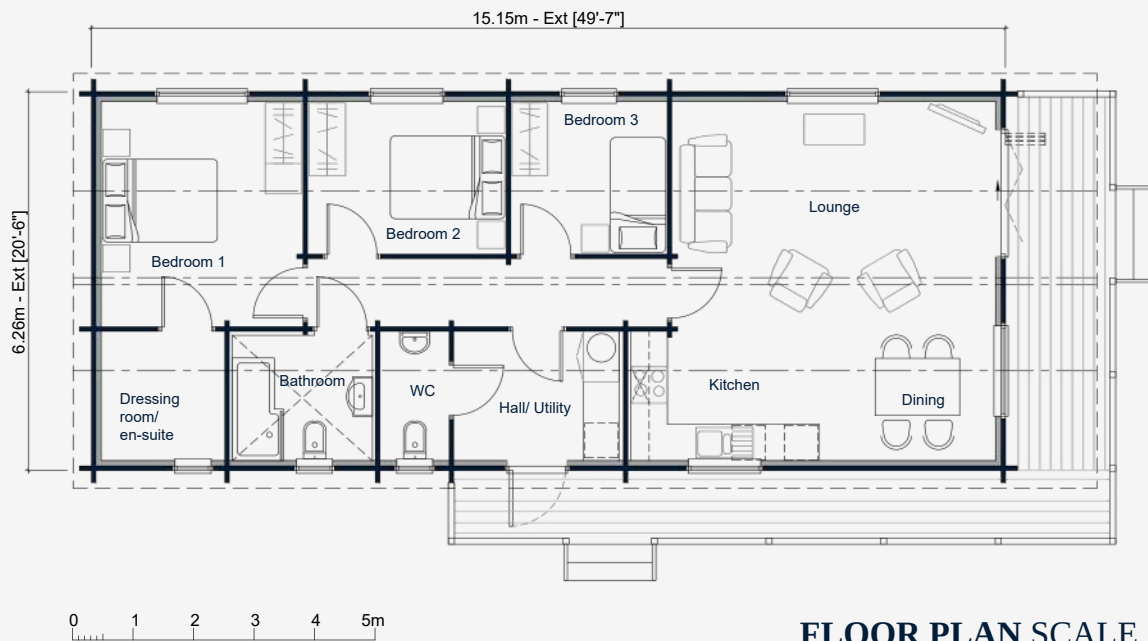
# PENNINE

**3 BEDROOM**

94.84m<sup>2</sup> (1,021 sq.ft)



The Pennine is a spacious three bedroom residential log home designed for families, guests or multi generational living. Design highlights include a king size master bedroom with dressing room / ensuite, spacious utility room, along with an expansive open plan kitchen and living area.

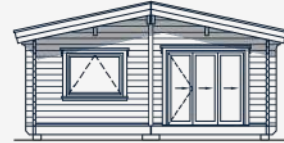
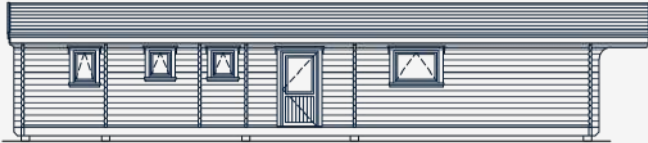


*"We love that our annexe is just steps from our daughter and grandchildren, making everyday moments, sleepovers, and family gatherings a true joy."*

*— Brian & Barbara Taylor, Hertfordshire.*

# PENNINE

ELEVATIONS SCALE 1:200



## *For Family Connection*

With the final touches being lovingly added to the smart paving in front of their new log home, Brian and Barbara Taylor are embracing the wonderful reality of multi-generational living. Just a stroll across their pretty garden, past a blossoming fruit tree, lies the home of their daughter Selina, her husband Rob, their two children, and their dog. To read the full story, scan the QR code.



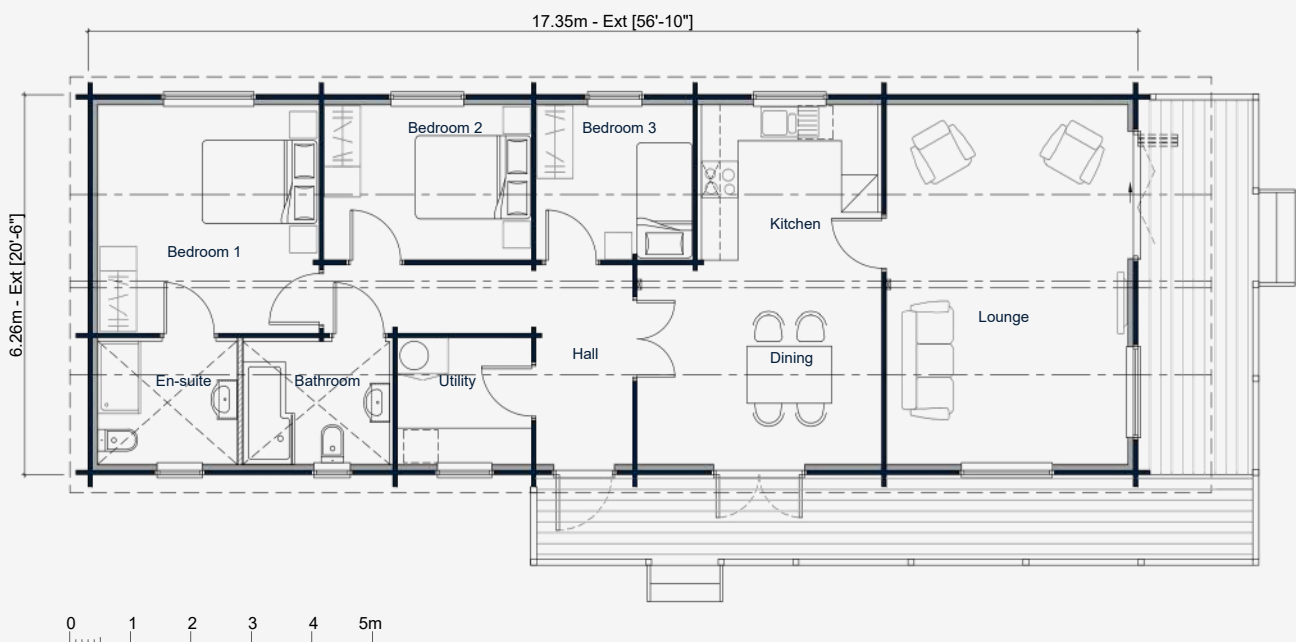
# WICKLOW

**3 BEDROOM**

108.6m<sup>2</sup> (1,169 sq.ft)



The Wicklow is a spacious and beautifully planned three-bedroom residential log home designed for modern family living. The design features a spacious master suite, 2 further double bedrooms, a large kitchen / dining room, and a separate lounge.



**FLOOR PLAN SCALE 1:125**

*“Our annexe is perfect for our family! It’s stylish, spacious, and keeps us all connected. It feels completely homely while future-proofing our lives.”*

*— Christine & Holly Cooke, Kent.*

# WICKLOW

ELEVATIONS SCALE 1:200



## *Living the Dream!*

On a Sunday drive in the countryside, Tina Lewis and Alan Rigby caught sight of several alpacas, got talking to their owner and from that moment on knew they wanted these gentle, friendly, inquisitive creatures to somehow be part of their future. Fast forward eight years and the couple's dream has come true as they now run *Sol Alpacas*, a successful breeding farm in picturesque rural Dorset. To read their story, scan the QR code.



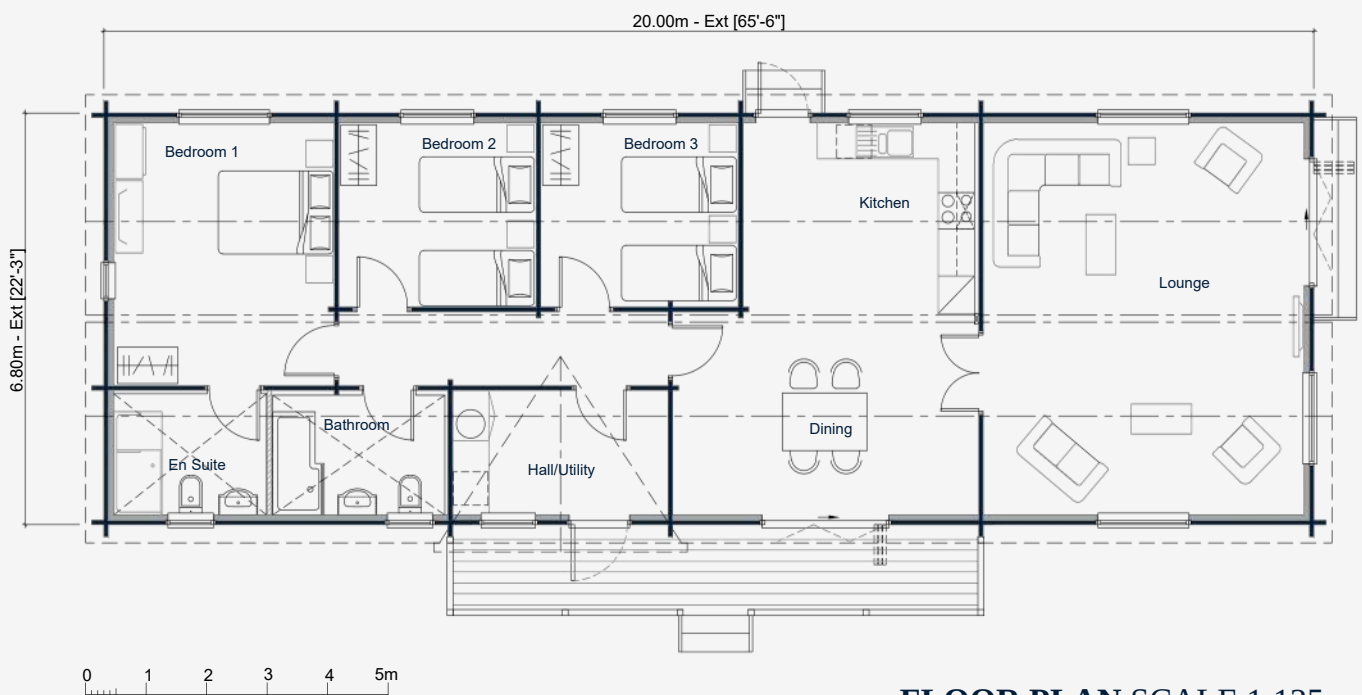
# N MENDIP

**3 BEDROOM**

136m<sup>2</sup> (1,464 sq. ft)



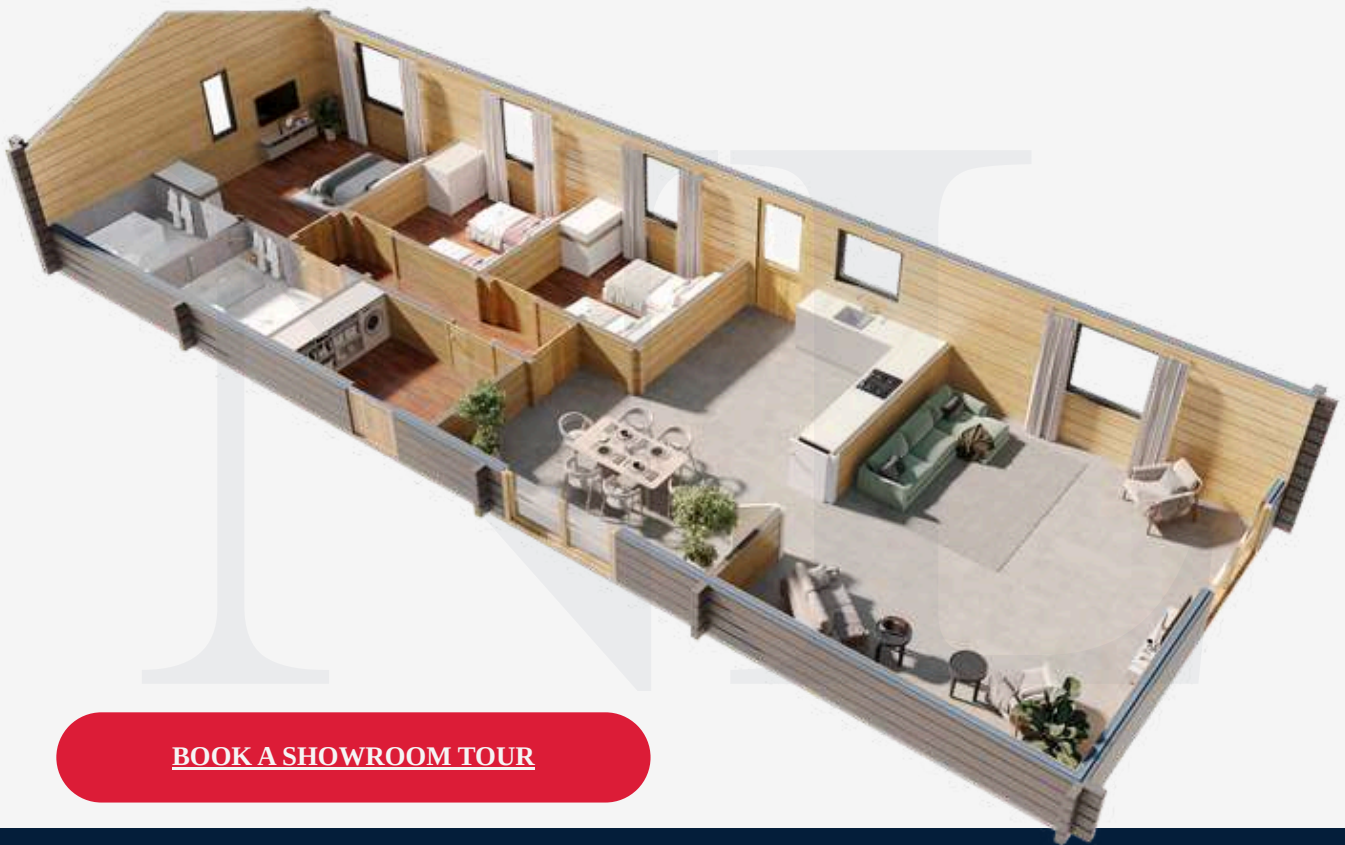
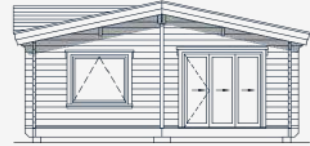
The Mendip is a beautifully proportioned three bedroom design, offering generous sleeping accommodation, a large kitchen / dining room, and expansive separate lounge.



*“Our cabin has given us the perfect next chapter. A cosy, low-maintenance home that keeps us close to family, our hobbies, and the village we’ve always loved, while letting us fully enjoy life with freedom and joy.” — Jenny Gardner, Northamptonshire.*

# MENDIP

ELEVATIONS SCALE 1:200



[BOOK A SHOWROOM TOUR](#)

## *A Life Rooted in Memories*

In the gentle landscapes of Northamptonshire lies a very special log cabin. One that holds not just warmth and comfort, but also a lifetime of love, family, and memories. For Jenny and Dom, their Norwegian Log cabin has become much more than a home. It is the next chapter of a story that began over 50 years ago in the very same village where they still live today. To read Jenny & Dom's story, scan the QR code.



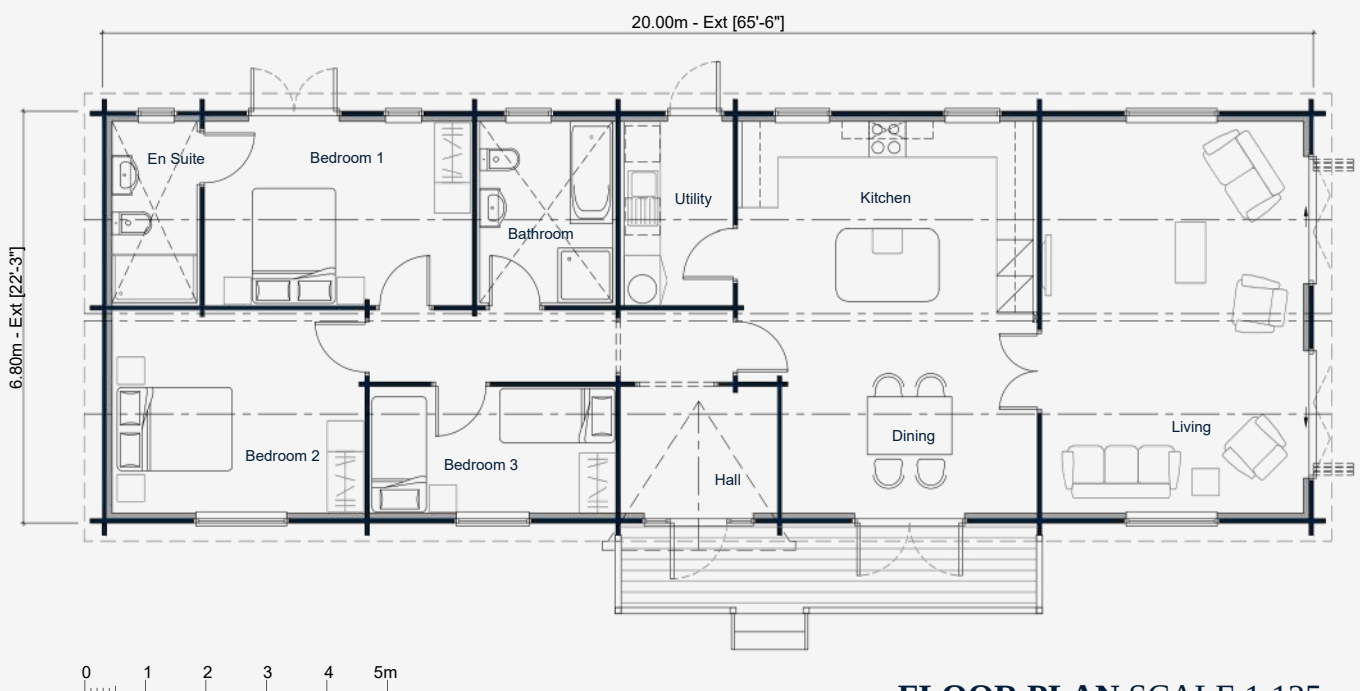
# WINDERMERE

**3 BEDROOM**

136m<sup>2</sup> (1,464 sq ft)



The Windermere is a spacious and beautifully designed residential log home, created for families who want generous living space, comfort and practicality in equal measure.

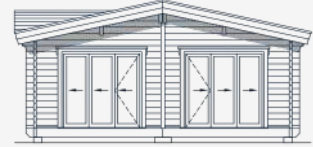


*"Our annexe has completely transformed our lives. It's warm, spacious, and welcoming, giving us independence. It's the perfect home to enjoy life and support the next generation."*

*— Sharon & Paul White, Home Counties.*

# WINDERMERE

ELEVATIONS SCALE 1:200



## *A New Chapter of Joy*

With their daughter expecting her first baby later this year, living just across the garden will take on a beautiful new meaning for Sharon and Paul. "It's not only relaxing living here, almost like being on a permanent holiday, but we'll also be right here to support our daughter," Paul says with anticipation. To read their story, scan the QR code.



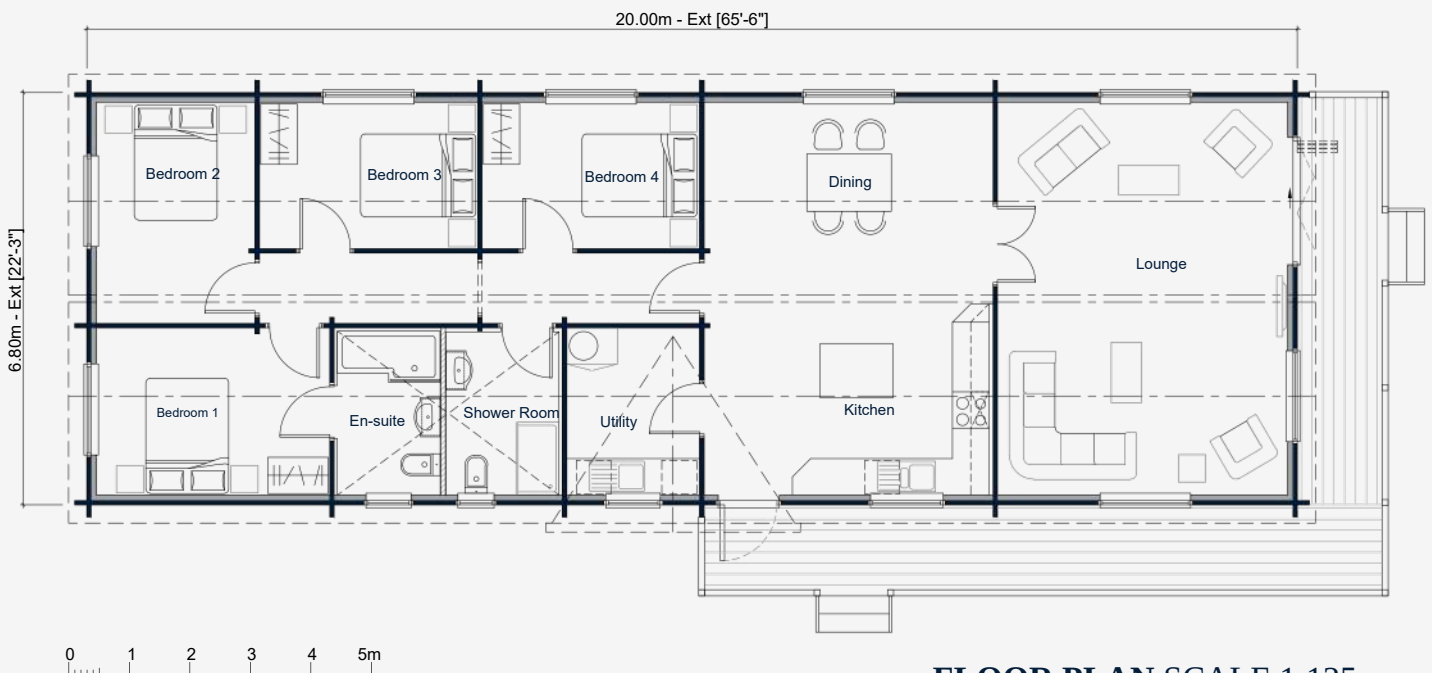
# CAMBRIAN

**4 BEDROOM**

136m<sup>2</sup> (1,464 sq.ft)



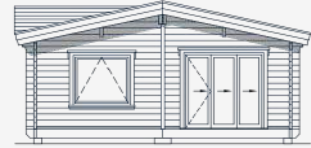
The Cambrian is a spacious four bedroom residential log home designed for families who want maximum living space, comfort and flexibility.



*"If we ever had to leave the farm, I would want another log cabin exactly like this. It is truly difficult to express just how life-changing this has been for us."*  
— Marisa & Jason Atkins, Surrey.

# CAMBRIAN

ELEVATIONS SCALE 1:200



## 28 Year Old Cabin

Nestled in a peaceful corner of her parents' large, leafy garden near Marlow sits Sally Swift's three-bedroom log home. Just a stone's throw away, at the top of the garden, stands her mother Gillian's beloved log cabin, a cherished craft room that Gillian bought from Norwegian Log a remarkable 28 years ago. To read Sally's story, scan the QR code.





NORWEGIAN LOG

*Contemporary Collection*

CELEBRATING LIGHT & SPACE



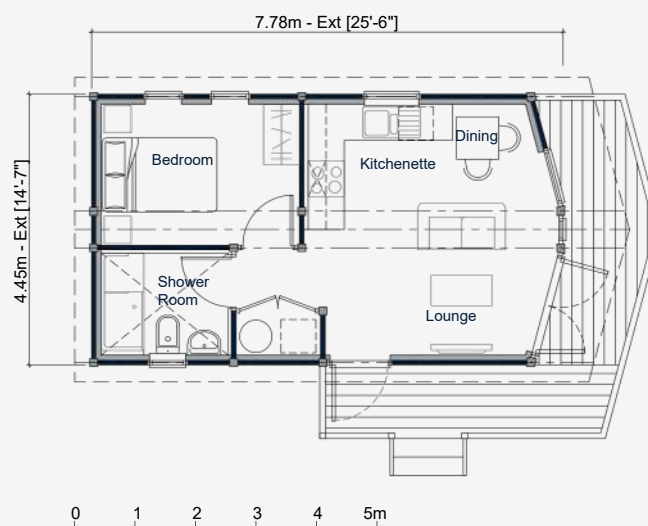
# N BERGEN

**1 BEDROOM**

33.70m<sup>2</sup> (363 sq.ft)



The Bergen offers a thoughtfully arranged one-bedroom layout which includes a bright, open central space as the heart of the home. The bedroom is positioned just off the main living area, while the adjoining shower room sits conveniently between the two zones for ease of everyday living.



**FLOOR PLAN SCALE 1:125**

*"I can pop next door to see my son whenever I like, and we enjoy weekly meals out together. I truly believe this is a wonderful alternative to traditional retirement living."*

*— Freda Helme, Herefordshire.*

ELEVATIONS SCALE 1:125



## Freedom and Family

When her husband passed away three years ago, Freda decided it was time to downsize and initially explored some local retirement properties. "I went to see them in my local town, but they just felt rather soulless," she explains with a thoughtful expression. "So, I went online and found Norwegian Log. In June 2020, we made our way to Reading to see the show homes, and I immediately knew this was exactly what I wanted. I loved the whole feel of them; the team was so accommodating and not at all pushy." To read Freda's story, scan the QR code.



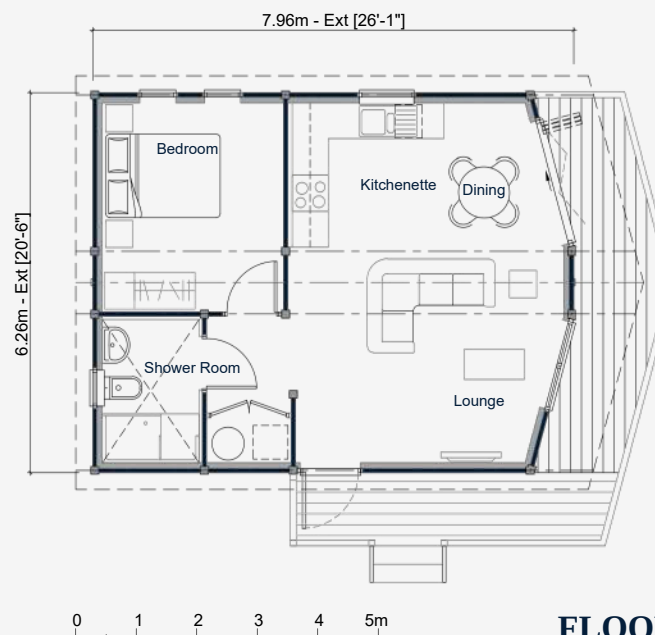
# OSLO

## 1 BEDROOM

48.12m<sup>2</sup> (518 sq.ft)



The Oslo offers an efficient and well-balanced one-bedroom layout designed for comfortable independent living. The floor plan shows a bright central living space that brings together the lounge, dining area and kitchenette, creating an open and practical hub for daily life.



**FLOOR PLAN SCALE 1:125**

*“The build and wood quality were so good... I also really liked their contemporary designs with the extra width as I’d grown up in a house with big open windows and I know how nice that is.”*  
- Wendy Maughan, New Forest.

ELEVATIONS SCALE 1:125



## *Living Local, Dreaming Big*

When their daughter Gemma started her own equestrian business on the family's New Forest farm, Wendy and Steve Maughan wanted her to have independence without leaving the land. A contemporary log cabin from Norwegian Log proved the perfect solution. Gemma now enjoys a cosy home with stunning views, and the family is so delighted, they're planning another cabin for their other daughter and grandson. To read their story, scan the QR code.



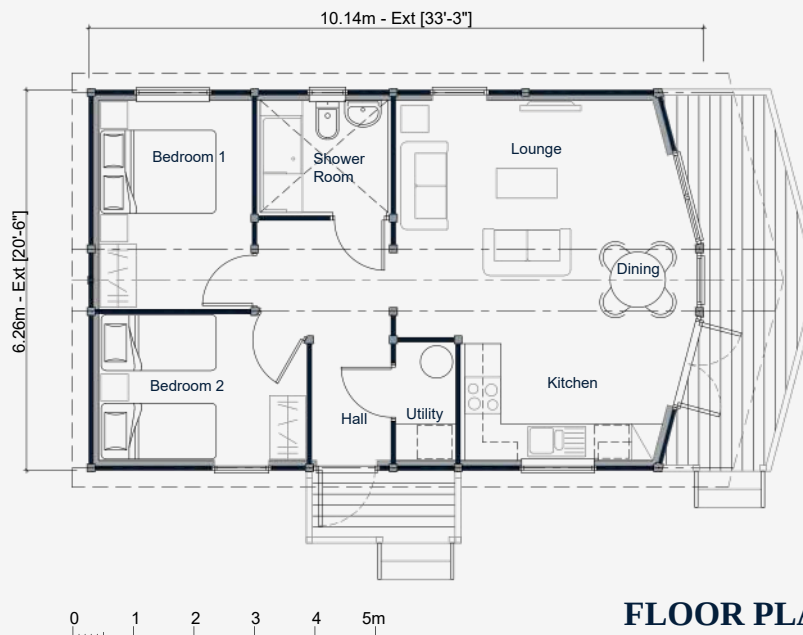
# ROROS

**2 BEDROOM**

61.58m<sup>2</sup> (663 sq.ft)

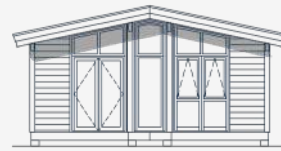


The Roros is a striking contemporary two bedroom log home defined by its sleek angled glass façade and bright open plan interior. Its modern architectural character, with floor to ceiling glazing that fills the living and dining space with natural light.



*"It's simply changed everything for us. We feel like we've had a fresh start, as though we've moved completely, but of course, we haven't. We have the wonderful benefit of still living on our land but in a completely new and beautiful home." - Martin, Surrey.*

ELEVATIONS SCALE 1:125



## Our Accidental Dream Home

Stylishly decorated in the elegant hues of Farrow & Ball, Martin and Tracey's contemporary log home looks like it belongs on the pages of a high-end interiors magazine. The couple have poured their creativity into furnishing and decorating their new Surrey home, transforming it into a luxurious bolthole. To read their story, scan the QR code.



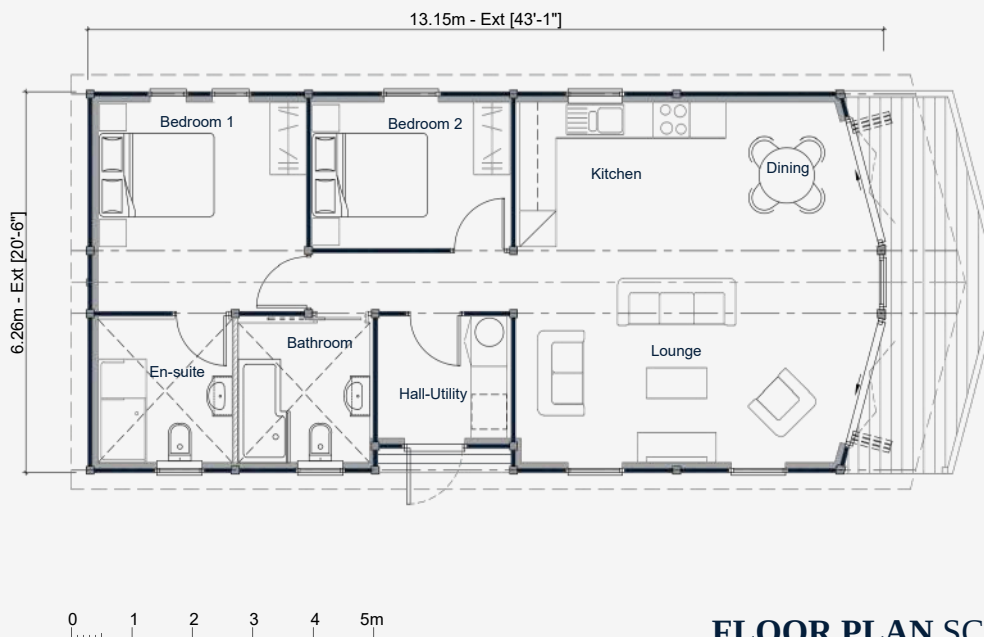
# N STAVANGER

**2 BEDROOM**

79.72m<sup>2</sup> (858 sq.ft)



The Stavanger is a contemporary two-bedroom log home defined by its striking glass fronted design and bright open plan interior. The contemporary façade, glazing, internal layout and room proportions can all be tailored to your land and your lifestyle.

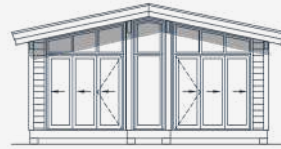


**FLOOR PLAN SCALE 1:125**

*“It’s been amazing,” says Amy. “It feels so homely and the layout is really lovely, it’s such a nice living space. Daisy can wander safely around the whole place and I don’t have to worry. She loves going out onto the decking and playing.” – Coral Dawson, Essex.*

# STAVANGER

ELEVATIONS SCALE 1:125



## Our Happy Home

"I needed some support looking after my husband," explains Coral. "I have carers in but it's nice to have a family member around, especially at the weekends. I started to look at my garden - this area used to be a pond - and I wondered if I could install a cabin. Amy and her little daughter Daisy were looking for a new home and I was looking for company. It just all made sense." To read their story, scan the QR code.

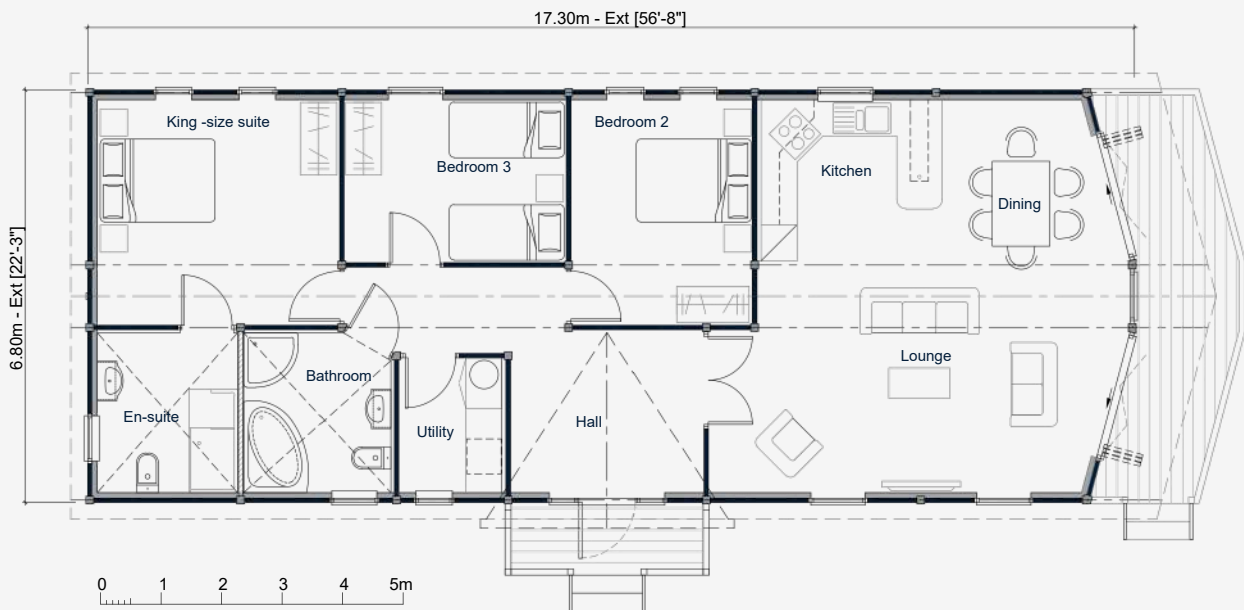


# NARVIK

**3 BEDROOM**  
115.65m<sup>2</sup> (1,245 sq.ft)



The Narvik is a contemporary glass fronted three-bedroom log home designed to offer bright, spacious and modern living. The design features a generous layout featuring three comfortable double bedrooms, a large open plan living and dining room, a fully fitted kitchen, two full bathrooms and a dedicated utility room. With its expansive glazing and clean modern exterior, the Narvik brings together style, practicality and year round comfort.

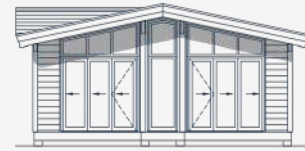


**FLOOR PLAN SCALE 1:125**

*"We did think initially about a bricks and mortar house, but quickly realised that a log home would give us the building we wanted without having to compromise on our lifestyle, so a win, win."  
- Carol Parker, Oxford.*

# NARVIK

ELEVATIONS SCALE 1:125



## Time to Celebrate

Dave and Carol Parker have two special reasons to celebrate – the 30th anniversary of their well-known Oxfordshire farm shop and the delivery of the very first British-made Contemporary transportable home as their ‘forever home’. Nestled between the farm shop’s barns and neighbouring field, the eco-friendly solid log building fits perfectly within its semi-rural surroundings. To read their story, scan the QR code.



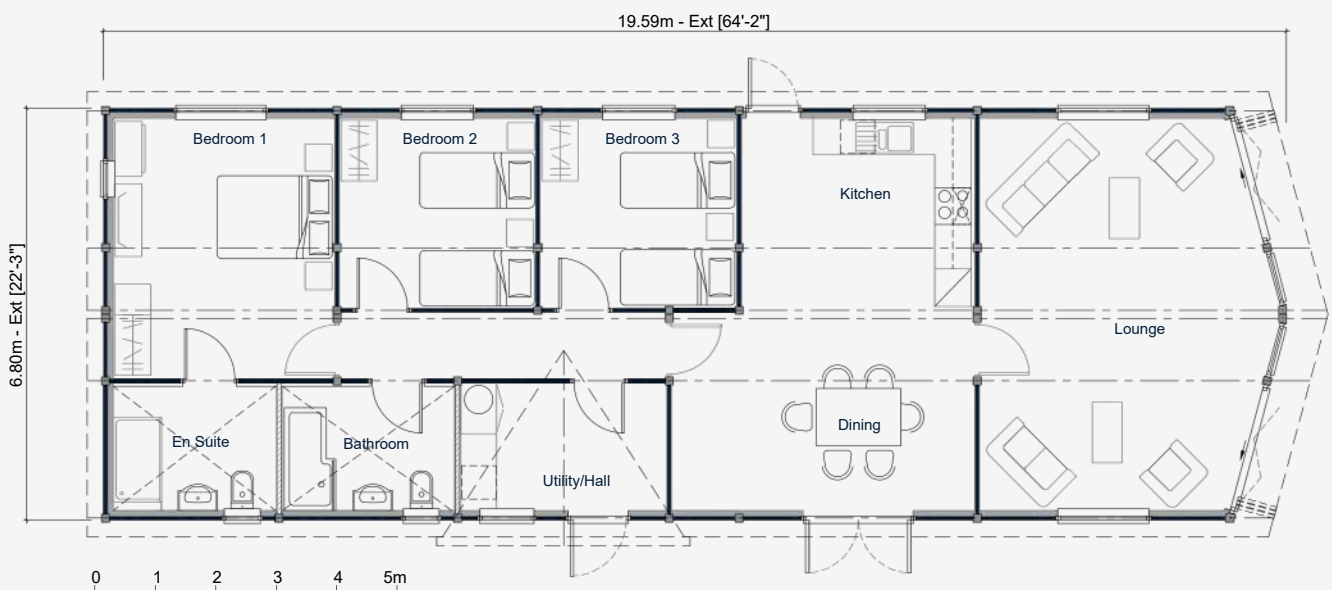
# N TROMSO

**3 BEDROOM**

130m<sup>2</sup> (1,400 sq ft)



The Tromso offers a generous and well-organised three-bedroom layout designed to support comfortable family living or multi-occupant accommodation. The design includes a king size master bedroom suite, two further double bedrooms, spacious lounge, and separate kitchen / dining room.



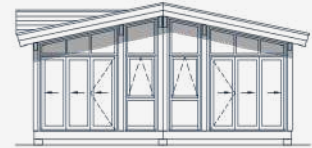
**FLOOR PLAN SCALE 1:125**

*"It's exceeded expectations. When you first think of a cabin, you envisage a shed in the back garden but this is obviously completely different!"*

*- Vicky Melcher, Surrey.*

# TROMSO

ELEVATIONS SCALE 1:125



## Future-Proofing

“When Adam’s family grows up, Mandy and I can move in here and they will move over into the main house. We will have support on our doorstep and won’t have to worry about moving or nursing homes, or any of that stuff,” says Steve. “I grew up in a log cabin in America so it seemed like a natural thing for me. I was approaching 70 and I thought, this just seemed like a sensible thing to do.” To read their story, scan the QR code.



# THE LITTLE LODGE STORY

Nestled in the British countryside just outside Birmingham, a story of love, resilience, and renewed well-being unfolds within the walls of a charming Norwegian Log home. This isn't just a building; it's The Little Lodge – a testament to how the right home can draw a family closer and breathe new life into cherished relationships.

For Mo, the journey to The Little Lodge began during a difficult chapter. Living in Stratford, her health was declining as damp slowly took hold of her ageing park home. The family knew a swift change was essential. While Mo found temporary refuge with her daughter-in-law's son, everyone rallied to find a lasting solution. Traditional options like bungalows felt uninspired, either too expensive or in need of significant renovation.

Then came a glimmer of hope. Guided by instinct, her daughter-in-law discovered the idea of a Norwegian Log cabin. A visit to the Reading show home confirmed a sense of renewed optimism. The perfect spot awaited on the family's farm, a picturesque slice of land ideal for a fresh start. But, as with many heartfelt plans, planning permission soon posed a hurdle: this small parcel technically sat outside the official garden boundary.

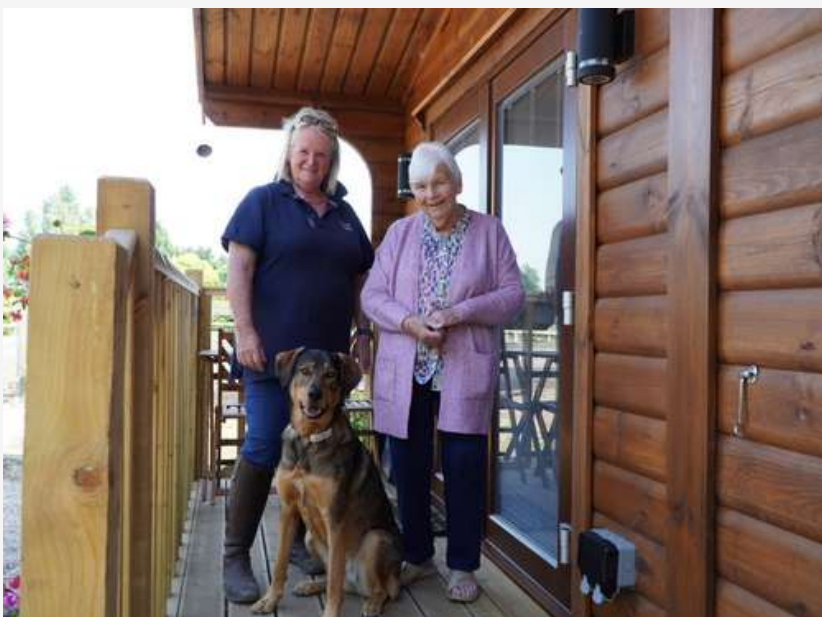
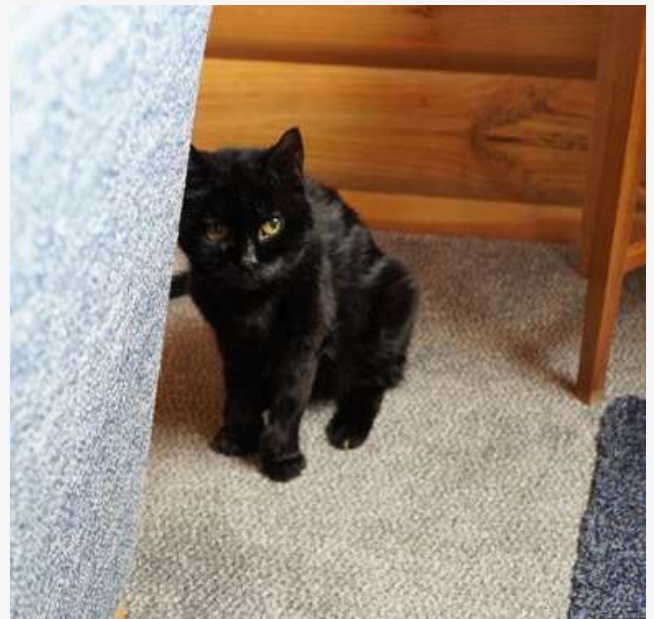


A search through old family boxes began, eventually revealing an aerial photograph showing a thriving vegetable patch exactly where The Little Lodge would stand. That treasured image became the key.

Today, The Little Lodge is more than a home; it's a vital extension of the family's heart. Living just down the road, Mo's daughter-in-law treasures the balance it brings — closeness without crowding. It allows for shared moments like Friday night fish and chips, while still honouring everyone's independence. It's nice to have loved ones close, but with separate living, creating the harmony they sought.

Life in The Little Lodge has brought nothing short of a transformation for Mo. Free from damp, her health has seen a definite and profound improvement. Where she once battled breathing difficulties and recurring pneumonia, she now moves with ease and breathes freely. The natural warmth and gentle embrace of the log cabin have worked quiet miracles. Mo often describes a different body feeling, a calm in which her body seems to relax. She even delights in the cabin's subtle timber aroma, a scent visitors frequently notice.

The story of The Little Lodge is a touching reminder of how a thoughtfully crafted home can nurture well-being, strengthen family bonds, and create a haven that feels both healing and deeply loved.



# TAKE A LOOK INSIDE

Beyond the taps and timber, our homes are filled with stories. Stories of lives lived, memories made, and futures built. We understand that finding the right supplier is more than a transaction; it's about finding your home. Scan the QR code to hear directly from our owners, and discover the real heart of our community. Real stories, real people, real reassurance.





# A HOME AT THE HEART OF THE FARM

For Tom and Chloe, life on their red-deer farm in rural Oxfordshire was full of joy – but also a constant, exhausting pull. Every five-to-ten-minute trip between home and the farm felt heavier than the distance itself. Each drive was a reminder that they weren't quite where they needed to be.

They describe it as living in two places at once: the place where they slept and the place where their lives truly happened.

The worry never switched off.  
The responsibility never paused.  
And the land they loved was always just far enough away to feel out of reach.



When they discovered that a Norwegian Log home could offer them the rare balance of practicality and comfort, something beautiful, solid, and instantly liveable, everything shifted. For the first time, the prospect of a home that worked with their lifestyle, not against it, felt real.

Walking into the show home in Reading, they saw more than a house.

They saw possibility.

They saw their future slowing down.

They shaped the cabin around their lives, around muddy boots, loyal dogs, chilly mornings, and long summer evenings. The open-plan space, bathed in natural light, invites calm into each day. Wide bifold doors frame the sunrise and sunset like a daily reminder of why they chose this life in the first place.

Outside, a wood-fired hot tub and fire pit overlook the fields. It's where they sit after long days, letting the quiet roll in. It's where the job ends and home begins.

Inside, warm timber, underfloor heating, and thoughtful design create a sense of refuge. Not fancy, not fussy, just deeply comforting

Now, when they look out across the fields, they see the herd that depends on them, calm, close, and safe. They see the future of their business growing stronger. And they see the life they worked so hard for finally aligning.

Their cabin isn't just a home.

It's the moment their life and their land finally met.

It's belonging – made real.



## NORWEGIAN LOG

# Peace of Mind

### WARRANTY AND SERVICE PLAN FOR UP TO 25 YEARS

For over 40 years, we've been crafting log homes to the highest standards, quality we proudly stand behind.

To ensure your building will continue to serve for generations to come, we offer a structured Service Plan that makes it easy to extend warranty coverage up to 25 years. Like any premium property, consistent maintenance protects both appearance and performance.

The Service Plan includes expert inspections every two years to identify routine maintenance needs, such as applying a high-quality microporous oil that preserves the logs' natural lustre and shields them from UV light, wind, and rain.

Owners receive clear, actionable recommendations and a plan for any necessary maintenance. Our goal is to support the long-term preservation, value, and enjoyment of every log cabin.







*Meet the Team*



## YOUR PROJECT, EXPERTLY GUIDED

Our commitment to excellence extends to every facet of your project. Unlike some, we never delegate to external agencies. Your vision is entrusted solely to our meticulously vetted, in-house team: seasoned sales consultants, master craftsmen, experienced operations managers, and dedicated customer experience professionals.





## SUSTAINABLE, SOPHISTICATED, SMART.

In an era of rising energy costs, efficiency has never been more important. Our log homes—meticulously crafted with Norwegian design principles—seamlessly blend robust log construction with advanced insulation technologies. This synergy ensures optimal thermal performance, keeping interiors cool in the summer and warm and inviting throughout the winter, all while significantly reducing running costs.

Our exclusive partnership with a leading Norwegian manufacturer further strengthens our commitment to sustainability. Their rigorous replanting policies ensure that more trees are planted than harvested, safeguarding the natural beauty of our landscapes for generations to come.

## OUR PROMISE TO YOU

Our reputation is built on unwavering principles. Every home we craft reflects quality, integrity, and timeless beauty. Using sustainably sourced, slow-grown Scandinavian timber, we deliver with care and ethical commitment, building lasting client relationships through transparency and trust.

Our experienced in-house teams ensure exceptional craftsmanship and guide clients through every stage — from design and planning to final fit out. We navigate planning permissions with precision and uphold a strong commitment to sustainability, using renewable materials and energy-efficient designs to reduce environmental impact and promote healthier living.

Reliability is at our core, backed by decades of proven performance and comprehensive warranties. Understanding that homebuilding is deeply personal, we offer bespoke designs and dedicated support to help families create spaces where they can thrive. With transparent communication and adaptable solutions, we make sure every client feels informed, supported, and confident.





## BOOK YOUR PRIVATE SHOWROOM TOUR

We warmly invite you to experience the quality of our log homes firsthand. We believe that seeing our work in person is the best way to appreciate the enduring beauty, warmth of a Norwegian Log cabin.

Visit our headquarters in Reading, Berkshire, and step inside fully fitted two- and three-bedroom log cabins, as well as our range of contemporary garden rooms.

These showrooms will allow you to see the versatility, functionality and aesthetic appeal of a Norwegian Log home.

During your visit, our knowledgeable specialists and experienced team leaders will be on hand to welcome you and answer any questions.

They are passionate about helping you achieve your dream home and can provide valuable guidance on the design and construction process.

To arrange your visit, please contact us on **0118 966 9236** or email **[sales@norwegianlog.co.uk](mailto:sales@norwegianlog.co.uk)**

*Norwegian Log Team*



[norwegianlog.co.uk](http://norwegianlog.co.uk)



[sales@norwegianlog.co.uk](mailto:sales@norwegianlog.co.uk)



0118 966 9236

# A MESSAGE FROM OUR CEO, EDWARD TAYLOR

It has been a genuine pleasure introducing you to Norwegian Log. I have the privilege of leading an exceptionally dedicated team whose commitment to crafting high-quality log cabins builds upon a strong foundation established since the 1980s. This dedication is a source of immense pride.

Choosing a supplier for your new home is a significant decision - this is a major milestone in life. We understand that this process is driven by both practical and personal considerations, and our team approaches every project with the aim to serve as a trusted partner.

What truly sets Norwegian Log apart extends beyond our heritage, quality, and sustainability – it is, above all, the calibre, expertise, and dedication of the people behind every project.



I am consistently impressed by our team's expertise, meticulous attention to detail, and genuine commitment to creating log cabins that enhance the lives of our clients. Operating from our headquarters in Reading, they serve families and businesses across the country with dedication and professionalism.

We are deeply invested in helping to bring your project to fruition, and delivering a warm, comfortable, and robust log home which will continue to serve for generations to come.

Thank you for reading this far, and I hope we'll soon welcome you to view our show homes.

With sincere appreciation,

**EDWARD TAYLOR**  
**CEO, NORWEGIAN LOG**



THE HOME YOUR HEART HAS  
BEEN WAITING FOR.

# NORWEGIAN LOG

SINCE 1984

NORWEGIAN LOG, 230 LONDON ROAD, READING, BERKSHIRE, RG6 1AH

0118 966 9236 / SALES@NORWEGIANLOG.CO.UK