

Residential and Holiday Log Cabins



NorwegianLog

Contents

The Norwegian Log Effect	3	Our team	16
Two ways to enjoy The Norwegian Log Effect	6	What makes Norwegian Log buildings so special?	18
Your guide to applications	8	Testimonial - Our forever home	21
Residential log cabins	13	Extendable five-year warranty & service plan	50
Holiday cabins	14	Customer service	51

Plans, elevations & dimensions

Timeless Traditional

ONE BEDROOM

Kelso	7.00m x 4.13m	28.91m ² (311 sq ft)	25
Melrose	7.00m x 5.94m	41.58m ² (447 sq ft)	26

TWO BEDROOMS

Cresta	10.66m x 4.12m	43.90m ² (473 sq ft)	27
Brecon	10.36m x 5.18m	51.76m ² (557 sq ft)	28
Sherwood	9.15m x 5.94m	54.30m ² (585 sq ft)	29
Alpine	10.36m x 5.94m	59.31m ² (638 sq ft)	30
Malvern	12.19m x 5.94m	72.40m ² (780 sq ft)	31

THREE BEDROOMS

Lomond	11.58m x 5.94m	66.60m ² (717 sq ft)	32
Nordic	13.41m x 5.94m	79.65m ² (857 sq ft)	33
Pennine	14.83m x 5.94m	88.00m ² (948 sq ft)	34
Grampian	15.85m x 5.94m	94.15m ² (1,013 sq ft)	35
New Highland	16.62m x 5.94m	98.72m ² (1,062 sq ft)	36
Wicklow	17.03m x 5.94m	101.16m ² (1,089 sq ft)	37
Mendip	19.62m x 6.42m	125.96m ² (1,356 sq ft)	38
Windermere	19.62m x 6.42m	125.96m ² (1,356 sq ft)	39

FOUR BEDROOMS

Cairngorm	16.62m x 6.42m	106.70m ² (1,148 sq ft)	40
Cambrian	19.62m x 6.42m	125.96m ² (1,356 sq ft)	41

Stylish Contemporary

ONE BEDROOM

Bergen	7.00m x 4.13m	30.00m ² (323 sq ft)	43
Oslo	7.00m x 5.94m	43.86m ² (472 sq ft)	44

TWO BEDROOMS

Røros	9.15m x 5.94m	56.60m ² (610 sq ft)	45
Stavanger	12.19m x 5.94m	73.10m ² (787 sq ft)	46

THREE BEDROOMS

Lillehammer	13.41m x 6.42m	87.20m ² (938 sq ft)	47
Narvik	16.27m x 6.42m	107.10m ² (1,152 sq ft)	48
Kristiansand	19.62m x 6.42m	125.16m ² (1,347 sq ft)	49

Show buildings

We have show buildings in Reading available for you to view.

By appointment only: please book your visit on **0118 966 9236**.

Family and Granny Annexes With Full Fit Out Available. See page 13.

Accessibility compliance: All our log homes have floor plans that are fully compliant with DDA requirements for disabled access. This makes them ideal granny annexes without the need for further modification.

THE Norwegian Log

• EFFECT •

It's warm and it's cosy, it's solid and it's quiet. There's a fragrance reminiscent of the Scandinavian forest and summer evenings. And your imagination starts to take you places. You imagine a wood burner, a desk perhaps, or simply a place for quiet thought.

Our show home is over a quarter of a century old, yet customers still say it looks and feels brand-new. That's the quality of the workmanship, and the materials. When you step into a Norwegian Log building, you're stepping into a feeling.

And just like our buildings, it's one that will last.







Two ways to enjoy The Norwegian Log Effect

We offer two contrasting ways for you to enjoy The Norwegian Log Effect: Timeless Traditional and Stylish Contemporary. Each style is available in a huge range of standard designs. You can also use these designs as starting points to plan the bespoke Norwegian Log building that's perfect for you.





Timeless Traditional

Unmistakable Scandinavian log style

Our unique interlocking log construction makes your new home welcoming, warm and friendly, inside and out. And gives it all the strength and durability you expect. The key to our authenticity? Our Timeless Traditional buildings are manufactured exclusively for us by a leading Norwegian supplier. Plans for our Timeless Traditional range start on page 24.



Stylish Contemporary

Traditional log virtues with a fresh, new look

Our own patented log jointing system enables us to exploit wholly new design opportunities in our Stylish Contemporary range. You can enjoy fully glazed walls, for example, and buildings that fit neatly into a corner of your site. We manufacture this unique range in our own UK factory. Plans for our Stylish Contemporary range start on page 42.

Your guide to applications

Residential log cabins

Comfortable homes with up to four bedrooms, installed quickly and cleanly:

- **In your garden, for family members – the perfect granny annex, for example**
- **For rural employers, farmers and smallholders – attractive accommodation for staff and family**

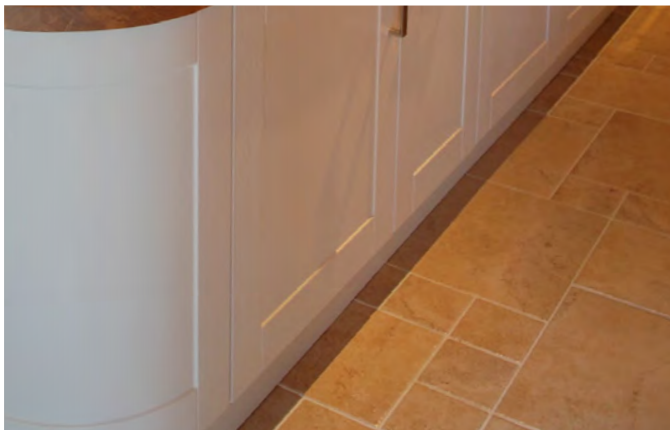
Read more about our residential log cabins on page 13.

Holiday cabins

Spacious one- to four-bedroom holiday cabins for private owners and developers:

- **Fully compliant with the Caravan Act**
- **Year-round use with low running costs**

Read more about our holiday cabins on page 14.









Residential log cabins

Convenient. Comfortable. Cost-effective. And installed so quickly and cleanly you'll find it hard to believe.

Your cabin will have an indefinite lifespan with only minimal maintenance, and comes with the assurance of an extendable five-year warranty (see page 50 for details).

For rural enterprises

Harmonising effortlessly with the rural environment, our cabins offer quick, comfortable accommodation for you, your family or your staff. For planning purposes, they comply fully with:

- **Caravan Act**
- **NPPF paragraph 79**
- **Conditions in Certificates of Lawful Use for temporary dwellings**

For your family at home

Our cabins offer ideal extra accommodation for family members at home. All our log homes have floor plans that meet DDA guidelines for disabled access. This makes them ideal granny annexes, which will save on care costs and provide reassuring closeness to the family. You won't need Planning Permission in most cases, and we'll apply for a Certificate of Lawful Use on your behalf to confirm that.

Family and Granny Annexes with full fit out

We offer bespoke full fit out on all of the log homes in our range where planning, design and installation can be included. However, we have created a separate Family and Granny Annex brochure which outlines our 8 most popular packages with full pricing. For details of our full fit out packages, please visit the website to download the brochure, or call our sales line on 0118 966 9236.

Plans for residential log cabins start on page 23.

Holiday cabins

Our log holiday cabins are designed for private owners as well as leisure developers

They comply fully with the Caravan Act, with all the advantages (exemption from Building Regulations, etc.) of a caravan but not their drawbacks, such as rapid depreciation.

Our range spans from one to four bedrooms, in standard designs that have evolved with input from our clients, over many years. Our bespoke design service is perfect for dealing with any specific requirements too.

Our holiday cabins harmonise beautifully with rural and coastal environments. They have an indefinite lifespan with only minimal maintenance, and come with the assurance of an extendable five-year warranty (see page 50 for details).

For leisure developers

Our holiday cabins offer high letting potential, with visibly higher quality that generates repeat bookings. We install much more quickly than with conventional construction methods, with minimal disruption to your site. We have capacity for up to 100 units.





Our team

We are the team that creates the Norwegian Log Effect, united around a handful of shared values.

Respect for millennia of traditional log construction.

Pride in the skill of our workforce and in our own patented contribution to modern log technology.

Admiration for our natural, sustainable log raw material.

Finally, **determination** to ensure your delight when you first occupy your Norwegian Log building – and your enduring satisfaction in the years to come.



What makes Norwegian Log buildings so special?



Visibly higher quality

No cladding or boarding – just solid log throughout for strength, durability and warmth.



Indefinite lifespan

Indefinite lifespan with only minimal maintenance. 5-year warranty as standard and extendable up to 25 years.



Delivery within weeks

Manufactured to your specific requirements, yet usually just weeks from ordering to completion.



Wide range and high capacity

From one to one hundred units, log homes to swimming pool buildings and many more. Tailored for you.



Proven interlocking system

Strong, rigid, draught-free buildings due to our precision-cut interlocking system.



Minimal access requirements

Exploit sites where access is difficult; the components can be carried through an opening the size of a doorway.







TESTIMONIAL

A 'Forever Home' for Dave & Carol

"Our farm shop is constructed from wood and so we already knew how well insulated these natural buildings are and how well they perform. We did think initially about a bricks and mortar house, but quickly realised that a log home would give us the building we wanted without having to compromise on our lifestyle, so a win, win. Another reason we wanted to opt for a log building was to tie in with the other buildings on the site, our shop and barns.

It was so exciting seeing it delivered. Everybody loves it. It blends in so well and is very low key. I'm constantly showing customers around and I've had nothing but compliments. In fact, several of my friends have been tearful, they've loved it so much.

We've made sure our new home has been designed for the future so we've included a walk-in shower. There are no steps and we can easily install access ramps. It's our forever home!"



Plans, elevations & dimensions

These pages show the plans and elevations for our most popular designs, with all the vital dimensions you need.

Choose from Timeless Traditional (up to four bedrooms) and Stylish Contemporary (up to three bedrooms).

These standard models can be just the beginning – the springboard for your own ideas. Our design team will be happy to work with you to make your own bespoke home a reality.

Family and Granny Annexes with full fit out packages

We offer bespoke full fit out on all of the log homes in our range where planning, design and installation can be included. However, some of our most popular designs are available as a full fit out package. For full details please see our Family and Granny Annex brochure and price list on the website or call 0118 966 9236 and speak to one of our experts.

Timeless Traditional p24

Stylish Contemporary p42

Timeless Traditional plans & elevations

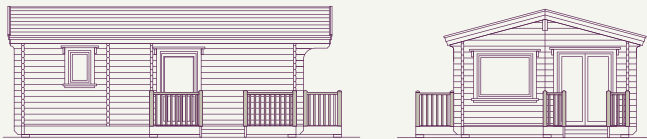
Unmistakable Scandinavian log style



Kelso

1 Bedroom

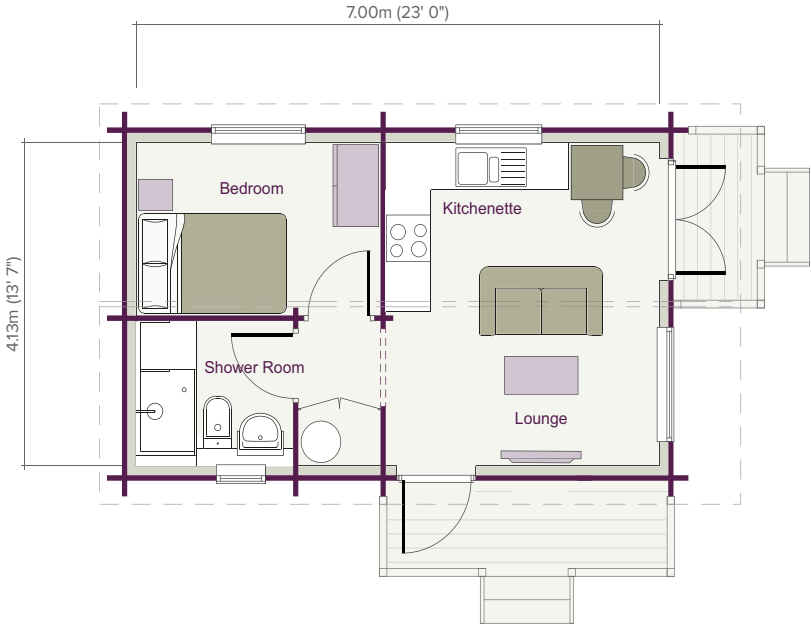
28.91m² (311 sq ft)



ELEVATIONS SCALE 1:200

TIMELESS TRADITIONAL

FLOOR PLAN SCALE 1:100



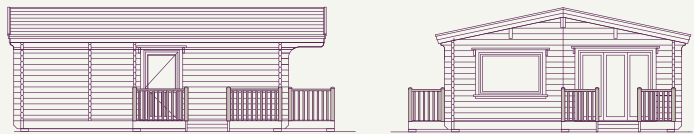
ROOM DIMENSIONS

Living Area	3.66m x 4.13m	(12' 0" x 13' 7")	Bathroom	2.0m x 1.85m	(6' 7" x 6' 1")
Bedroom	3.27m x 2.0m	(10' 9" x 6' 7")			

Melrose

1 Bedroom

41.58m² (447 sq ft)



ELEVATIONS SCALE 1:200

TIMELESS TRADITIONAL

FLOOR PLAN SCALE 1:100



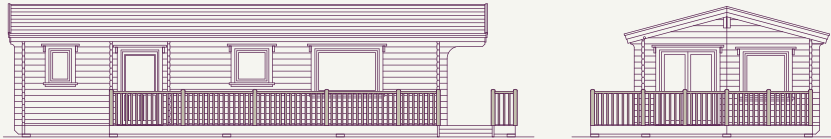
ROOM DIMENSIONS

Living Area	3.93m x 5.94m	(12' 11" x 19' 6")
Bedroom	3.00m x 3.45m	(9' 10" x 11' 4")
Bathroom	1.73m x 2.43m	(5' 8" x 7' 11")

Cresta

2 Bedroom

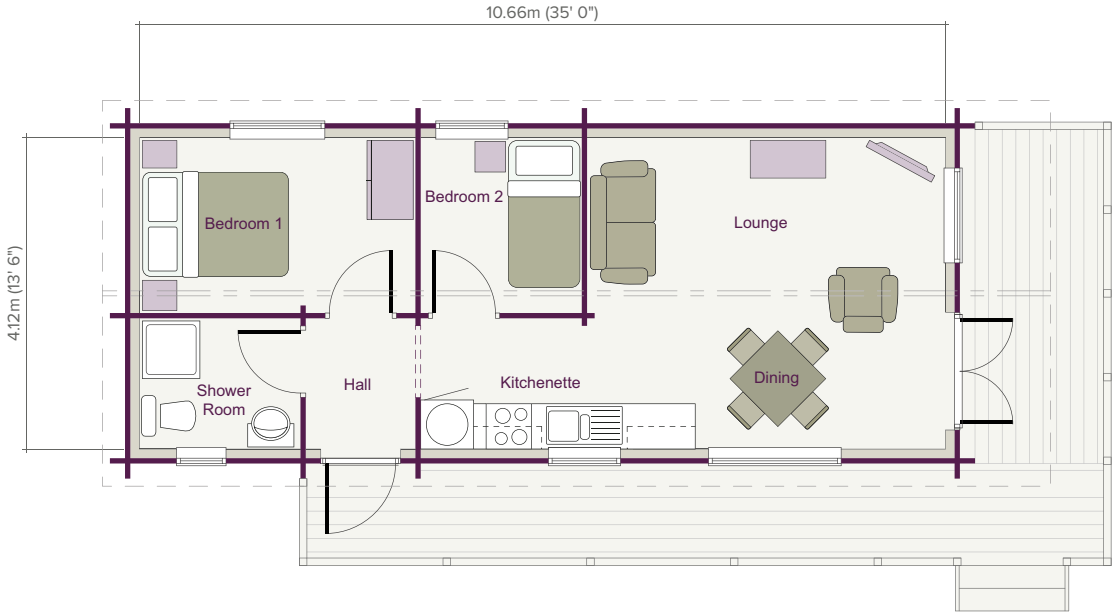
43.90m² (473 sq ft)



ELEVATIONS SCALE 1:200

TIMELESS TRADITIONAL

FLOOR PLAN SCALE 1:100



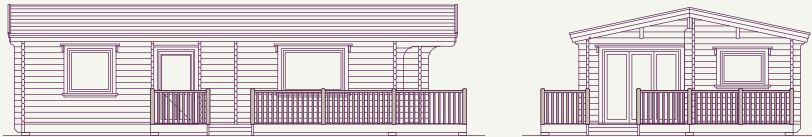
ROOM DIMENSIONS

Living Area	4.74m x 4.12m	(15' 6" x 13' 6")	Bedroom 2	2.13m x 2.32m	(7' 0" x 7' 7")
Entrance Hall	1.45m x 1.73m	(4' 9" x 5' 8")	Shower Room	2.13m x 1.73m	(7' 0" x 5' 8")
Bedroom 1	3.65m x 2.32m	(12' 0" x 7' 7")			

Brecon

2 Bedroom

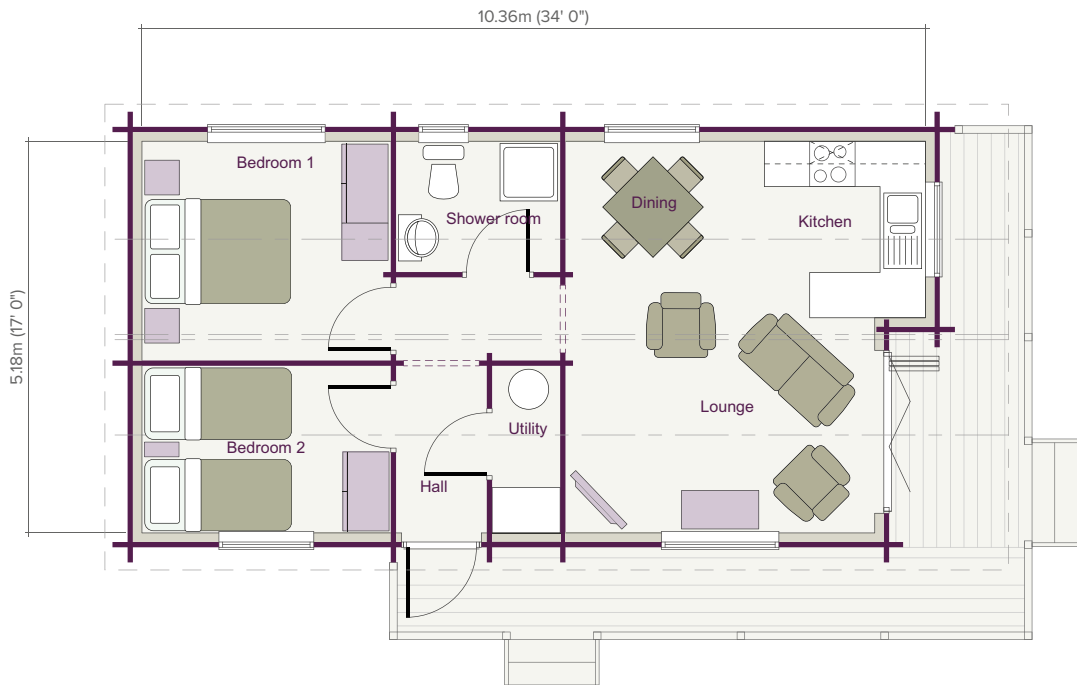
51.76m² (557 sq ft)



ELEVATIONS SCALE 1:200

TIMELESS TRADITIONAL

FLOOR PLAN SCALE 1:100



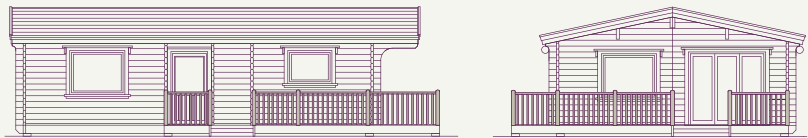
ROOM DIMENSIONS

Living Area	4.09m / 4.76m x 5.18m (13' 5" / 15' 7" x 17' 0")	Entrance Hall	1.20m x 2.21m	(3' 11" x 7' 3")	Bedroom 2	3.29m x 2.21m	(10' 10" x 7' 3")
		Utility	0.90m x 2.21m	(2' 11" x 7' 3")	Shower Room	2.17m x 1.73m	(7' 1" x 5' 8")
		Bedroom 1	3.29m x 2.90m	(10' 10" x 9' 6")			

Sherwood

2 Bedroom

54.30m² (585 sq ft)

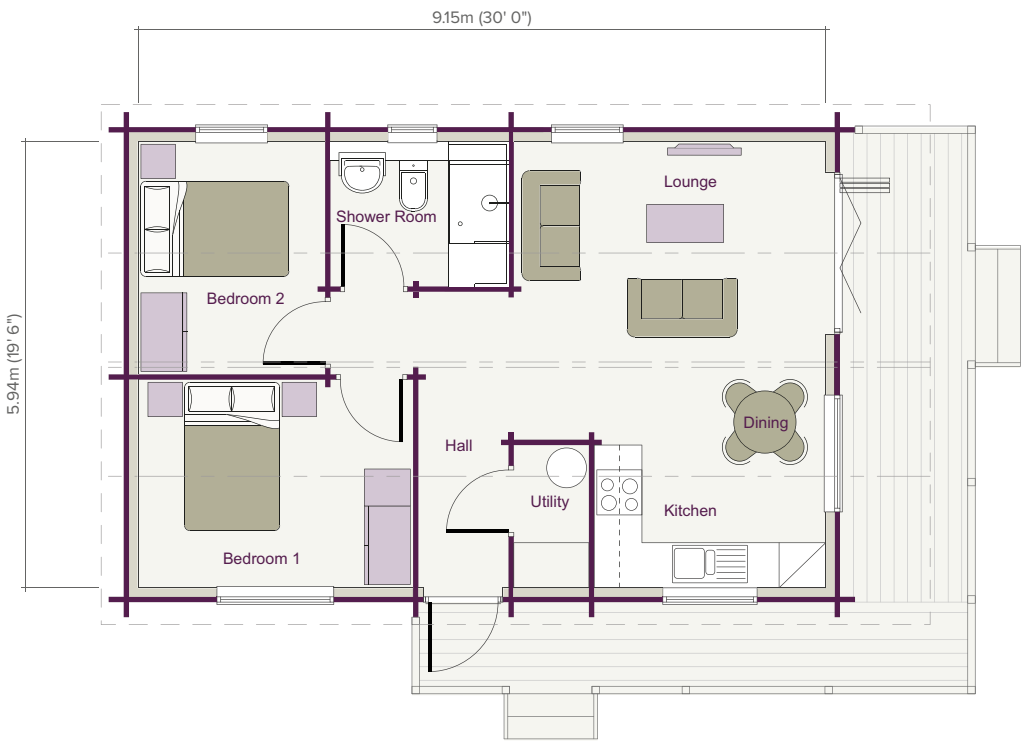


ELEVATIONS SCALE 1:200

TIMELESS TRADITIONAL

Deluxe 6.8m (22' 3") external width version available. Please ask for details.

FLOOR PLAN SCALE 1:100



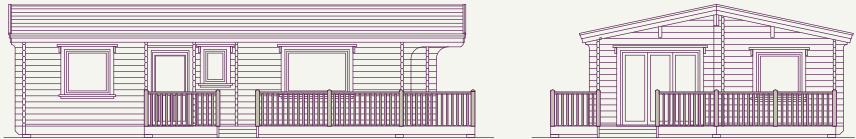
ROOM DIMENSIONS

Living Area	4.15m / 3.08m x 5.94m (13' 7" / 10' 1" x 19' 6")	Entrance Hall	1.20m x 2.03m	(3' 11" x 6' 8")	Bedroom 2	2.49m x 3.10m	(8' 2" x 10' 2")
		Utility	1.00m x 2.03m	(3' 3" x 6' 8")	Bathroom	2.37m x 1.93m	(7' 9" x 6' 4")
		Bedroom 1	3.66m x 2.77m	(12' 0" x 9' 1")			

Alpine

2 Bedroom

59.31m² (638 sq ft)

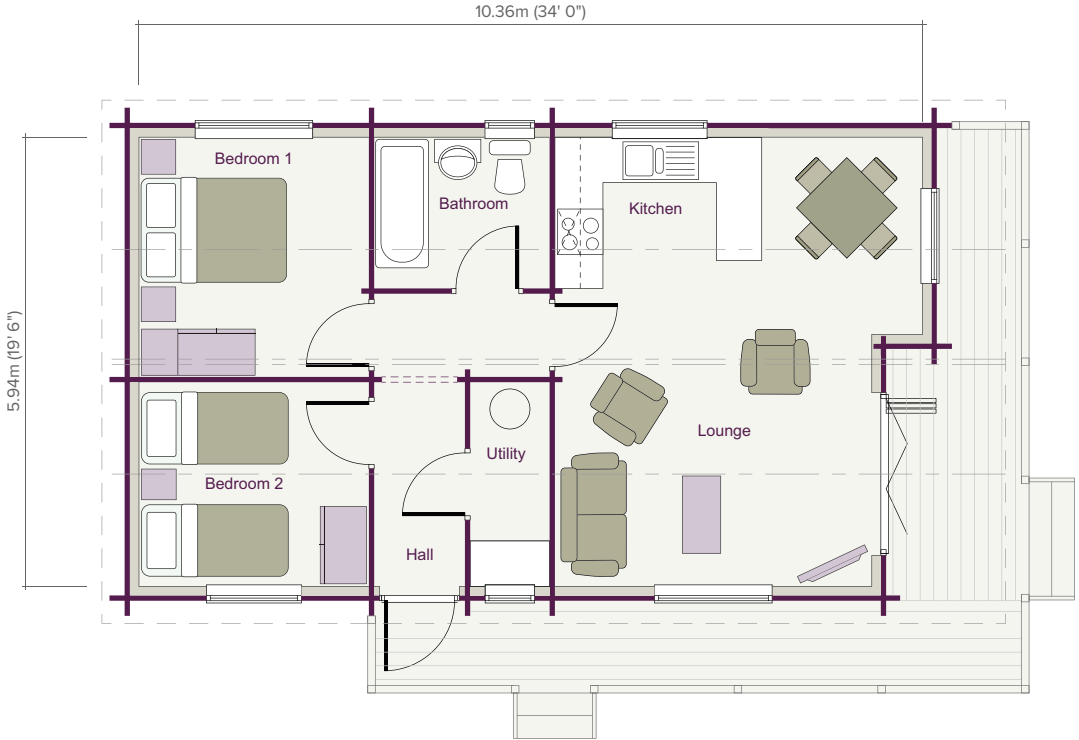


ELEVATIONS SCALE 1:200

TIMELESS TRADITIONAL

Deluxe 6.8m (22' 3") external width version available. Please ask for details.

FLOOR PLAN SCALE 1:100



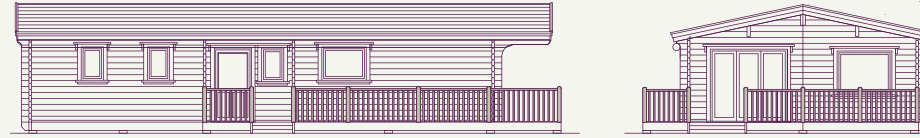
ROOM DIMENSIONS

Living Area	4.19m / 4.86m x 5.94m (13' 9" / 16' 0" x 19' 6")	Entrance Hall	1.20m x 2.70m	(3' 11" x 8' 10")	Bedroom 2	3.04m x 2.70m	(10' 0" x 8' 10")
		Utility	1.05m x 2.70m	(3' 5" x 8' 10")	Bathroom	2.32m x 2.00m	(7' 7" x 6' 6")
		Bedroom 1	3.04m x 3.17m	(10' 0" x 10' 5")			

Malvern

2 Bedroom

72.40m² (780 sq ft)

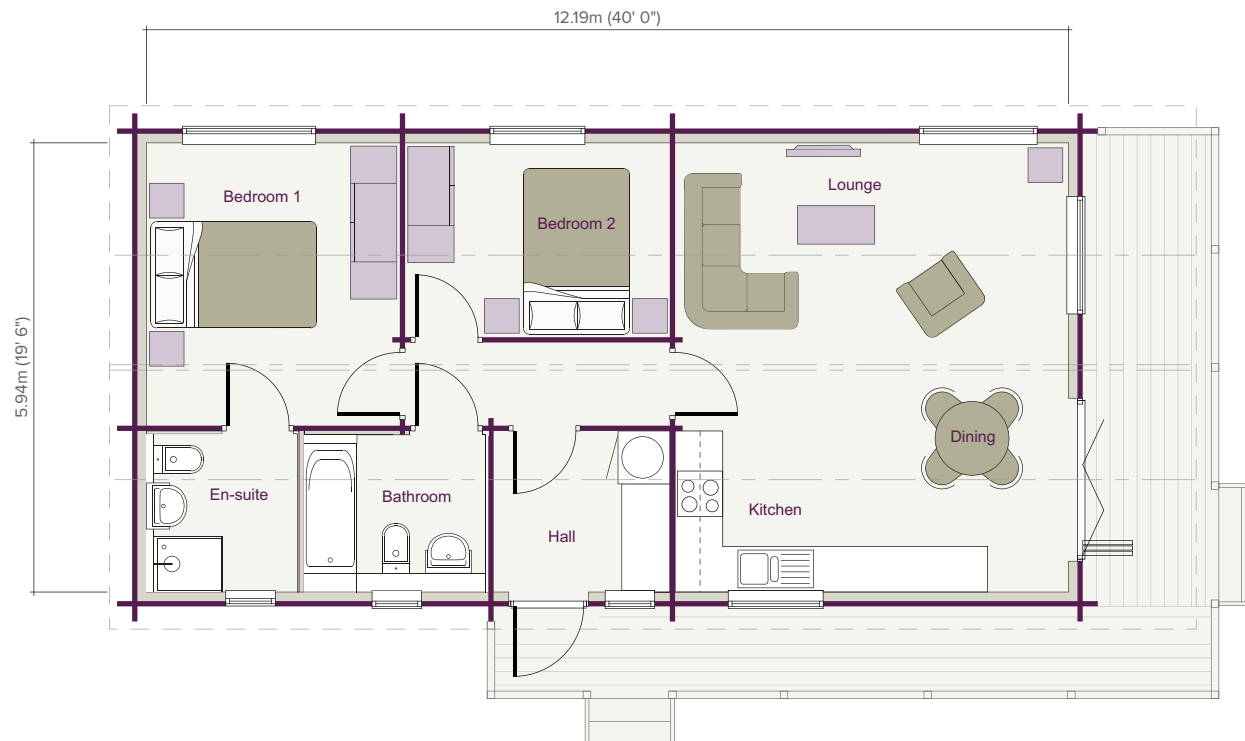


ELEVATIONS SCALE 1:200

TIMELESS TRADITIONAL

Deluxe 6.8m (22' 3") external width version available. Please ask for details.

FLOOR PLAN SCALE 1:100



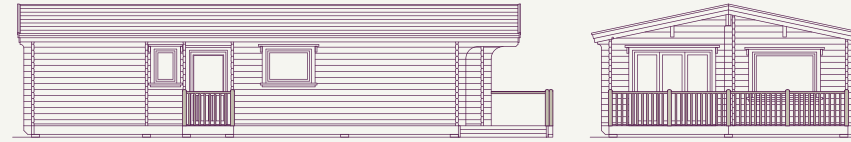
ROOM DIMENSIONS

Living Area	5.20m x 5.94m	(17' 1" x 19' 6")	En-suite	2.00m x 2.13m	(6' 7" x 7' 0")
Hall/Utility	2.33m x 2.13m	(7' 8" x 7' 0")	Bedroom 2	3.50m x 2.57m	(11' 6" x 8' 5")
Bedroom 1	3.35m x 3.74m	(11' 0" x 12' 3")	Bathroom	2.42m x 2.13m	(7' 11" x 7' 0")

Lomond

3 Bedroom

66.60m² (717 sq ft)

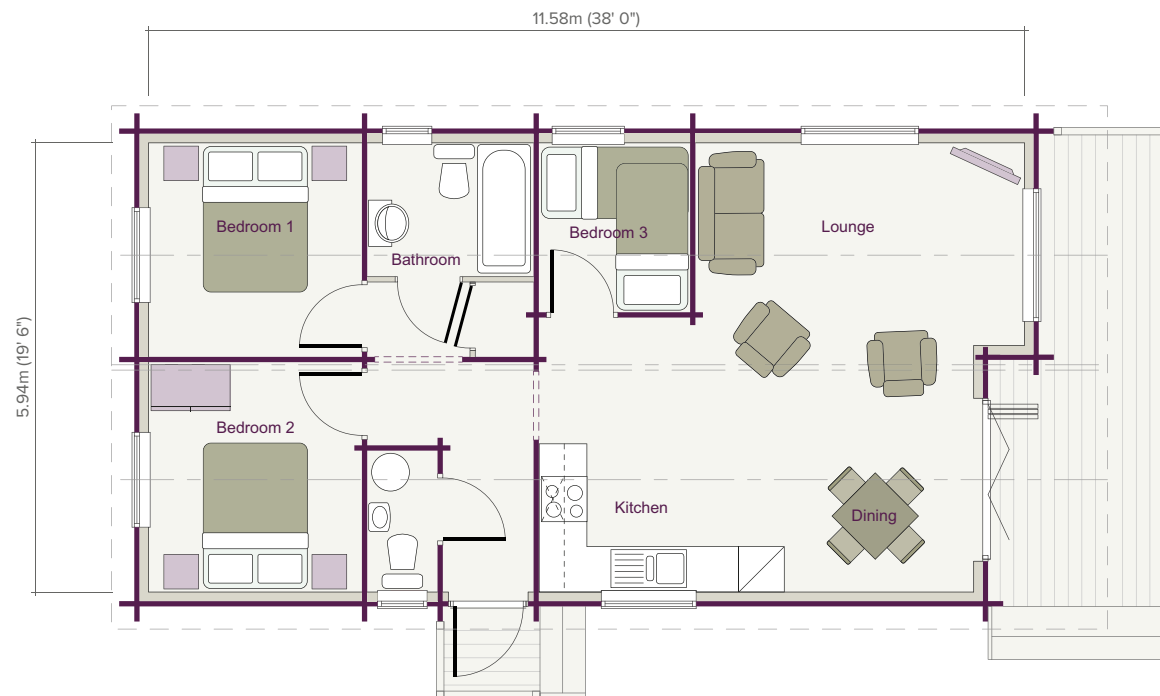


ELEVATIONS SCALE 1:200

TIMELESS TRADITIONAL

Deluxe 6.8m (22' 3") external width version available. Please ask for details.

FLOOR PLAN SCALE 1:100



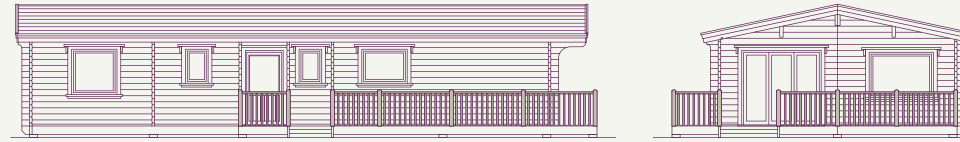
ROOM DIMENSIONS

Living Area	5.75m / 4.35m x 5.94m (18' 10" / 14' 3" x 19' 6")	W/C	0.93m x 1.87m (3' 1" x 6' 2")	Bedroom 3	2.00m x 2.24m (6' 7" x 7' 4")
Entrance Hall	1.20m x 3.04m (3' 11" x 10' 0")	Bedroom 1	2.82m x 2.82m (9' 3" x 9' 3")	Bathroom	2.20m x 1.76m (7' 3" x 5' 9")
		Bedroom 2	2.82m x 3.04m (9' 3" x 10' 0")		

Nordic

3 Bedroom

79.65m² (857 sq ft)

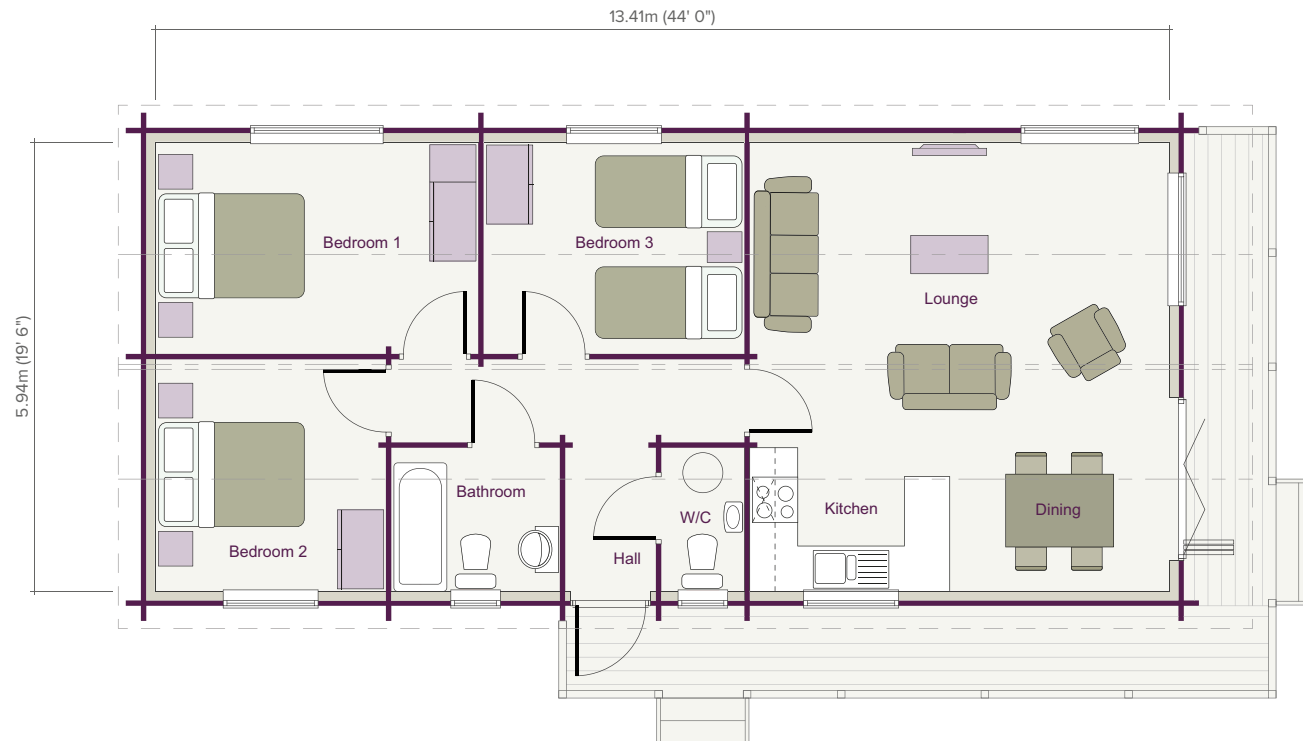


ELEVATIONS SCALE 1:200

TIMELESS TRADITIONAL

Deluxe 6.8m (22' 3") external width version available. Please ask for details.

FLOOR PLAN SCALE 1:100



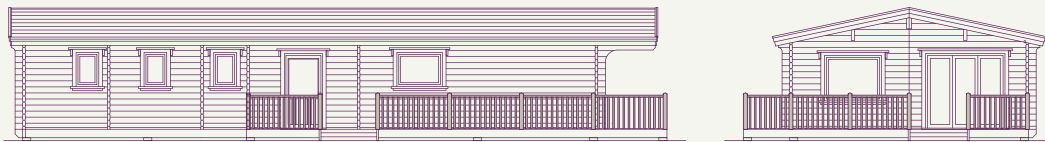
ROOM DIMENSIONS

Living Area	5.50m x 5.94m	(18' 3" x 19' 6")	Bedroom 1	4.27m x 2.80m	(14' 0" x 9' 2")	Bathroom	2.23m x 1.90m	(7' 4" x 6' 3")
Entrance Hall	1.30m x 1.90m	(4' 3" x 6' 3")	Bedroom 2	3.05m x 3.07m	(10' 0" x 10' 1")			
W/C	1.10m x 1.90m	(3' 7" x 6' 3")	Bedroom 3	3.45m x 2.80m	(11' 4" x 9' 2")			

Pennine

3 Bedroom

88.00m² (948 sq ft)

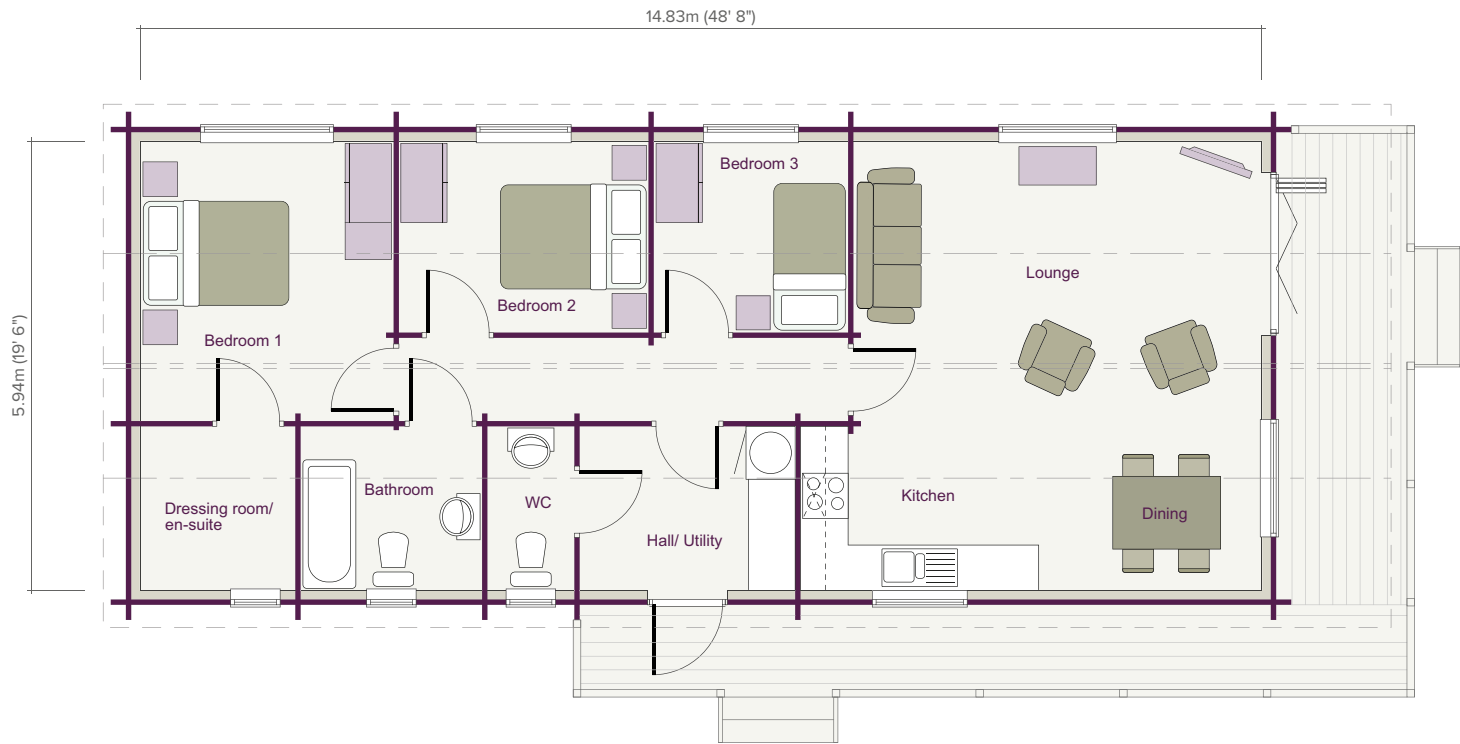


ELEVATIONS SCALE 1:200

TIMELESS TRADITIONAL

Deluxe 6.8m (22' 3") external width version available. Please ask for details.

FLOOR PLAN SCALE 1:100



ROOM DIMENSIONS

Living Area	5.40m / 6.10m x 5.94m (17' 9" / 20' 0" x 19' 6")	W/C	1.15m x 2.17m (3' 9" x 7' 1")	Bedroom 2	3.30m x 2.53m (10' 10" x 8' 4")
Hall/Utility	2.85m x 2.17m (9' 4" x 7' 1")	Bedroom 1	3.35m x 3.70m (11' 0" x 12' 2")	Bedroom 3	2.57m x 2.53m (8' 5" x 8' 4")
		Dressing Room	2.05m x 2.17m (6' 9" x 7' 1")	Bathroom	2.40m x 2.17m (7' 10" x 7' 1")

Grampian

3 Bedroom

94.15m² (1,013 sq ft)

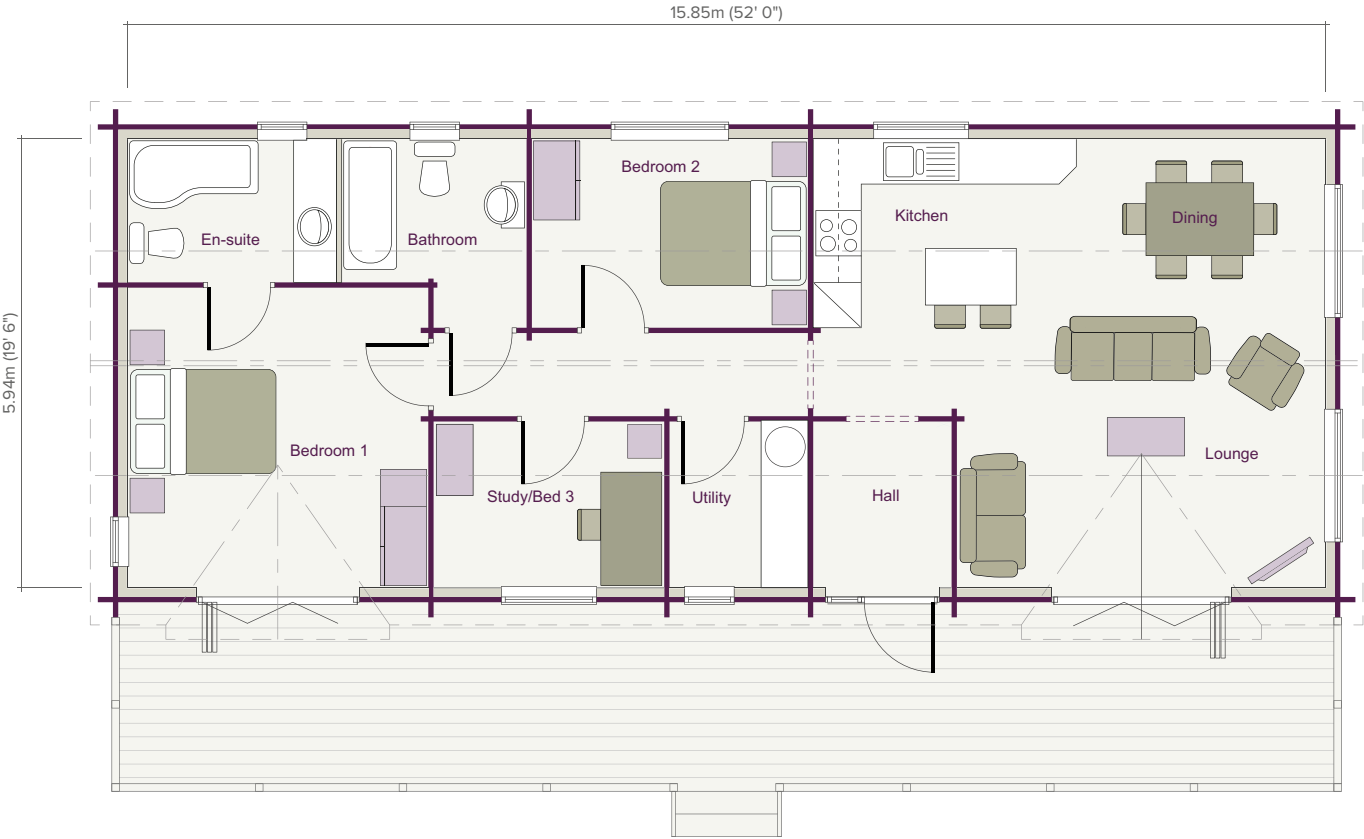


ELEVATIONS SCALE 1:200

TIMELESS TRADITIONAL

Deluxe 6.8m (22' 3") external width version available. Please ask for details.

FLOOR PLAN SCALE 1:100



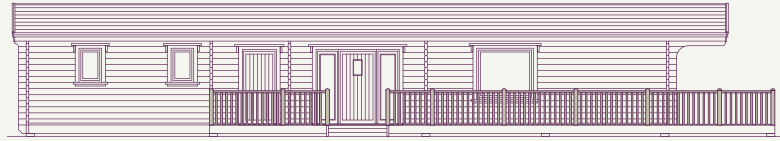
ROOM DIMENSIONS

Living Area	6.78m / 4.88m x 5.94m (22' 3" / 16' 0" x 19' 6")	Utility	1.83m x 2.20m (6' 0" x 7' 3")	Bedroom 2	3.65m x 2.50m (12' 0" x 8' 2")
Entrance Hall	1.83m x 2.20m (6' 0" x 7' 3")	Bedroom 1	3.98m x 3.97m (13' 1" x 13' 0")	Bedroom 3	3.05m x 2.20m (10' 0" x 7' 2")
		En-suite	2.75m x 1.90m (9' 0" x 6' 3")	Bathroom	2.43m x 1.90m (8' 0" x 6' 3")

New Highland

3 Bedroom

98.72m² (1,062 sq ft)

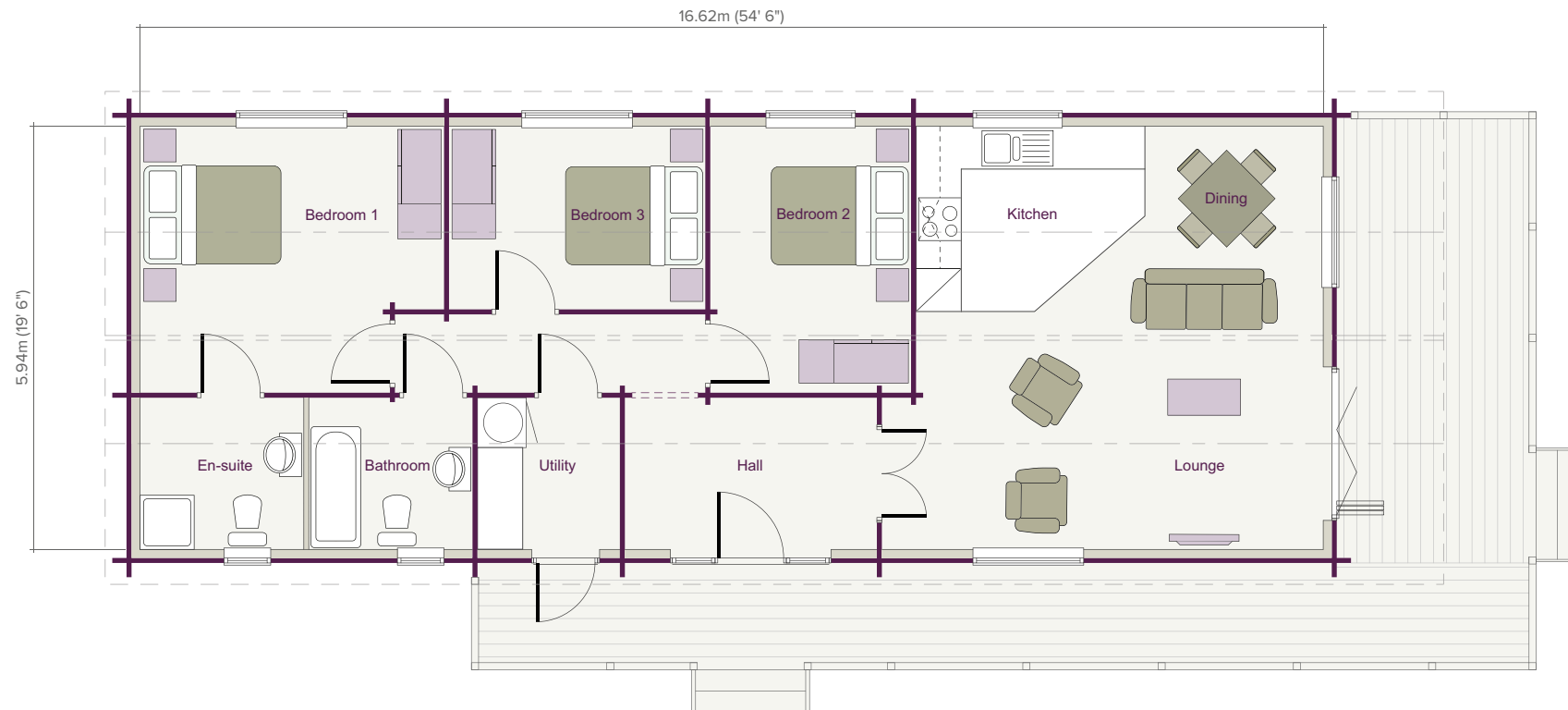


ELEVATIONS SCALE 1:200

TIMELESS TRADITIONAL

Deluxe 6.8m (22' 3") external width version available. Please ask for details.

FLOOR PLAN SCALE 1:100



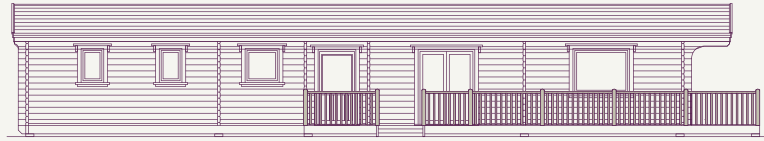
ROOM DIMENSIONS

Living Area	5.72m / 6.20m x 5.94m (18' 9" / 20' 4" x 19' 6")	Utility	2.00m x 2.13m (6' 6" x 7' 0")	Bedroom 2	2.82m x 3.74m (9' 3" x 12' 3")
Entrance Hall	3.54m x 2.13m (11' 7" x 7' 0")	Bedroom 1	4.27m x 3.74m (14' 0" x 12' 3")	Bedroom 3	3.60m x 2.57m (11' 9" x 8' 5")
		En-suite	2.29m x 2.13m (7' 6" x 7' 0")	Bathroom	2.29m x 2.13m (7' 6" x 7' 0")

Wicklow

3 Bedroom

101.16m² (1,089 sq ft)

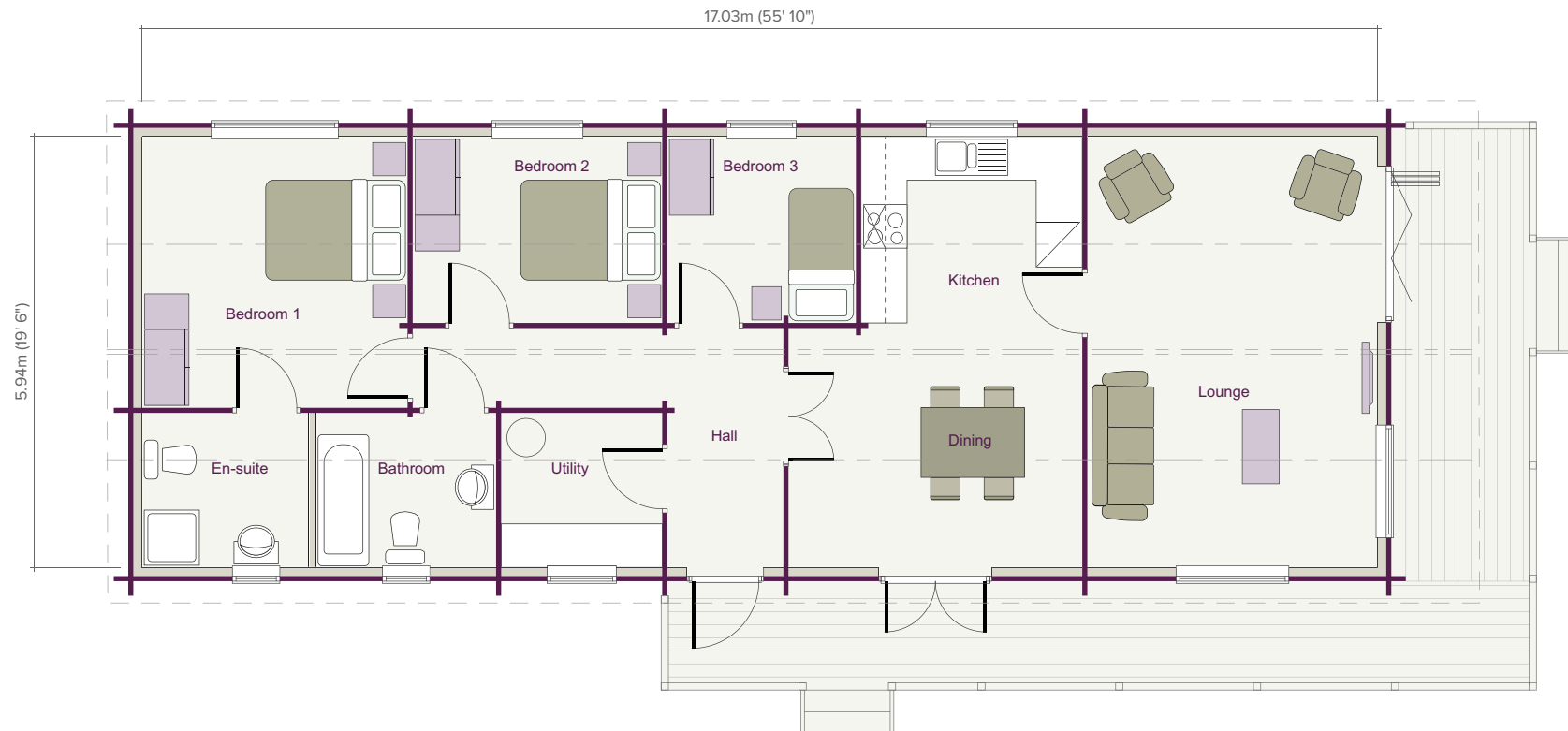


ELEVATIONS SCALE 1:200

TIMELESS TRADITIONAL

Deluxe 6.8m (22' 3") external width version available. Please ask for details.

FLOOR PLAN SCALE 1:100



ROOM DIMENSIONS

Lounge 4.00m x 5.94m (13' 1" x 19' 6")
 Kitchen/Dining 3.05m / 4.05m x 5.94m
 (10' 0" / 13' 3" x 19' 6")

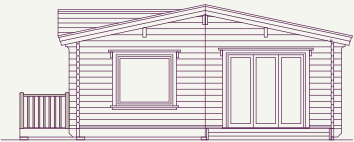
Entrance Hall 1.60m x 3.30m (5' 3" x 10' 10")
 Utility 2.22m x 2.13m (7' 3" x 7' 0")
 Bedroom 1 3.66m x 3.74m (12' 0" x 12' 3")
 En-suite/Shower 2.30m x 2.13m (7' 7" x 7' 0")

Bedroom 2 3.44m x 2.57m (11' 3" x 8' 5")
 Bedroom 3 2.60m x 2.57m (8' 6" x 8' 5")
 Bathroom 2.48m x 2.13m (8' 2" x 7' 0")

Mendip

3 Bedroom

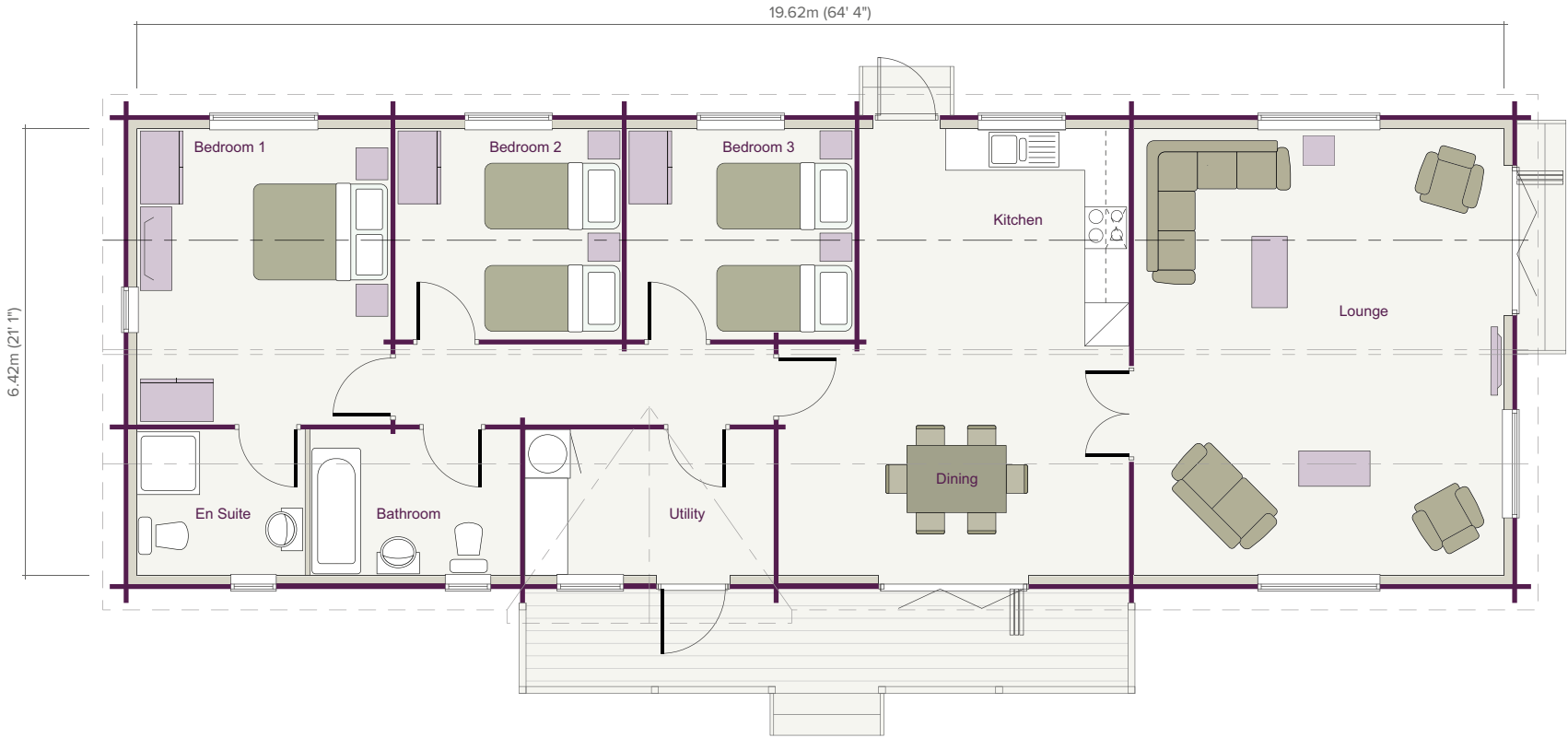
125.96m² (1,356 sq ft)



ELEVATIONS SCALE 1:200

TIMELESS TRADITIONAL

FLOOR PLAN SCALE 1:100



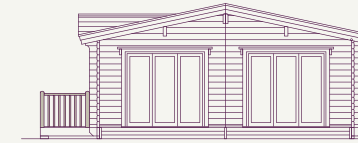
ROOM DIMENSIONS

Lounge	5.31m x 6.42m	(17' 5" x 21' 1")	Hall/Utility	3.57m x 2.10m	(11' 9" x 6' 11")	Bedroom 2	3.25m x 3.03m	(10' 8" x 9' 11")
Kitchen/Dining	3.87m / 5.03m x 6.42m	(12' 8" / 16' 6" x 21' 1")	Bedroom 1	3.64m x 4.25m	(11' 11" x 13' 11")	Bedroom 3	3.27m x 3.03m	(10' 9" x 9' 11")
			En-suite	2.40m x 2.10m	(7' 10" x 6' 11")	Bathroom	3.00m x 2.10m	(9' 10" x 6' 11")

Windermere

3 Bedroom

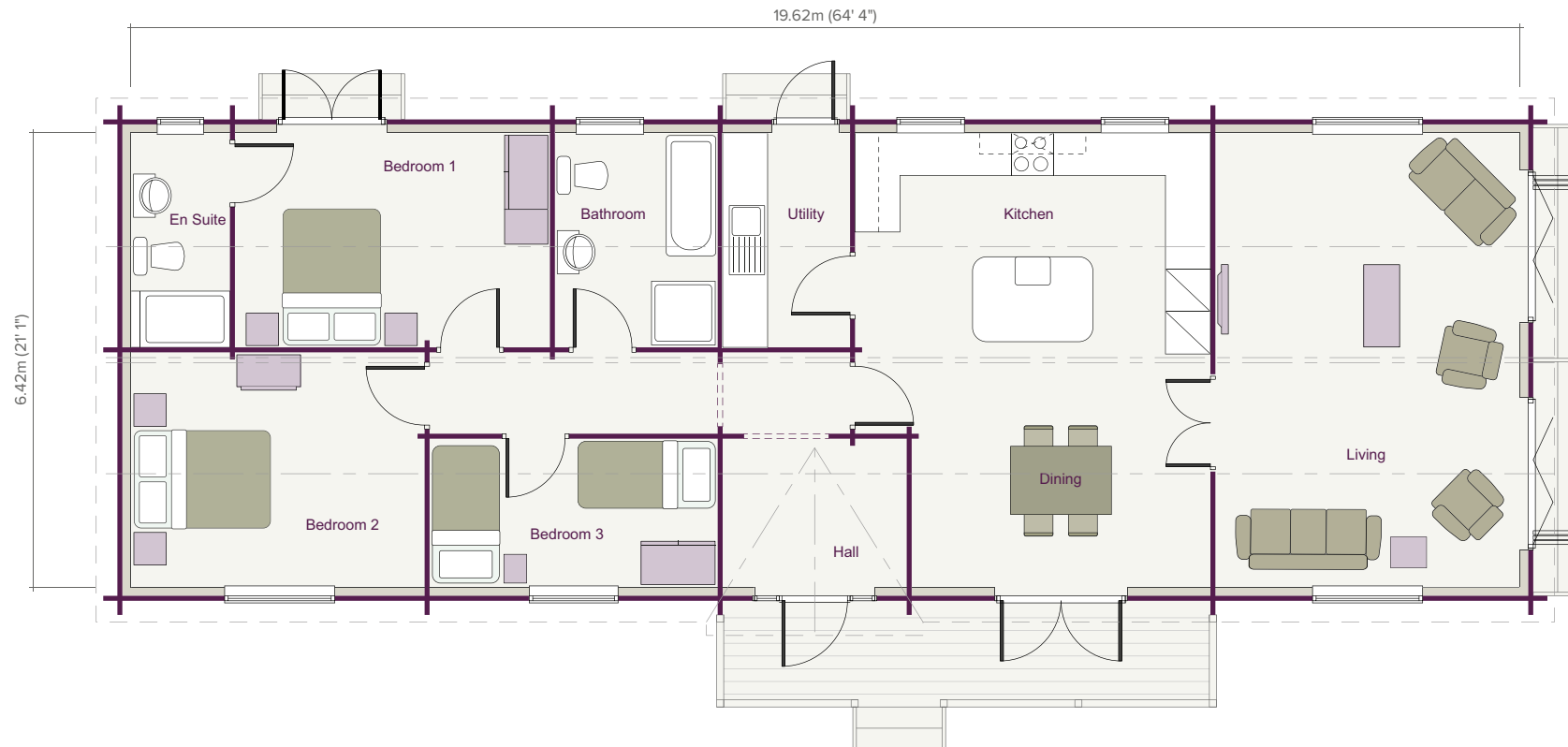
125.96m² (1,356 sq ft)



ELEVATIONS SCALE 1:200

TIMELESS TRADITIONAL

FLOOR PLAN SCALE 1:100



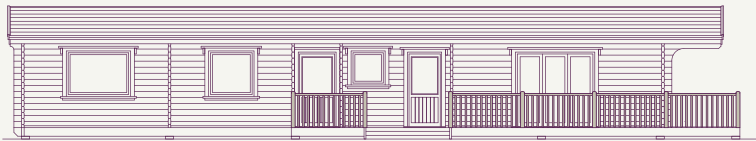
ROOM DIMENSIONS

Lounge	4.30m x 6.42m	(14' 1" x 21' 1")	Utility	1.80m x 3.03m	(5' 11" x 9' 11")	Bedroom 3	4.07m x 2.10m	(13' 4" x 6' 11")
Kitchen/Dining	5.02m / 4.22m x 6.42m	(16' 6" / 13' 10" x 21' 1")	Bedroom 1	4.45m x 3.03m	(14' 7" x 9' 11")	Bathroom	2.30m x 3.03m	(7' 7" x 9' 11")
Entrance Hall	2.60m x 2.10m	(8' 6" x 6' 11")	En-suite	1.40m x 3.03m	(4' 7" x 9' 11")			
			Bedroom 2	4.15m x 3.32m	(13' 7" x 10' 11")			

Cairngorm

4 Bedroom

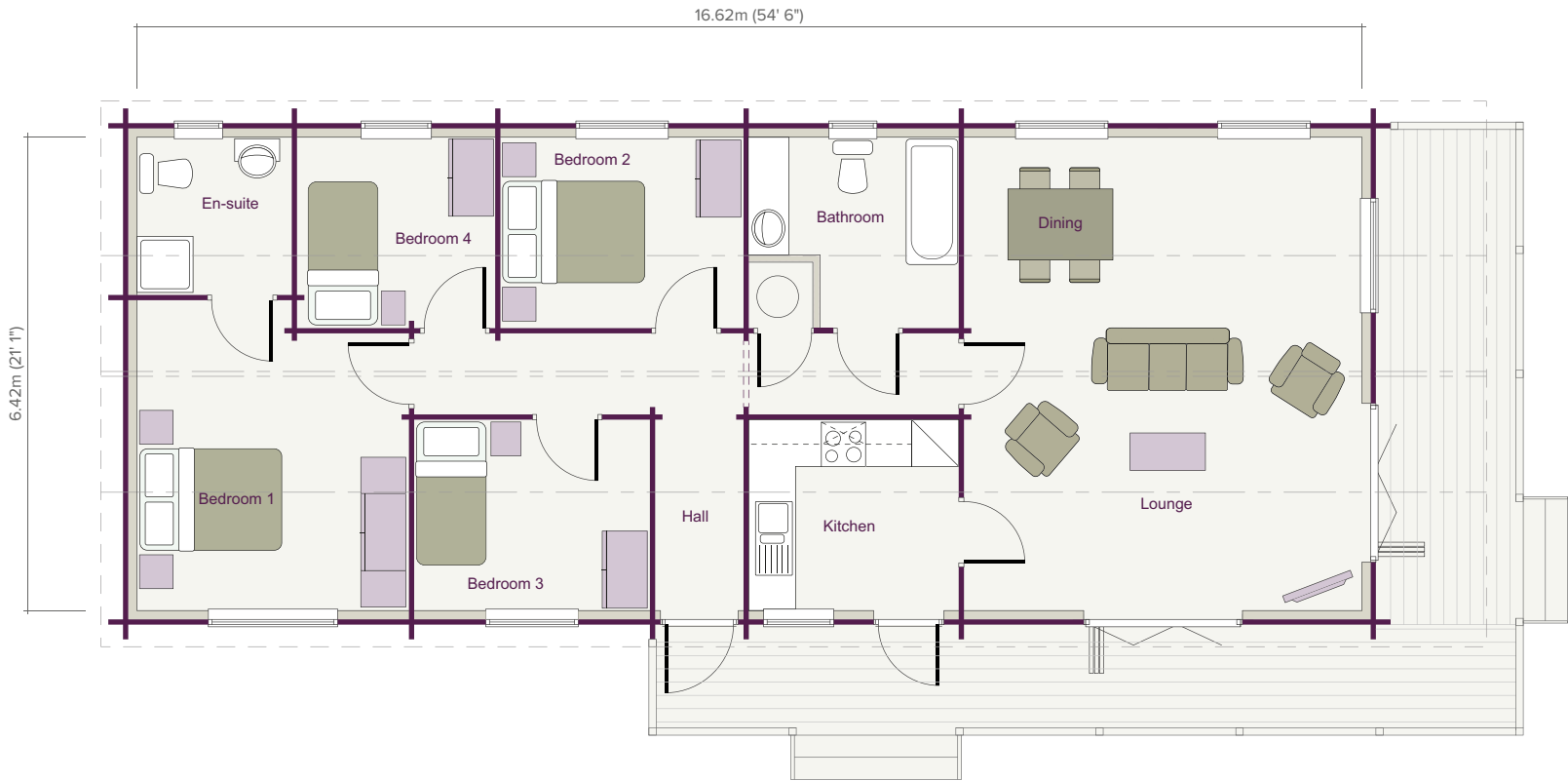
106.70m² (1,148 sq ft)



ELEVATIONS SCALE 1:200

TIMELESS TRADITIONAL

FLOOR PLAN SCALE 1:100



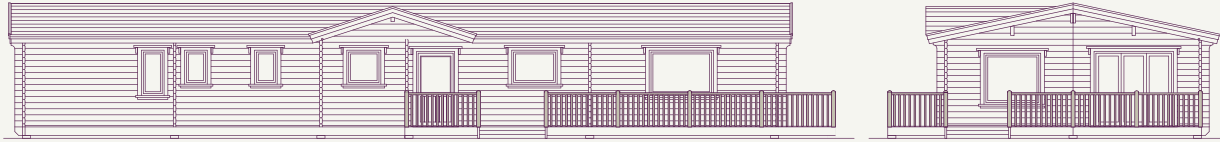
ROOM DIMENSIONS

Lounge	5.40m x 6.42m	(17' 9" x 21' 1")	Bedroom 1	3.69m x 4.21m / 3.76m		Bedroom 3	3.20m x 2.59m	(10' 6" x 8' 6")
Kitchen	2.85m x 2.59m	(9' 4" x 8' 6")		(12' 1" x 13' 10" / 12' 4")		Bedroom 4	2.69m x 2.59m	(8' 10" x 8' 6")
Entrance Hall	1.20m x 2.59m	(3' 11" x 8' 6")	En-suite	2.10m x 2.14m	(6' 11" x 7' 0")	Bathroom	2.85m x 2.59m	(9' 4" x 8' 6")
			Bedroom 2	3.30m x 2.59m	(10' 10" x 8' 6")			

Cambrian

4 Bedroom

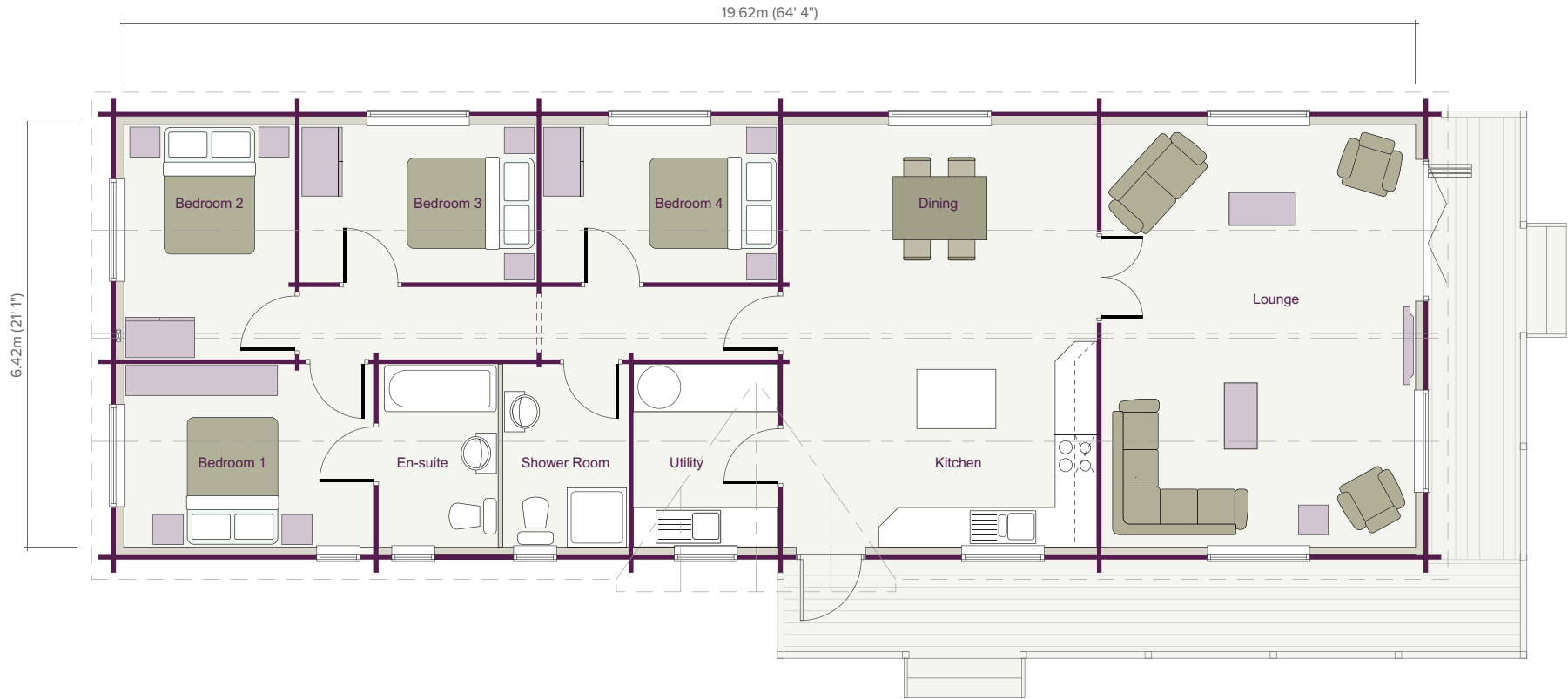
125.96m² (1,356 sq ft)



ELEVATIONS SCALE 1:200

TIMELESS TRADITIONAL

FLOOR PLAN SCALE 1:100



ROOM DIMENSIONS

Lounge	4.77m x 6.42m	(15' 8" x 21' 1")	En-suite	1.80m x 2.78m	(5' 11" x 9' 1")	Shower Room	1.90m x 2.78m	(6' 3" x 9' 1")
Kitchen/Dining	4.77m x 6.42m	(15' 8" x 21' 1")	Bedroom 2	2.60m x 3.57m	(8' 6" x 11' 9")			
Utility	2.20m x 2.78m	(7' 3" x 9' 1")	Bedroom 3	3.60m x 2.43m	(11'10" x 8' 0")			
Bedroom 1	3.80m x 2.78m	(12' 6" x 9' 1")	Bedroom 4	3.60m x 2.43m	(11'10" x 8' 0")			



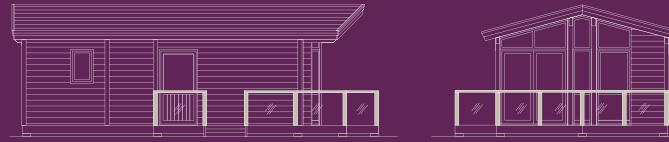
Stylish Contemporary plans & elevations

Traditional log virtues with contemporary styling

Bergen

1 Bedroom

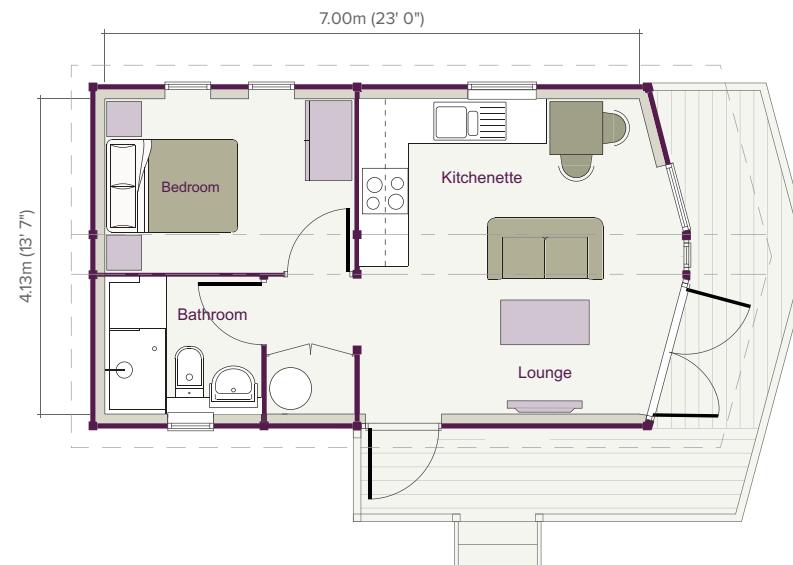
30.00m² (323 sq ft)



ELEVATIONS SCALE 1:200

STYLISH CONTEMPORARY

FLOOR PLAN SCALE 1:100



ROOM DIMENSIONS

Living Area	4.21m x 4.13m	(13' 10" x 13' 7")
Bedroom	3.27m x 2.33m	(10' 9" x 7' 8")
Bathroom	2.0m x 1.73m	(6' 7" x 5' 8")

Oslo

1 Bedroom

43.86m² (472 sq ft)



ELEVATIONS SCALE 1:200

STYLISH CONTEMPORARY

FLOOR PLAN SCALE 1:100



ROOM DIMENSIONS

Living Area	4.58m x 5.94m	(15' 0" x 19' 6")
Bedroom	3.00m x 3.45m	(9' 10" x 11' 4")
Bathroom	1.73m x 2.43m	(5' 8" x 8' 0")

Røros

2 Bedroom

56.60m² (610 sq ft)

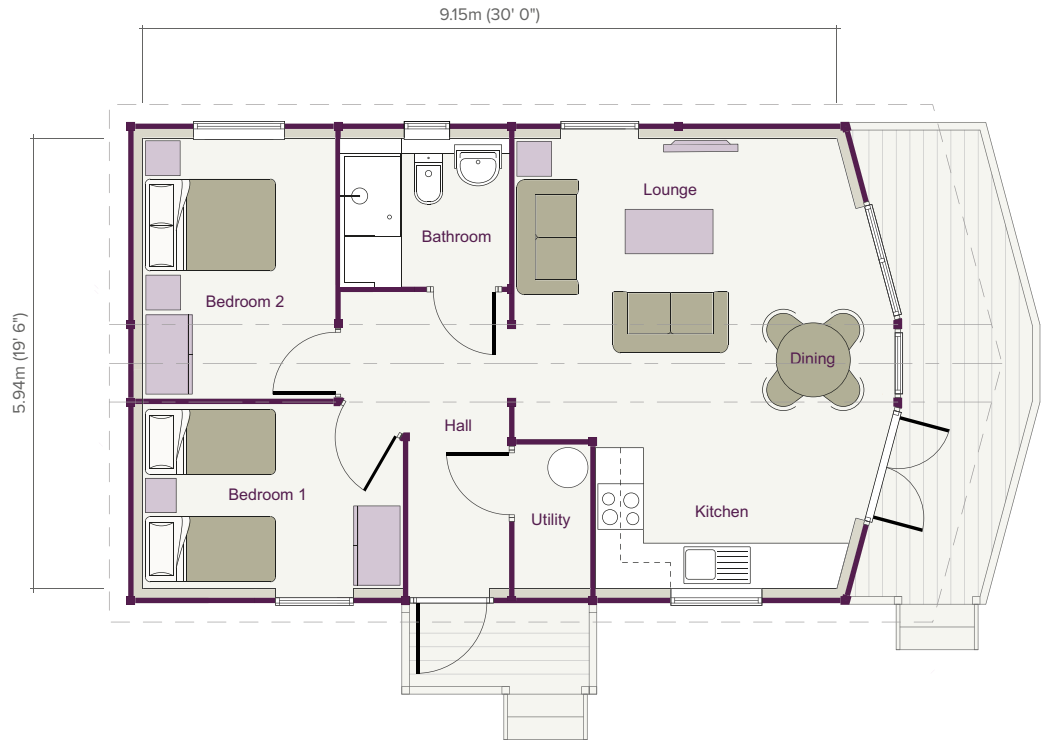


ELEVATIONS SCALE 1:200

STYLISH CONTEMPORARY

Deluxe 6.8m (22' 3") external width version available. Please ask for details.

FLOOR PLAN SCALE 1:100



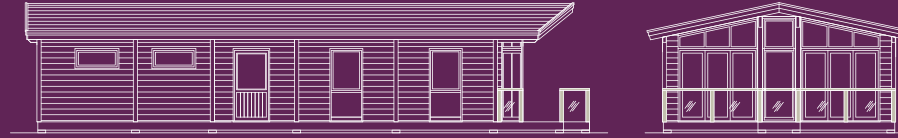
ROOM DIMENSIONS

Living Area	4.90m x 5.94m	(16' 1" x 19' 6")	Bedroom 1	3.45m x 2.54m	(11' 4" x 8' 4")	Bathroom	2.22m x 1.96m	(7' 3" x 6' 5")
Entrance Hall	1.33m x 3.91m	(4' 4" x 12' 10")	Bedroom 2	3.43m x 2.43m	(11' 3" x 7' 11")			
Utility	1.00m x 1.90m	(3' 3" x 6' 3")						

Stavanger

2 Bedroom

73.10m² (787 sq ft)

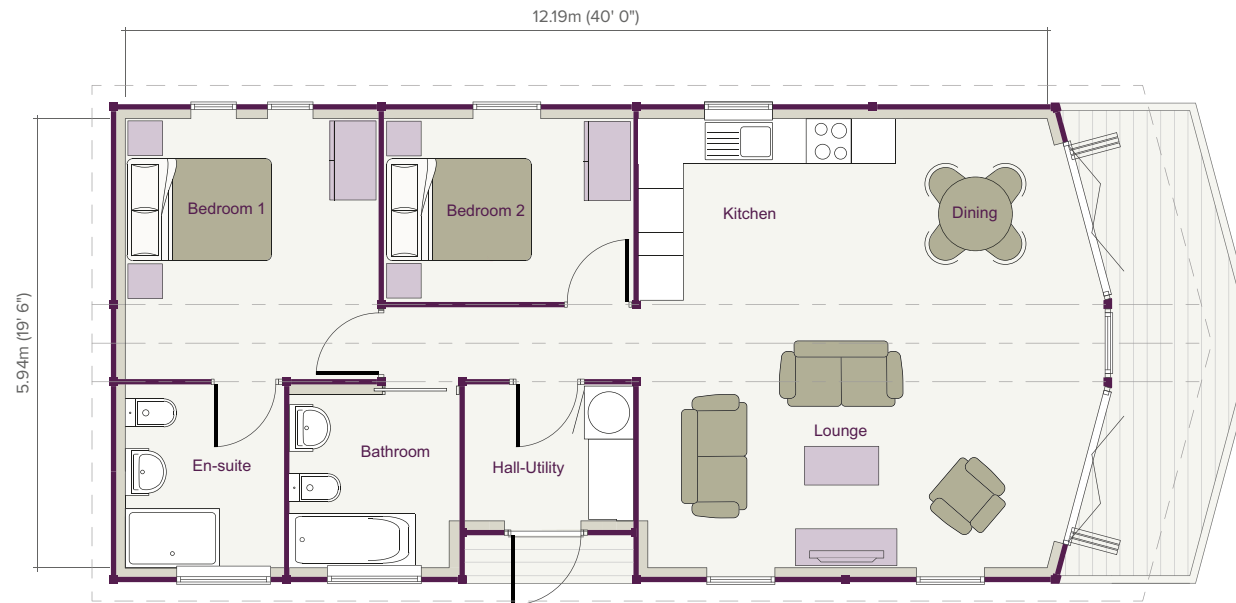


ELEVATIONS SCALE 1:200

STYLISH CONTEMPORARY

Deluxe 6.8m (22' 3") external width version available. Please ask for details.

FLOOR PLAN SCALE 1:100



ROOM DIMENSIONS

Living Area	5.93m x 5.94m	(19' 5" x 19' 6")	Bedroom 1	3.45m x 3.45m	(11' 4" x 11' 4")	Bedroom 2	3.32m x 2.43m	(10' 11" x 7' 11")
Hall-Utility	2.23m x 2.03m	(7' 4" x 6' 8")	En-suite	2.44m x 2.43m	(8' 0" x 7' 11")	Bathroom	2.03m x 2.43m	(6' 8" x 7' 11")

Lillehammer

3 Bedroom

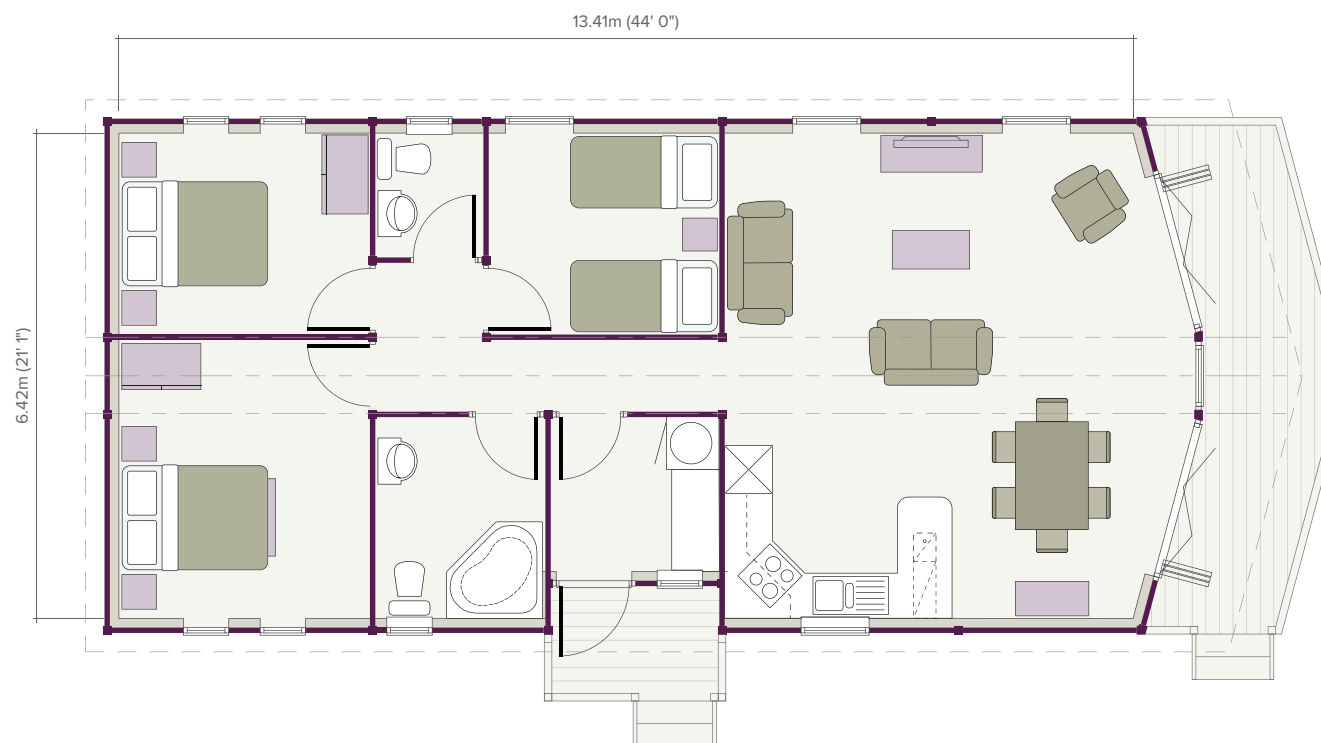
87.20m² (938 sq ft)



ELEVATIONS SCALE 1:200

STYLISH CONTEMPORARY

FLOOR PLAN SCALE 1:100



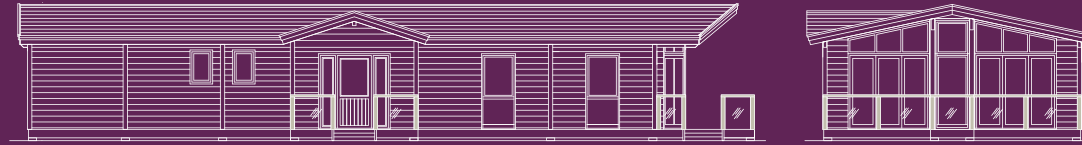
ROOM DIMENSIONS

Living Area	6.11m x 6.42m	(20' 1" x 21' 1")	Bedroom 1	3.32m x 3.69m	(10' 11" x 12' 1")	Bathroom	2.25m x 2.67m	(7' 5" x 8' 9")
Hall/Utility	2.23m x 2.05m	(7' 4" x 6' 9")	Bedroom 2	3.32m x 2.67m	(10' 11" x 8' 9")			
W/C	1.43m x 1.65m	(4' 8" x 5' 5")	Bedroom 3	3.05m x 2.67m	(10' 0" x 8' 9")			

Narvik

3 Bedroom

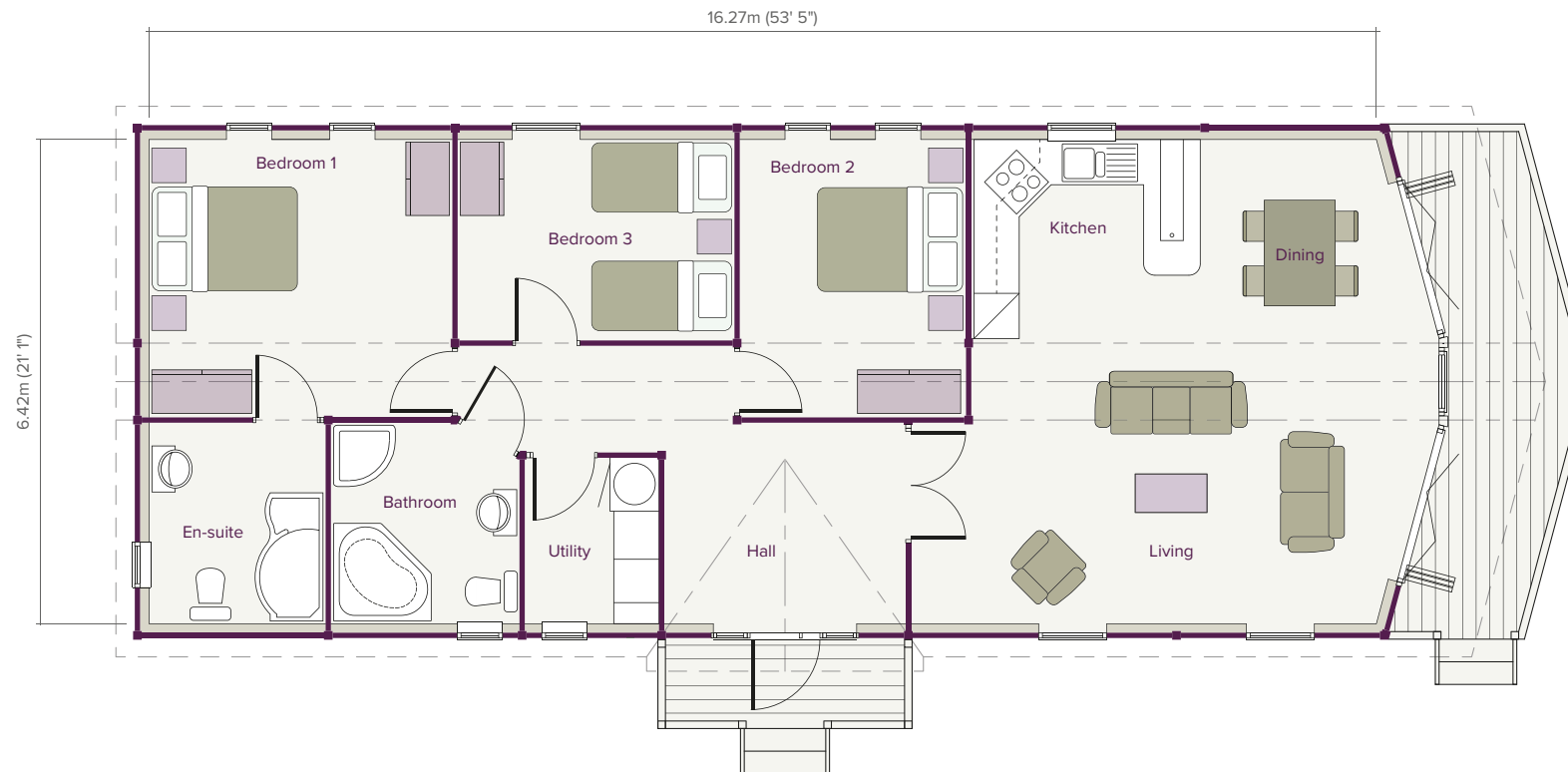
107.10m² (1,152 sq ft)



ELEVATIONS SCALE 1:200

STYLISH CONTEMPORARY

FLOOR PLAN SCALE 1:100



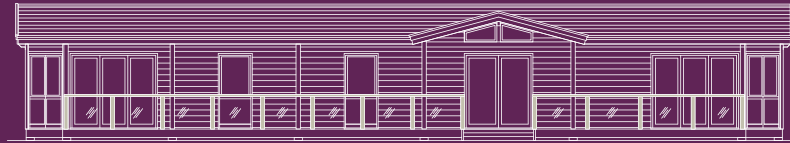
ROOM DIMENSIONS

Living Area	6.17m / 5.37m x 6.42m (20' 3" / 17' 7" x 21' 1")	Utility	1.78m x 2.20m (5' 10" x 7' 2")	Bedroom 2	3.00m x 3.69m (9' 10" x 12' 1")
Entrance Hall	3.20m x 2.67m (10' 6" x 8' 9")	Bedroom 1	4.02m x 3.69m (13' 2" x 12' 1")	Bedroom 3	3.67m x 2.67m (12' 0" x 8' 9")
		En-suite	2.34m x 2.67m (7' 8" x 8' 9")	Bathroom	2.50m x 2.67m (8' 2" x 8' 9")

Kristiansand

3 Bedroom

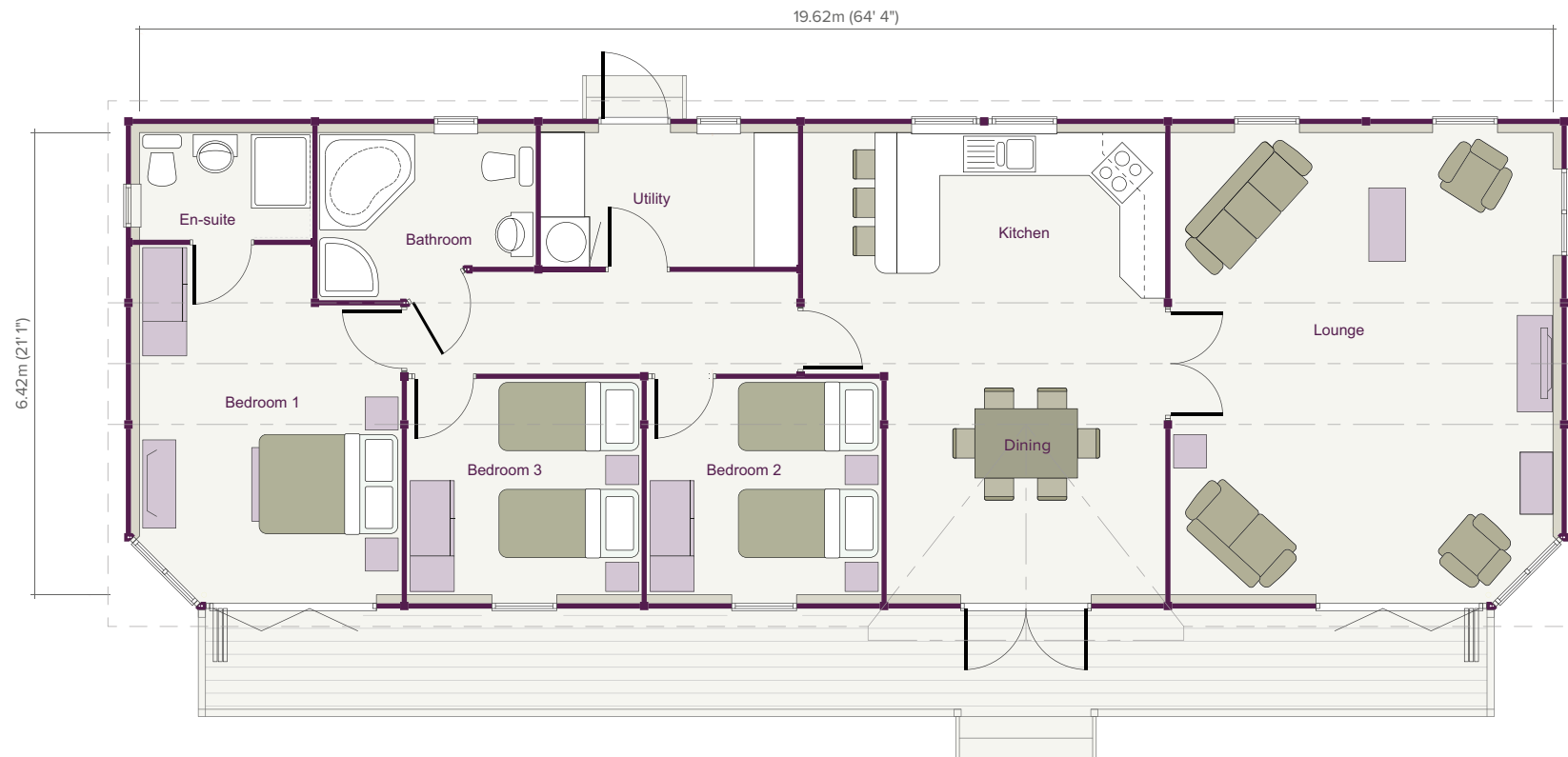
125.16m² (1,347 sq ft)



ELEVATIONS SCALE 1:200

STYLISH CONTEMPORARY

FLOOR PLAN SCALE 1:100



ROOM DIMENSIONS

Lounge 5.31m x 6.42m (17' 5" x 21' 1")
 Kitchen/Dining 5.03m / 3.87m x 6.42m
 (16' 6" / 12' 8" x 21' 1")
 Hall/Utility 3.57m x 1.86m (11' 9" x 6' 1")

Bedroom 1 3.64m x 4.86m / 4.02m
 (11' 11" x 15' 11" / 13' 2")
 En-suite 2.40m x 1.49m (7' 10" x 4' 11")
 Bedroom 2 3.26m x 3.00m (10' 8" x 9' 10")

Bedroom 3 3.26m x 3.00m (10' 8" x 9' 10")
 Bathroom 3.03m x 2.33m (9' 11" x 7' 8")

Extendable five-year warranty & service plan

We build our log buildings to a high standard that we have refined over more than 25 years. We will therefore have every confidence in sending you your Warranty Certificate for your completed building, which guarantees the main structure for five years.

However, you can easily extend your warranty to up to 25 years. With the help of our Service Plan, simply maintain your Norwegian Log building properly – just as you would any other kind of building.

Remember that by looking after your building properly, you keep it in the best possible condition and protect your investment.

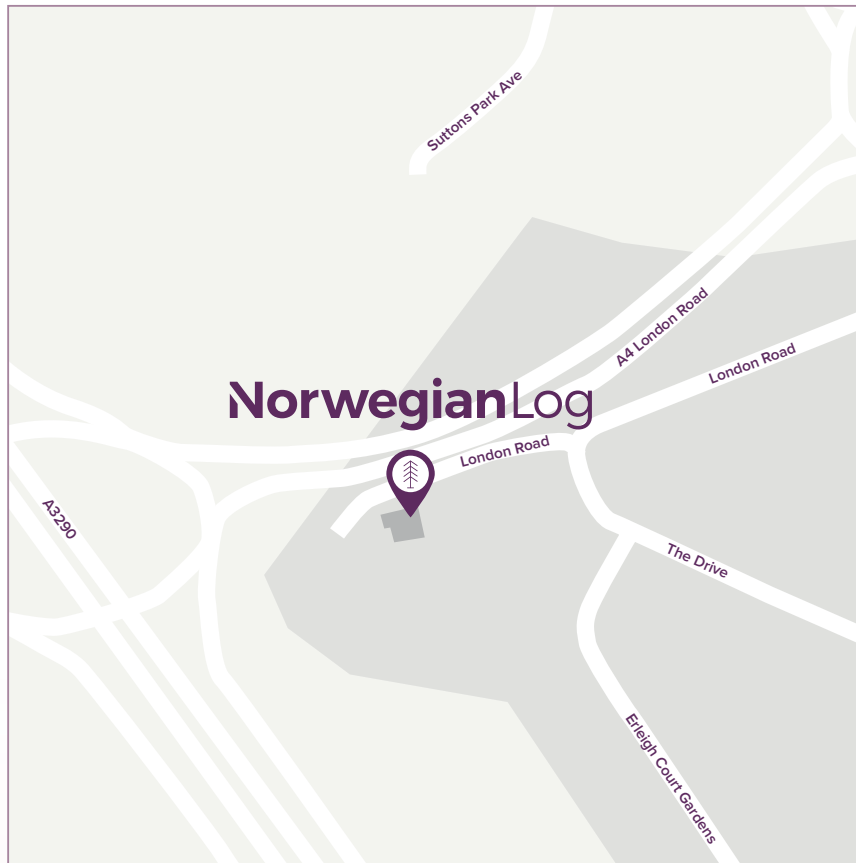
Service Plan

When you receive your Warranty Certificate, you will also receive an invitation to join our Service Plan. The Service Plan extends your warranty to up to 25 years, subject to your continued participation in the scheme.

Why do I need a Service Plan?

Our Service Plan gives you the reassurance of knowing that your building has an expert inspection every second year. For example, your building will need treatment with a microporous stain from time to time, to maintain the lustre of the log and protect it from ultraviolet light, wind and rain. We will advise you if work becomes necessary, and leave you free to engage the contractor of your choice to carry it out.

Customer service



Norwegian Log Buildings Ltd.

230 London Road, Reading,
Berkshire, RG6 1AH

T 0118 966 9236
E sales@norwegianlog.co.uk
W www.norwegianlog.co.uk

Office hours

Monday to Friday 0900 – 1700

Show buildings

We have show buildings in Reading available for you to view. By appointment only: please book your visit on 0118 966 9236.

BUILDINGS FOR LIFE

Norwegian Log Buildings Limited, 230 London Road, Reading RG6 1AH | 0118 966 9236 | sales@norwegianlog.co.uk | www.norwegianlog.co.uk

 @NorwegianLog |  @NorwegianLogBuildings |  norwegianlogbuildings