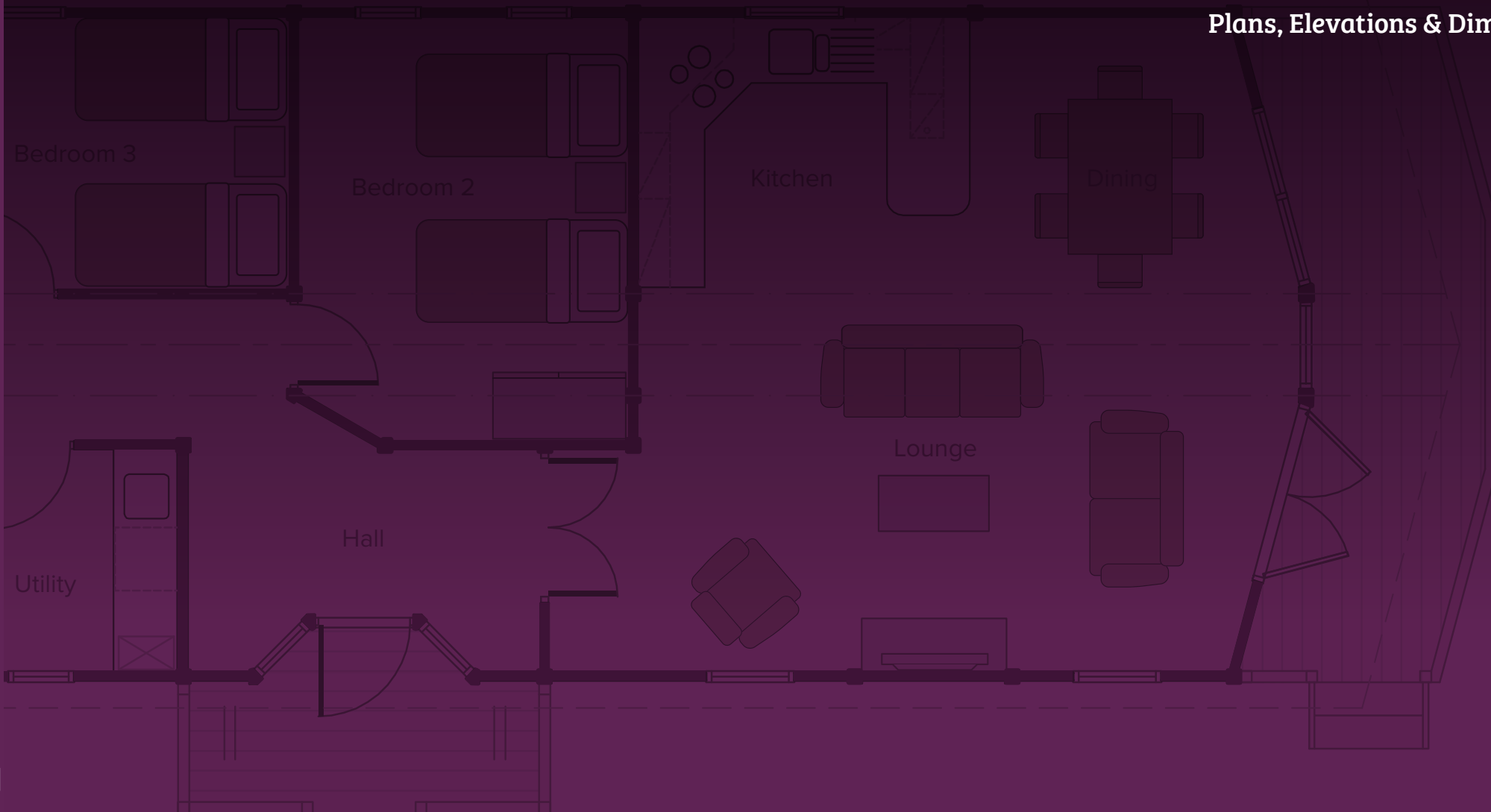


Stylish Contemporary Log Homes

Plans, Elevations & Dimensions

16.27m



Bergen

1 Bedroom

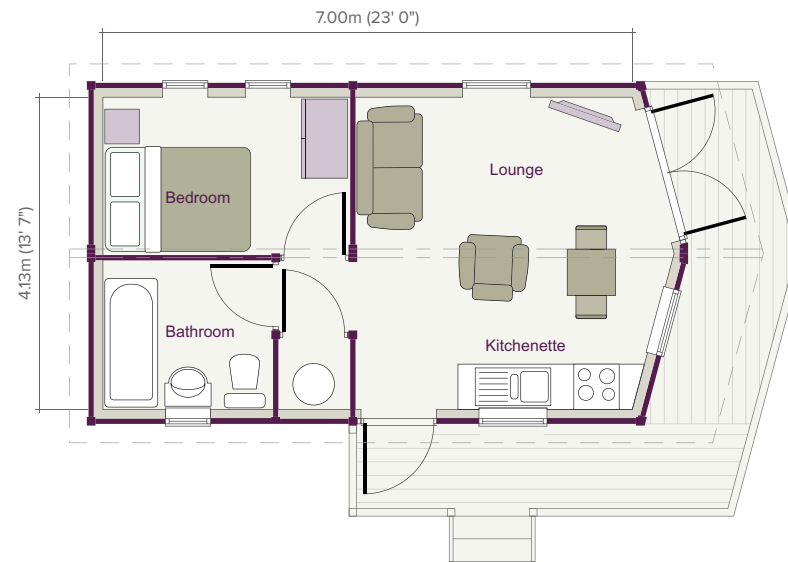
30.00m² (323 sq ft)



ELEVATIONS SCALE 1:200

STYLISH CONTEMPORARY

FLOOR PLAN SCALE 1:100



ROOM DIMENSIONS

Living Area	4.21m x 4.13m	(13' 10" x 13' 7")
Bedroom	3.27m x 2.09m	(10' 9" x 6' 10")
Bathroom	2.25m x 1.97m	(7' 5" x 6' 6")

Oslo

1 Bedroom

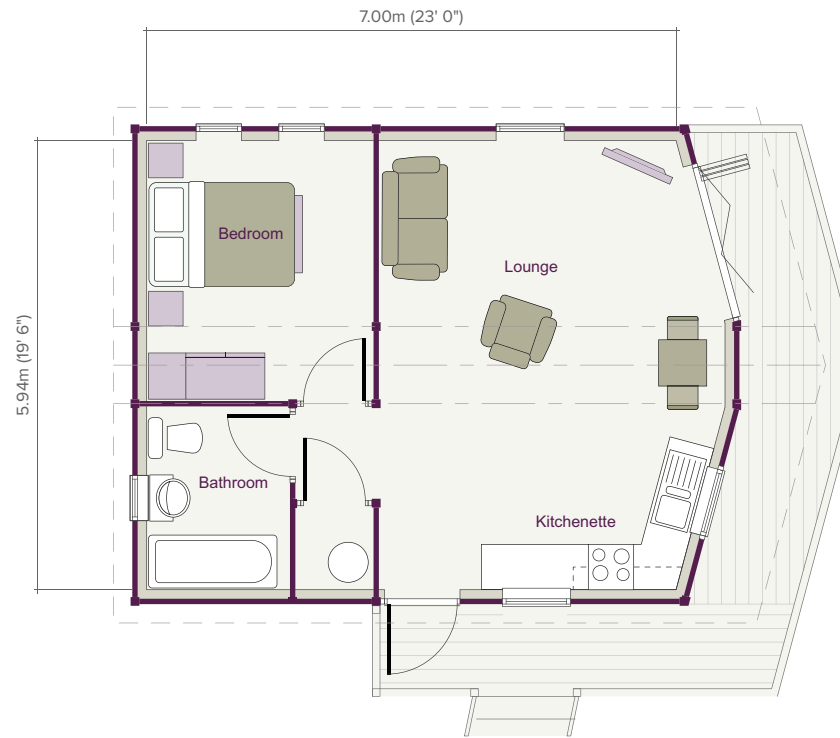
43.86m² (472 sq ft)



ELEVATIONS SCALE 1:200

STYLISH CONTEMPORARY

FLOOR PLAN SCALE 1:100



ROOM DIMENSIONS

Living Area	4.58m x 5.94m	(15' 0" x 19' 6")
Bedroom	3.00m x 3.45m	(9' 10" x 11' 4")
Bathroom	1.90m x 2.43m	(6' 3" x 8' 0")

Røros

2 Bedroom

56.60m² (610 sq ft)



ELEVATIONS SCALE 1:200

STYLISH CONTEMPORARY

Deluxe 6.8m (22' 3") external width version available. Please ask for details.

FLOOR PLAN SCALE 1:100



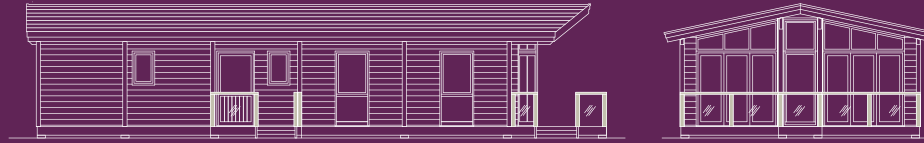
ROOM DIMENSIONS

Living Area	4.90m x 5.94m	(16' 1" x 19' 6")	Bedroom 1	3.43m x 2.89m	(11' 3" x 9' 6")	Bathroom	2.22m x 1.96m	(7' 3" x 6' 5")
Entrance Hall	1.33m x 3.91m	(4' 4" x 12' 10")	Bedroom 2	2.54m x 2.98m	(8' 4" x 9' 9")			
Utility	1.00m x 1.90m	(3' 3" x 6' 3")						

Stavanger

2 Bedroom

73.10m² (787 sq ft)

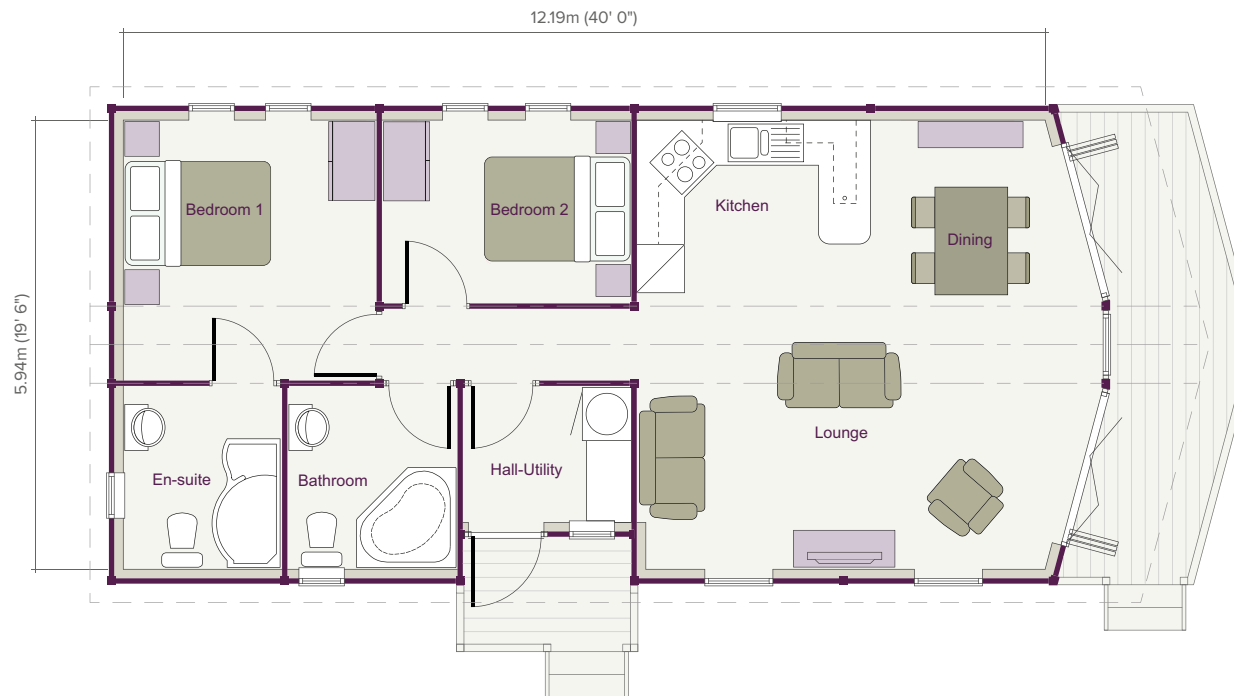


ELEVATIONS SCALE 1:200

STYLISH CONTEMPORARY

Deluxe 6.8m (22' 3") external width version available. Please ask for details.

FLOOR PLAN SCALE 1:100



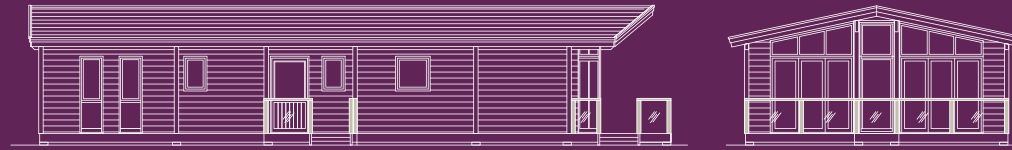
ROOM DIMENSIONS

Living Area	6.05m x 5.94m	(19' 10" x 19' 6")	Bedroom 1	3.35m x 3.45m	(11' 0" x 11' 4")	Bedroom 2	3.30m x 2.43m	(10' 10" x 7' 11")
Hall/Utility	2.23m x 1.80m	(7' 4" x 5' 11")	En-suite	2.10m x 2.43m	(6' 11" x 7' 11")	Bathroom	2.25m x 2.43m	(7' 5" x 7' 11")

Lillehammer

3 Bedroom

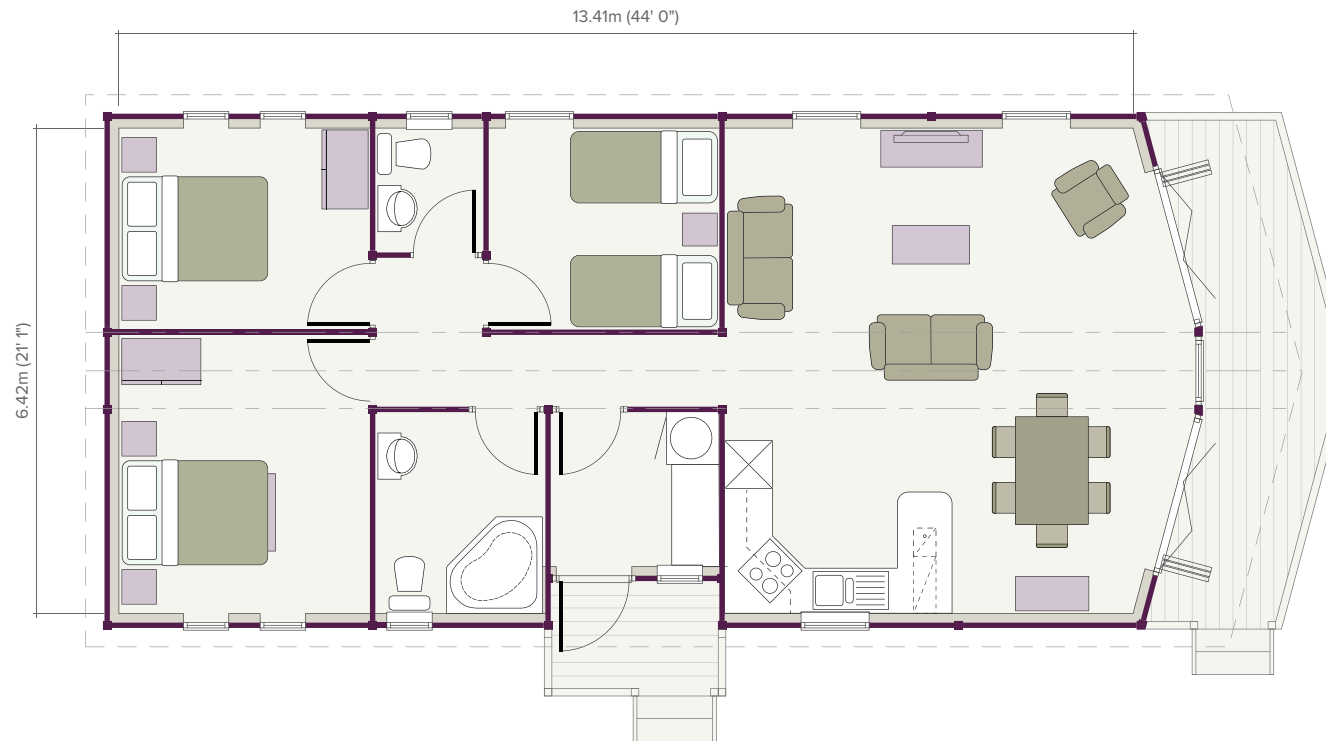
87.20m² (938 sq ft)



ELEVATIONS SCALE 1:200

STYLISH CONTEMPORARY

FLOOR PLAN SCALE 1:100



ROOM DIMENSIONS

Living Area	6.11m x 6.42m	(20' 1" x 21' 1")	Bedroom 1	3.32m x 3.69m	(10' 11" x 12' 1")	Bathroom	2.25m x 2.67m	(7' 5" x 8' 9")
Hall/Utility	2.23m x 2.05m	(7' 4" x 6' 9")	Bedroom 2	3.32m x 2.67m	(10' 11" x 8' 9")			
W/C	1.43m x 1.65m	(4' 8" x 5' 5")	Bedroom 3	3.05m x 2.67m	(10' 0" x 8' 9")			

Narvik

3 Bedroom

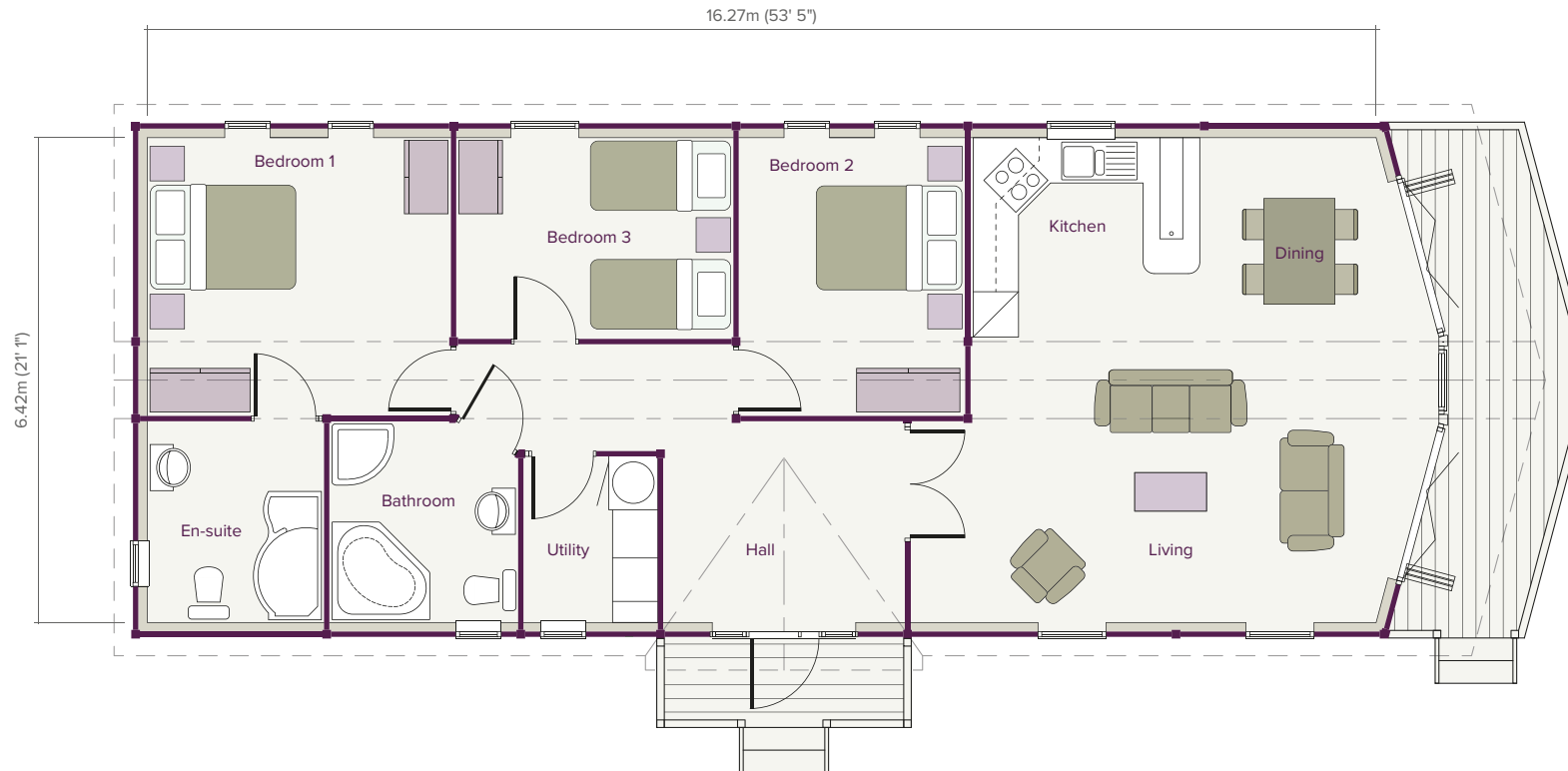
107.10m² (1,152 sq ft)



ELEVATIONS SCALE 1:200

STYLISH CONTEMPORARY

FLOOR PLAN SCALE 1:100



ROOM DIMENSIONS

Living Area	6.17m / 5.37m x 6.42m (20' 3" / 17' 7" x 21' 1")	Utility	1.78m x 2.20m (5' 10" x 7' 2")	Bedroom 2	3.00m x 3.69m (9' 10" x 12' 1")
Entrance Hall	3.20m x 2.67m (10' 6" x 8' 9")	Bedroom 1	4.02m x 3.69m (13' 2" x 12' 1")	Bedroom 3	3.67m x 2.67m (12' 0" x 8' 9")
		En-suite	2.34m x 2.67m (7' 8" x 8' 9")	Bathroom	2.50m x 2.67m (8' 2" x 8' 9")

Kristiansand

3 Bedroom

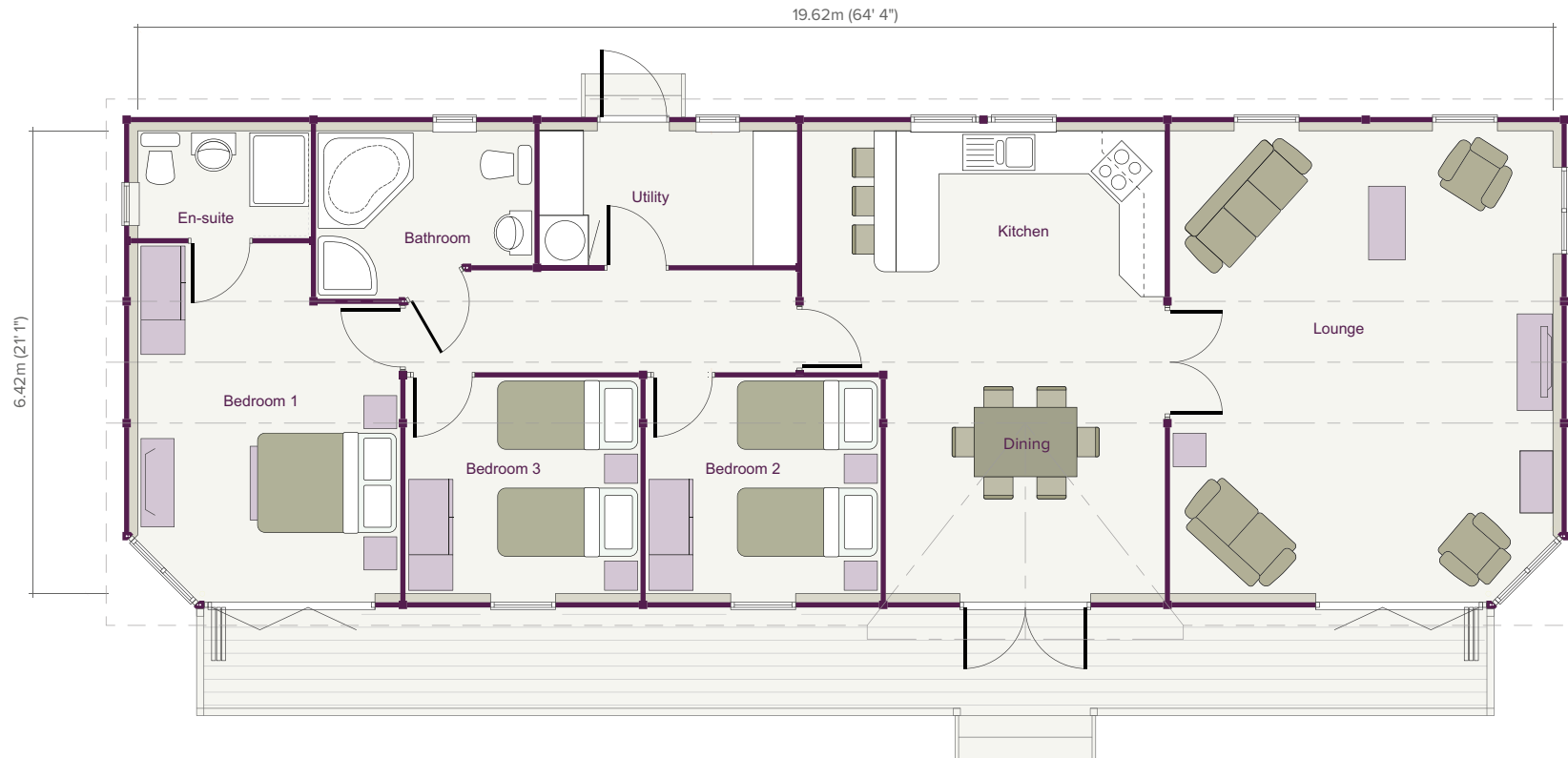
125.16m² (1,347 sq ft)



ELEVATIONS SCALE 1:200

STYLISH CONTEMPORARY

FLOOR PLAN SCALE 1:100



ROOM DIMENSIONS

Lounge 5.31m x 6.42m (17' 5" x 21' 1")
 Kitchen/Dining 5.03m / 3.87m x 6.42m
 (16' 6" / 12' 8" x 21' 1")
 Hall/Utility 3.57m x 1.86m (11' 9" x 6' 1")

Bedroom 1 3.64m x 4.86m / 4.02m
 (11' 11" x 15' 11" / 13' 2")
 En-suite 2.40m x 1.49m (7' 10" x 4' 11")
 Bedroom 2 3.26m x 3.00m (10' 8" x 9' 10")

Bedroom 3 3.26m x 3.00m (10' 8" x 9' 10")
 Bathroom 3.03m x 2.33m (9' 11" x 7' 8")

BUILDINGS FOR LIFE

Norwegian Log Buildings Limited, 230 London Road, Reading RG6 1AH | 0118 966 9236 | sales@norwegianlog.co.uk | www.norwegianlog.co.uk

[@norwegianlog](https://twitter.com/norwegianlog) | [@norwegianlogbuildings](https://facebook.com/norwegianlogbuildings) | [norwegianlogbuildings](https://instagram.com/norwegianlogbuildings) | [norwegianlogbui](https://pinterest.com/norwegianlogbui)