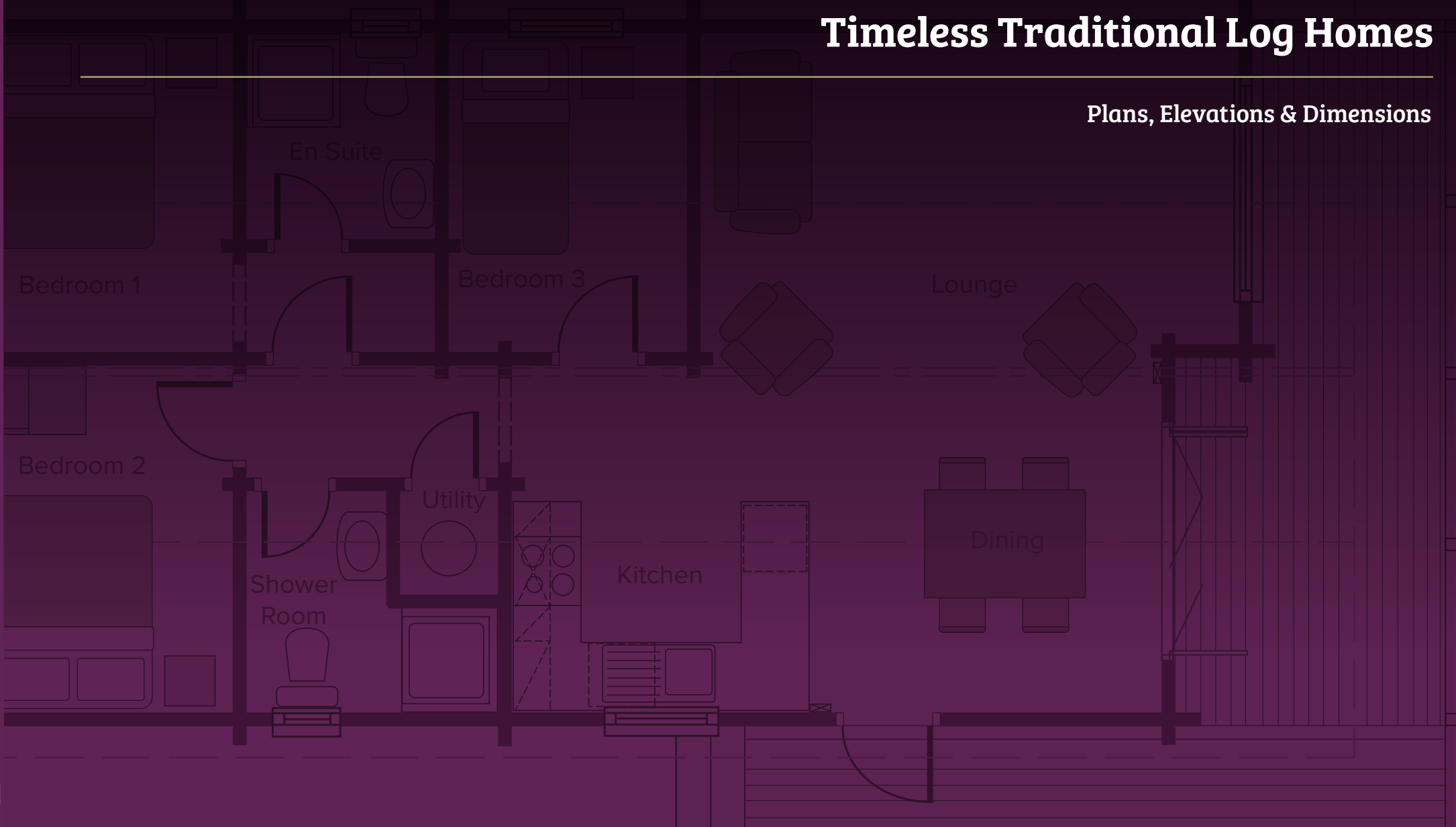


Timeless Traditional Log Homes

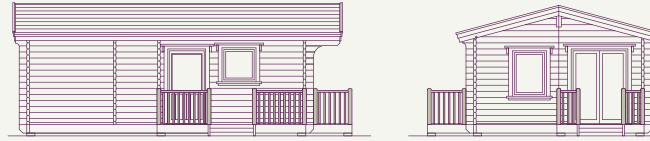
Plans, Elevations & Dimensions



Kelso

1 Bedroom

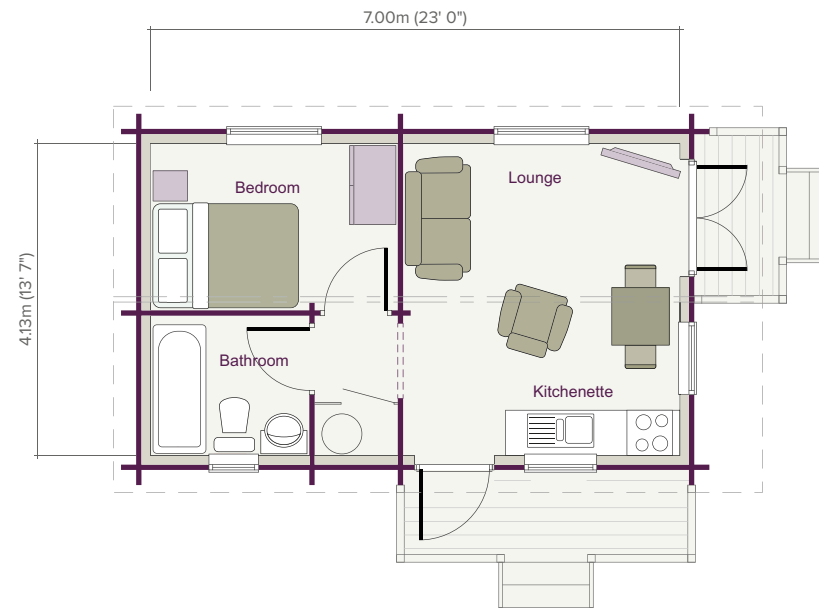
28.91m² (311 sq ft)



ELEVATIONS SCALE 1:200

TIMELESS TRADITIONAL

FLOOR PLAN SCALE 1:100



ROOM DIMENSIONS

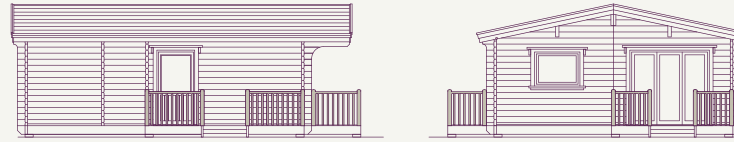
Living Area	3.66m x 4.13m	(12' 0" x 13' 7")
Bedroom	3.27m x 2.21m	(10' 9" x 7' 3")

Bathroom	2.10m x 1.85m	(6' 11" x 6' 1")
----------	---------------	------------------

Melrose

1 Bedroom

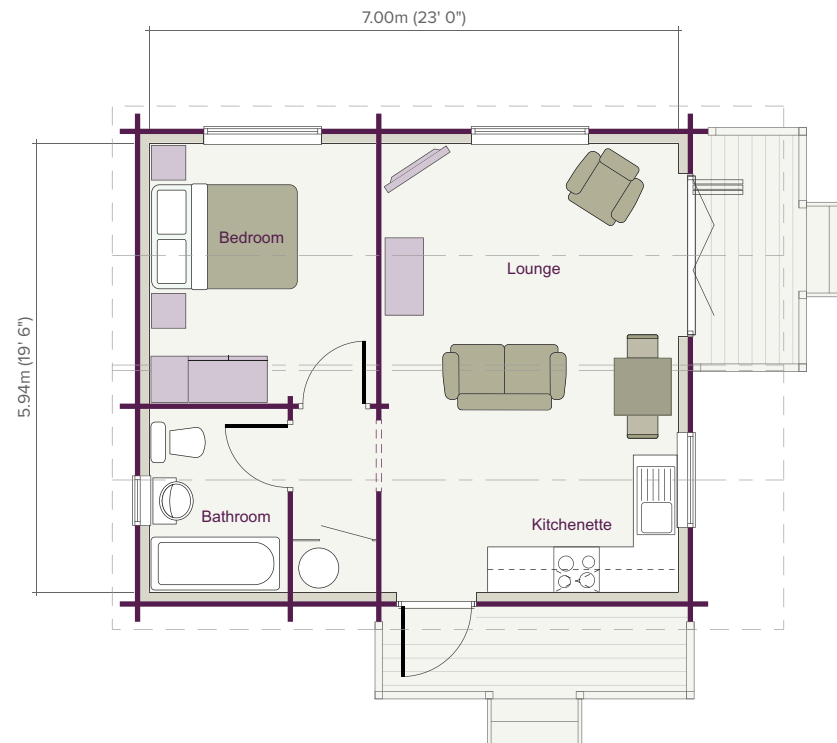
41.58m² (447 sq ft)



ELEVATIONS SCALE 1:200

TIMELESS TRADITIONAL

FLOOR PLAN SCALE 1:100



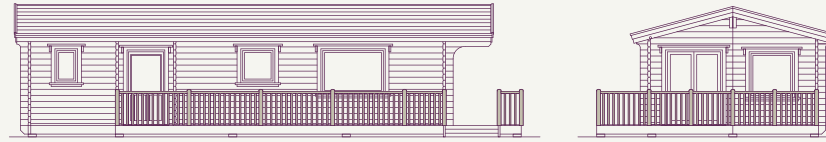
ROOM DIMENSIONS

Living Area	3.93m x 5.94m	(12' 11" x 19' 6")
Bedroom	3.00m x 3.45m	(9' 10" x 11' 4")
Bathroom	1.83m x 2.43m	(6' 0" x 7' 11")

Cresta

2 Bedroom

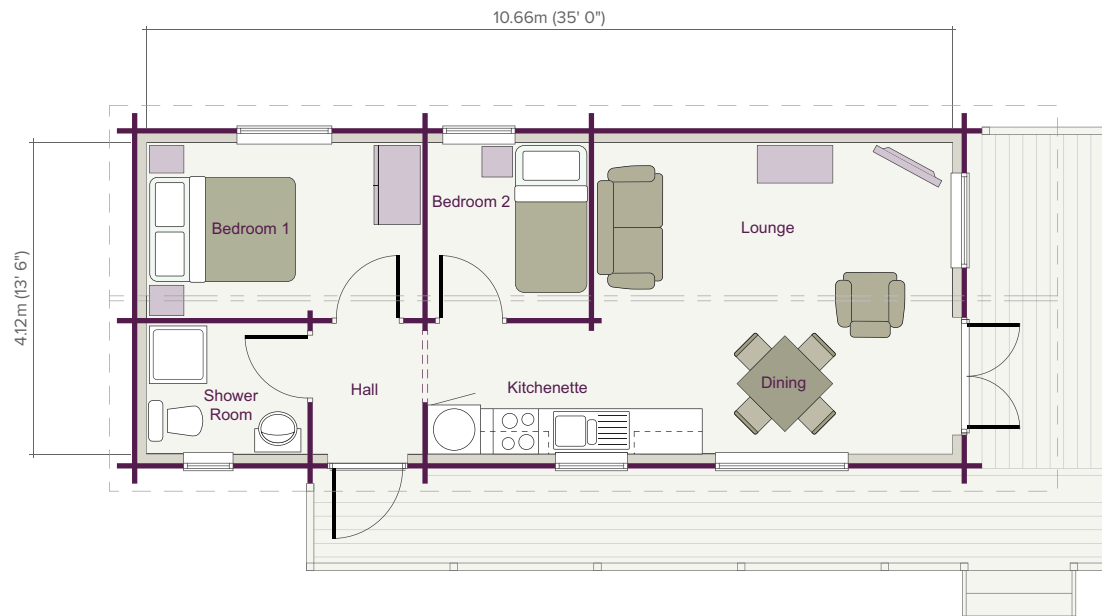
43.90m² (473 sq ft)



ELEVATIONS SCALE 1:200

TIMELESS TRADITIONAL

FLOOR PLAN SCALE 1:100



ROOM DIMENSIONS

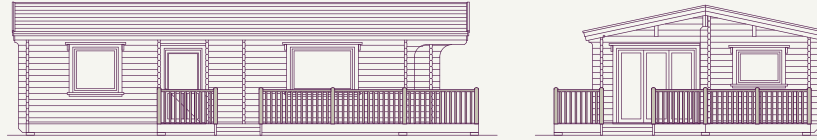
Living Area	4.74m x 4.12m	(15' 6" x 13' 6")
Entrance Hall	1.45m x 1.73m	(4' 9" x 5' 8")
Bedroom 1	3.65m x 2.32m	(12' 0" x 7' 7")

Bedroom 2	2.13m x 2.32m	(7' 0" x 7' 7")
Shower Room	2.13m x 1.73m	(7' 0" x 5' 8")

Brecon

2 Bedroom

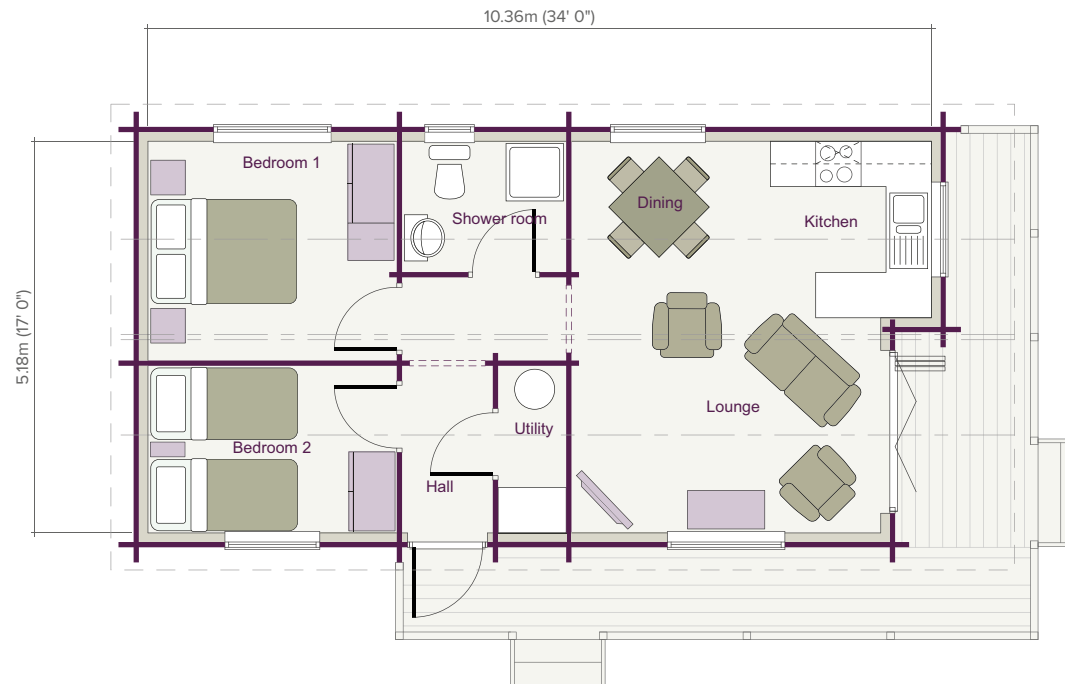
51.76m² (557 sq ft)



ELEVATIONS SCALE 1:200

TIMELESS TRADITIONAL

FLOOR PLAN SCALE 1:100



ROOM DIMENSIONS

Living Area 4.09m / 4.76m x 5.18m
(13' 5" / 15' 7" x 17' 0")

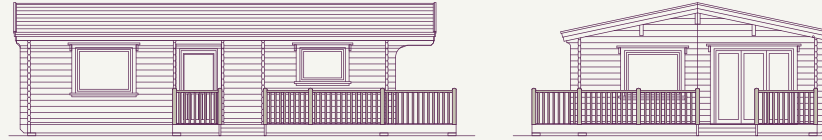
Entrance Hall 1.20m x 2.21m (3' 11" x 7' 3")
Utility 0.90m x 2.21m (2' 11" x 7' 3")
Bedroom 1 3.29m x 2.90m (10' 10" x 9' 6")

Bedroom 2 3.29m x 2.21m (10' 10" x 7' 3")
Shower Room 2.17m x 1.73m (7' 1" x 5' 8")

Sherwood

2 Bedroom

54.30m² (585 sq ft)

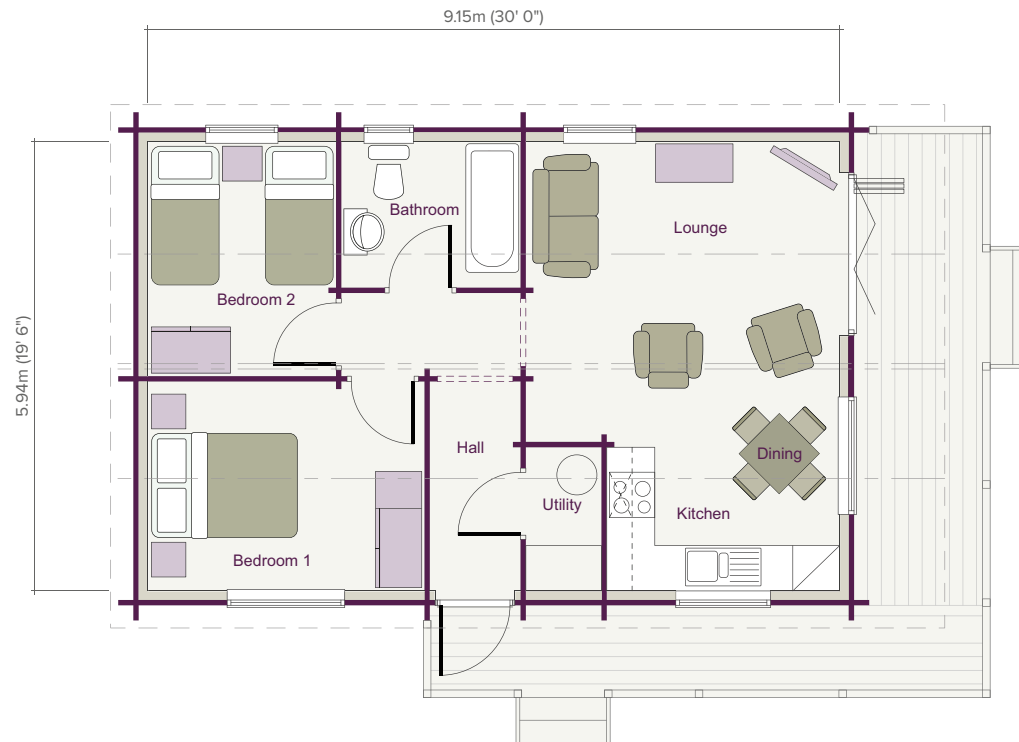


ELEVATIONS SCALE 1:200

TIMELESS TRADITIONAL

Deluxe 6.8m (22' 3") external width version available. Please ask for details.

FLOOR PLAN SCALE 1:100



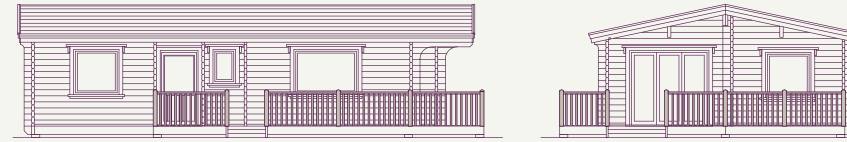
ROOM DIMENSIONS

Living Area	4.15m / 3.08m x 5.94m (13' 7" / 10' 1" x 19' 6")	Entrance Hall	1.20m x 2.77m	(3' 11" x 9' 1")	Bedroom 2	2.49m x 3.10m	(8' 2" x 10' 2")
		Utility	1.00m x 1.90m	(3' 3" x 6' 3")	Bathroom	2.37m x 1.93m	(7' 9" x 6' 4")
		Bedroom 1	3.66m x 2.77m	(12' 0" x 9' 1")			

Alpine

2 Bedroom

59.31m² (638 sq ft)

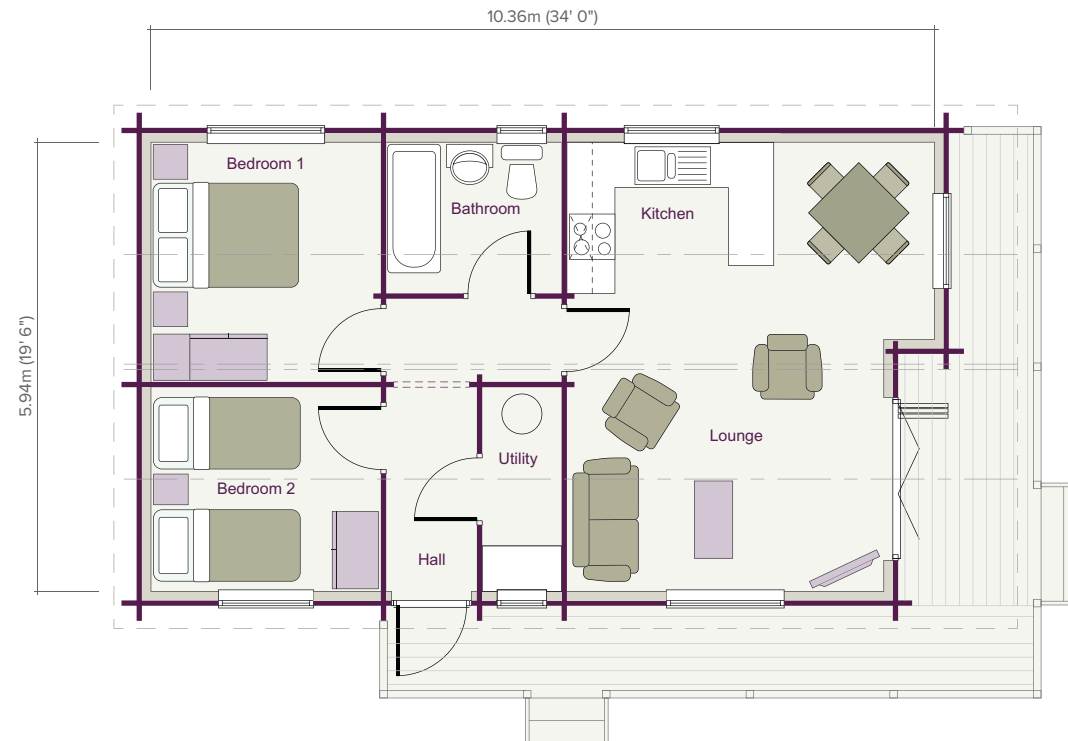


ELEVATIONS SCALE 1:200

TIMELESS TRADITIONAL

Deluxe 6.8m (22' 3") external width version available. Please ask for details.

FLOOR PLAN SCALE 1:100



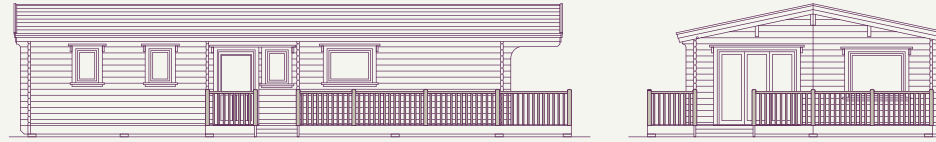
ROOM DIMENSIONS

Living Area	4.19m / 4.86m x 5.94m (13' 9" / 16' 0" x 19' 6")	Entrance Hall	1.20m x 2.70m	(3' 11" x 8' 10")	Bedroom 2	3.04m x 2.70m	(10' 0" x 8' 10")
		Utility	1.05m x 2.70m	(3' 5" x 8' 10")	Bathroom	2.32m x 2.00m	(7' 7" x 6' 6")
		Bedroom 1	3.04m x 3.17m	(10' 0" x 10' 5")			

Malvern

2 Bedroom

72.40m² (780 sq ft)

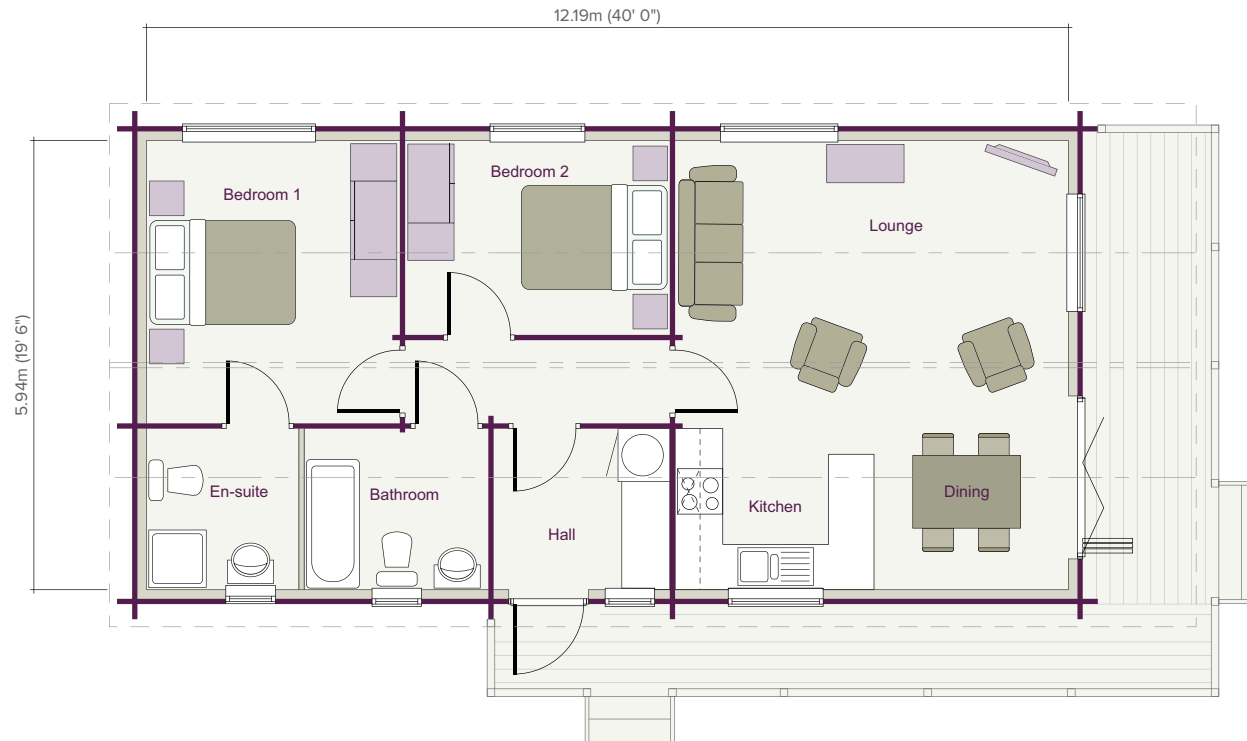


ELEVATIONS SCALE 1:200

TIMELESS TRADITIONAL

Deluxe 6.8m (22' 3") external width version available. Please ask for details.

FLOOR PLAN SCALE 1:100



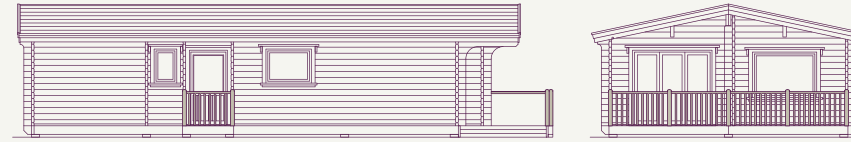
ROOM DIMENSIONS

Living Area	5.20m x 5.94m	(17' 1" x 19' 6")	En-suite	2.00m x 2.13m	(6' 7" x 7' 0")
Hall/Utility	2.33m x 2.13m	(7' 8" x 7' 0")	Bedroom 2	3.50m x 2.57m	(11' 6" x 8' 5")
Bedroom 1	3.35m x 3.74m	(11' 0" x 12' 3")	Bathroom	2.42m x 2.13m	(7' 11" x 7' 0")

Lomond

3 Bedroom

66.60m² (717 sq ft)

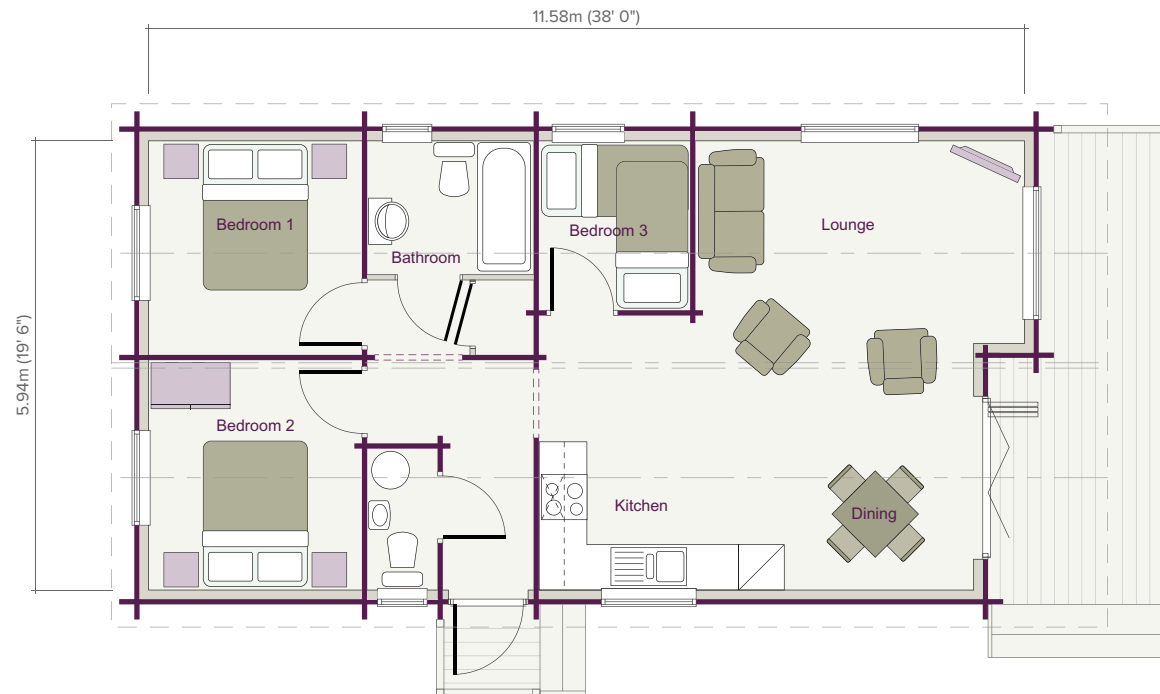


ELEVATIONS SCALE 1:200

TIMELESS TRADITIONAL

Deluxe 6.8m (22' 3") external width version available. Please ask for details.

FLOOR PLAN SCALE 1:100



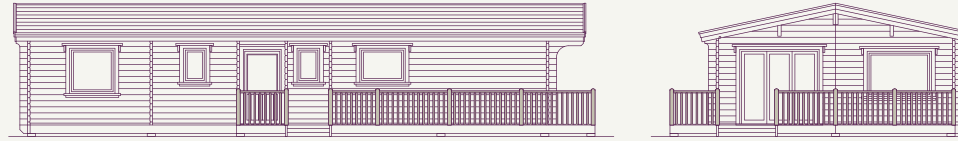
ROOM DIMENSIONS

Living Area	5.75m / 4.35m x 5.94m (18' 10" / 14' 3" x 19' 6")	W/C	0.93m x 1.87m (3' 1" x 6' 2")	Bedroom 3	2.00m x 2.24m (6' 7" x 7' 4")
Entrance Hall	1.20m x 3.04m (3' 11" x 10' 0")	Bedroom 1	2.82m x 2.82m (9' 3" x 9' 3")	Bathroom	2.20m x 1.76m (7' 3" x 5' 9")
		Bedroom 2	2.82m x 3.04m (9' 3" x 10' 0")		

Nordic

3 Bedroom

79.65m² (857 sq ft)

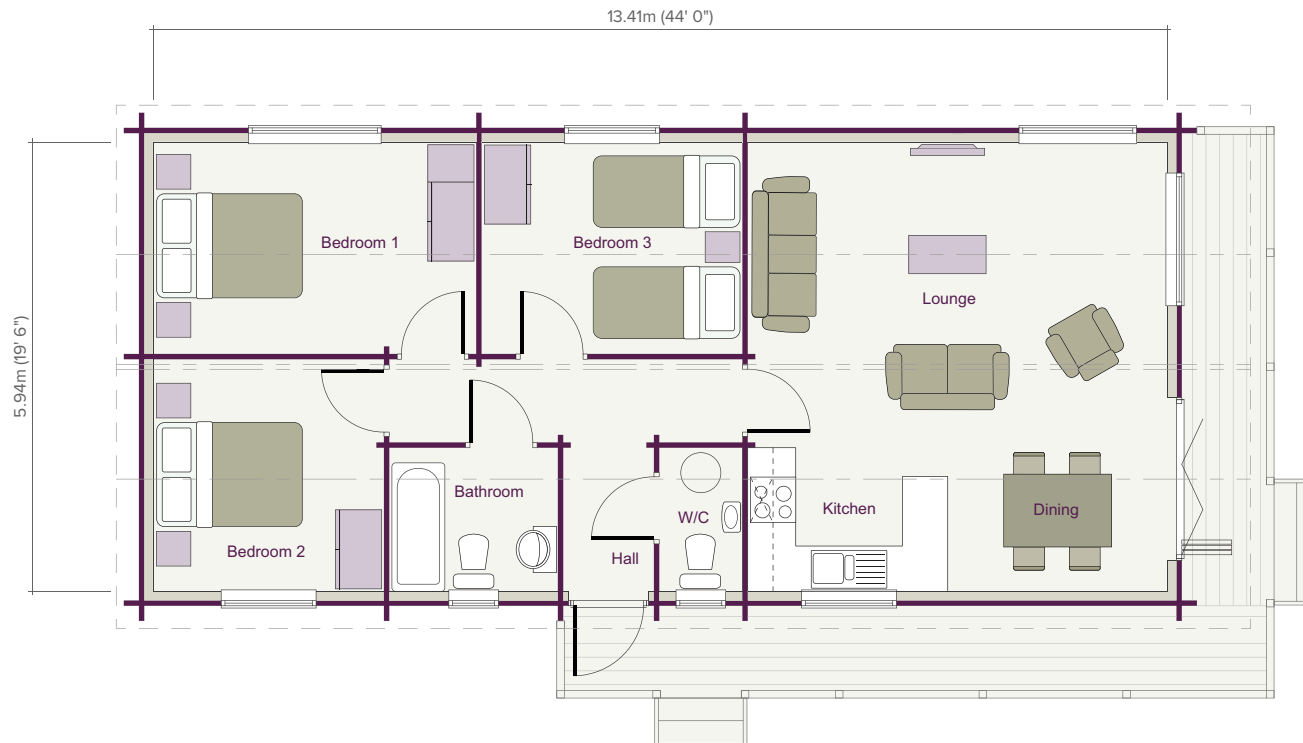


ELEVATIONS SCALE 1:200

TIMELESS TRADITIONAL

Deluxe 6.8m (22' 3") external width version available. Please ask for details.

FLOOR PLAN SCALE 1:100



ROOM DIMENSIONS

Living Area	5.50m x 5.94m	(18' 3" x 19' 6")	Bedroom 1	4.27m x 2.80m	(14' 0" x 9' 2")	Bathroom	2.23m x 1.90m	(7' 4" x 6' 3")
Entrance Hall	1.30m x 1.90m	(4' 3" x 6' 3")	Bedroom 2	3.05m x 3.07m	(10' 0" x 10' 1")			
W/C	1.10m x 1.90m	(3' 7" x 6' 3")	Bedroom 3	3.45m x 2.80m	(11' 4" x 9' 2")			

Pennine

3 Bedroom

88.00m² (948 sq ft)

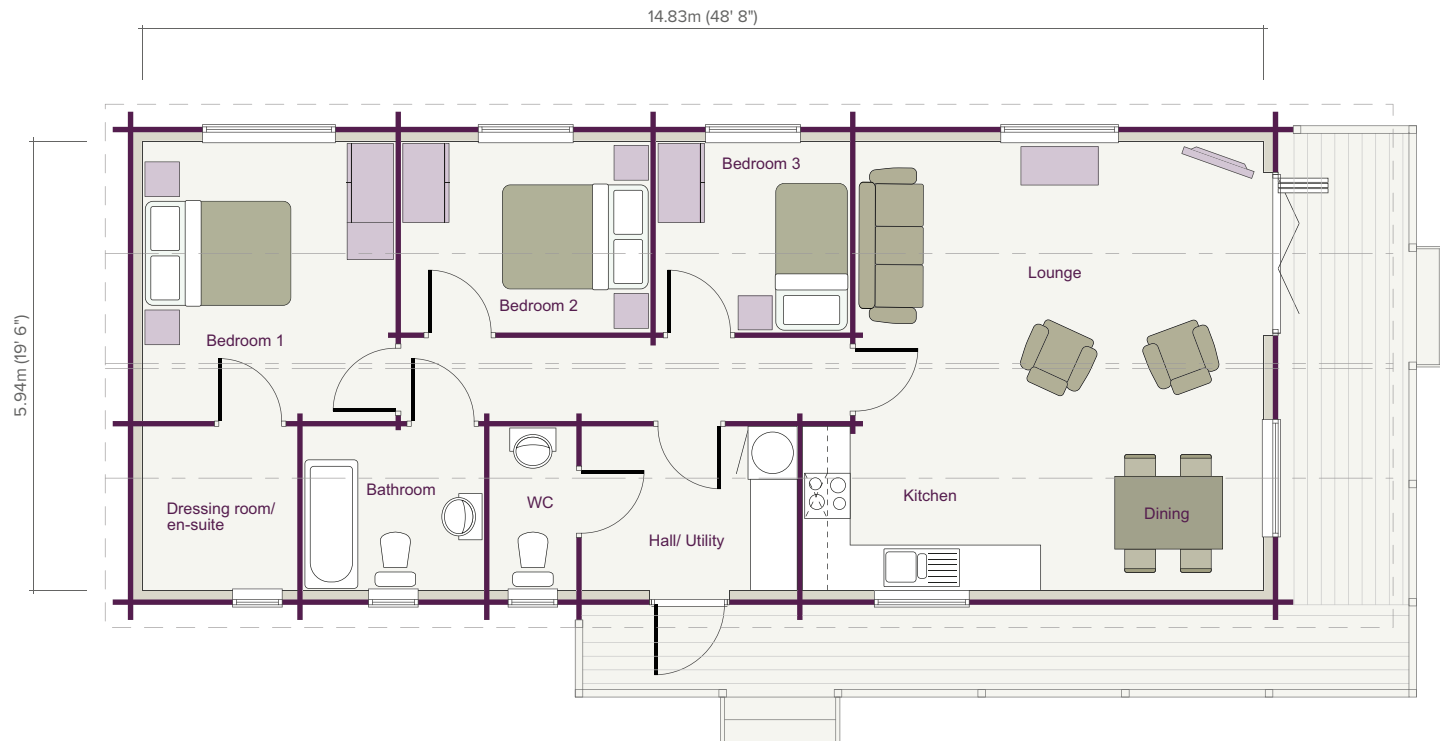


ELEVATIONS SCALE 1:200

TIMELESS TRADITIONAL

Deluxe 6.8m (22' 3") external width version available. Please ask for details.

FLOOR PLAN SCALE 1:100



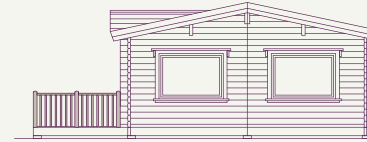
ROOM DIMENSIONS

Living Area	5.40m / 6.10m x 5.94m (17' 9" / 20' 0" x 19' 6")	W/C	1.15m x 2.17m (3' 9" x 7' 1")	Bedroom 2	3.30m x 2.53m (10' 10" x 8' 4")
Hall/Utility	2.85m x 2.17m (9' 4" x 7' 1")	Bedroom 1	3.35m x 3.70m (11' 0" x 12' 2")	Bedroom 3	2.57m x 2.53m (8' 5" x 8' 4")
		Dressing Room	2.05m x 2.17m (6' 9" x 7' 1")	Bathroom	2.40m x 2.17m (7' 10" x 7' 1")

Grampian

3 Bedroom

94.15m² (1,013 sq ft)

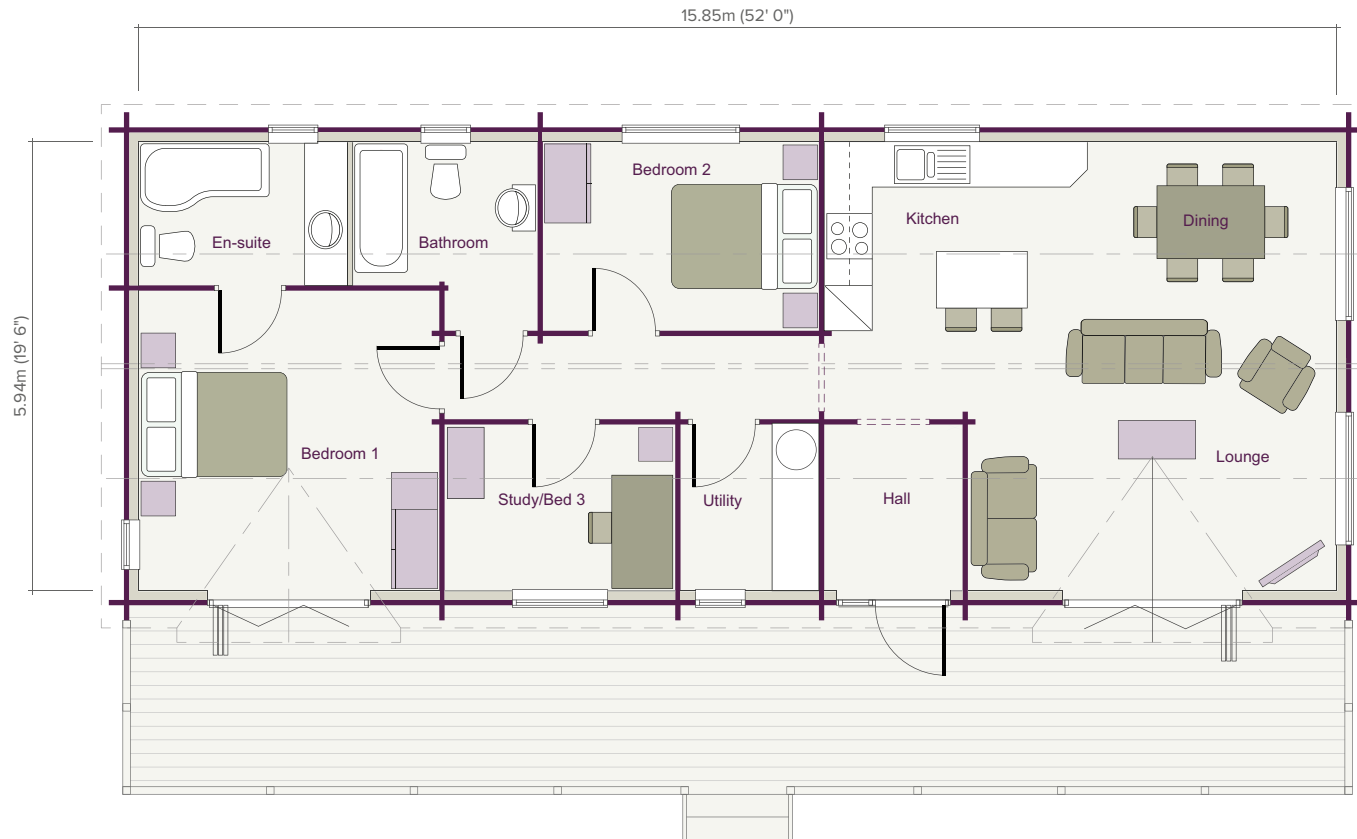


ELEVATIONS SCALE 1:200

TIMELESS TRADITIONAL

Deluxe 6.8m (22' 3") external width version available. Please ask for details.

FLOOR PLAN SCALE 1:100



ROOM DIMENSIONS

Living Area	6.78m / 4.88m x 5.94m (22' 3" / 16' 0" x 19' 6")	Utility	1.83m x 2.20m (6' 0" x 7' 3")	Bedroom 2	3.65m x 2.50m (12' 0" x 8' 2")
Entrance Hall	1.83m x 2.20m (6' 0" x 7' 3")	Bedroom 1	3.98m x 3.97m (13' 1" x 13' 0")	Bedroom 3	3.05m x 2.20m (10' 0" x 7' 2")
		En-suite	2.75m x 1.90m (9' 0" x 6' 3")	Bathroom	2.43m x 1.90m (8' 0" x 6' 3")

New Highland

3 Bedroom

98.72m² (1,062 sq ft)

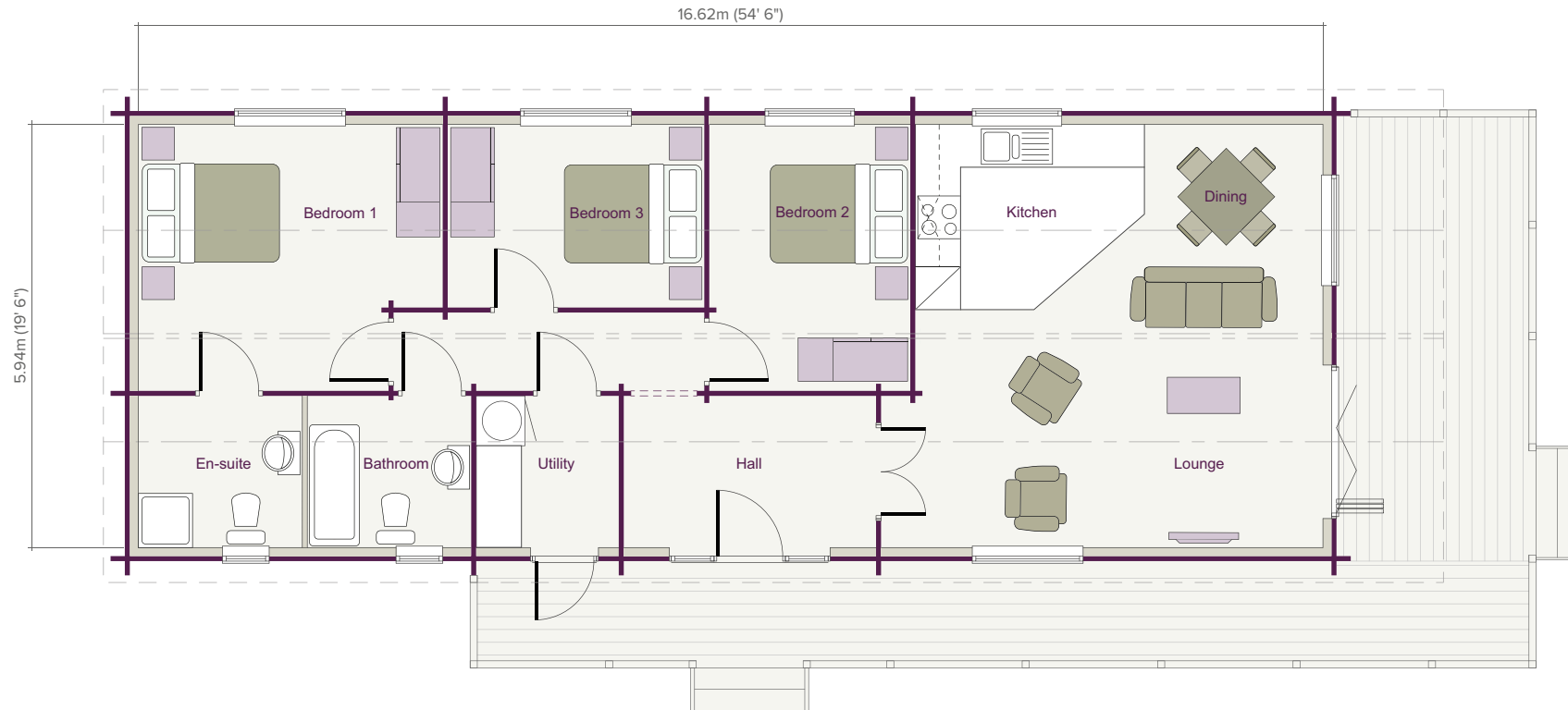


ELEVATIONS SCALE 1:200

TIMELESS TRADITIONAL

Deluxe 6.8m (22' 3") external width version available. Please ask for details.

FLOOR PLAN SCALE 1:100



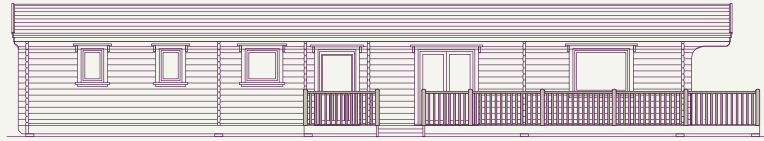
ROOM DIMENSIONS

Living Area	5.72m / 6.20m x 5.94m (18' 9" / 20' 4" x 19' 6")	Utility	2.00m x 2.13m (6' 6" x 7' 0")	Bedroom 2	2.82m x 3.74m (9' 3" x 12' 3")
Entrance Hall	3.54m x 2.13m (11' 7" x 7' 0")	Bedroom 1	4.27m x 3.74m (14' 0" x 12' 3")	Bedroom 3	3.60m x 2.57m (11' 9" x 8' 5")
		En-suite	2.29m x 2.13m (7' 6" x 7' 0")	Bathroom	2.29m x 2.13m (7' 6" x 7' 0")

Wicklow

3 Bedroom

101.16m² (1,089 sq ft)

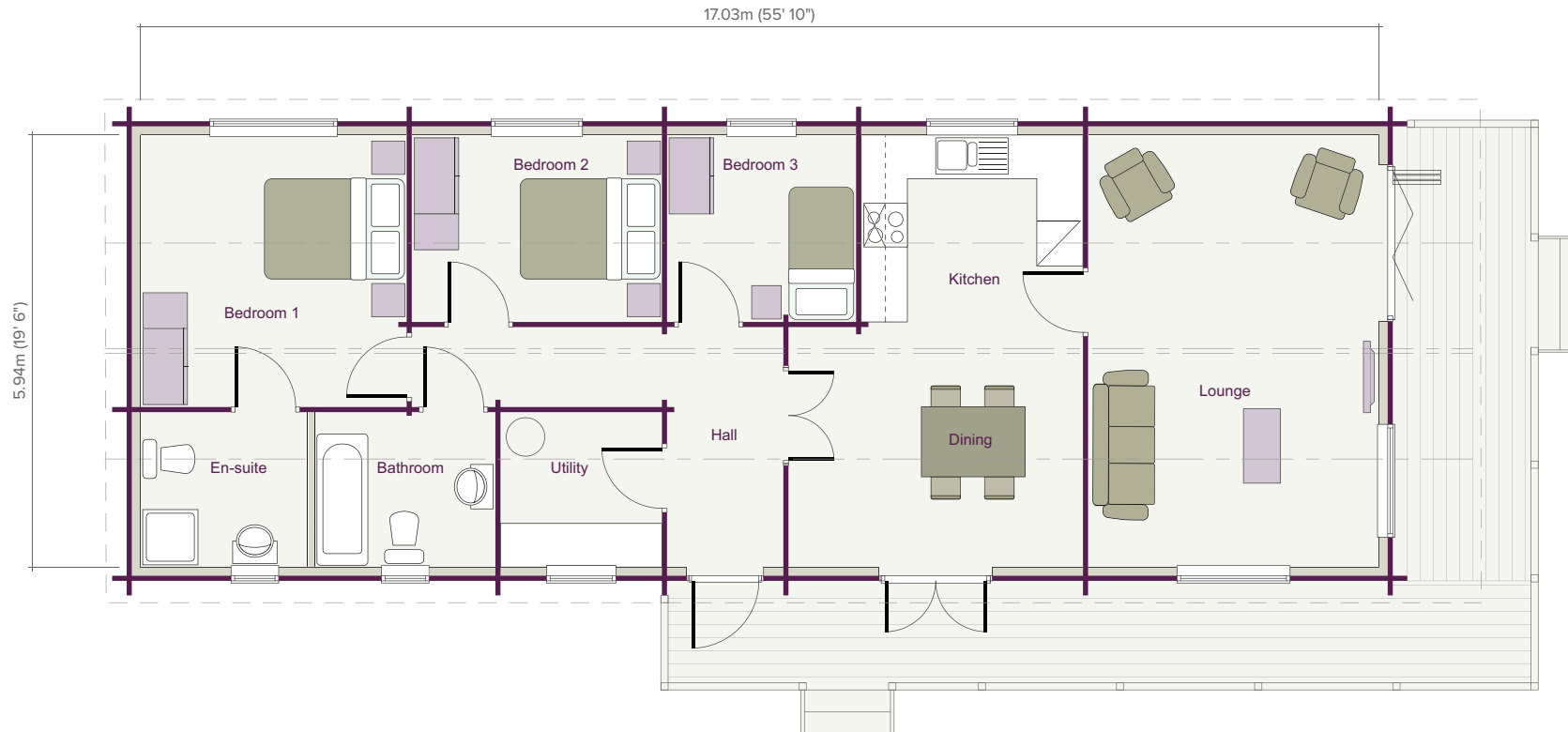


ELEVATIONS SCALE 1:200

TIMELESS TRADITIONAL

Deluxe 6.8m (22' 3") external width version available. Please ask for details.

FLOOR PLAN SCALE 1:100



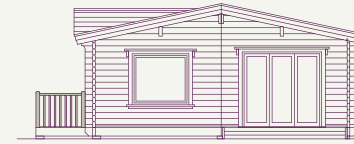
ROOM DIMENSIONS

Lounge	4.00m x 5.94m	(13' 1" x 19' 6")	Entrance Hall	1.60m x 3.30m	(5' 3" x 10' 10")	Bedroom 2	3.44m x 2.57m	(11' 3" x 8' 5")
Kitchen/Dining	3.05m / 4.05m x 5.94m	(10' 0" / 13' 3" x 19' 6")	Utility	2.22m x 2.13m	(7' 3" x 7' 0")	Bedroom 3	2.60m x 2.57m	(8' 6" x 8' 5")
			Bedroom 1	3.66m x 3.74m	(12' 0" x 12' 3")	Bathroom	2.48m x 2.13m	(8' 2" x 7' 0")
			En-suite/Shower	2.30m x 2.13m	(7' 7" x 7' 0")			

Mendip

3 Bedroom

125.96m² (1,356 sq ft)



ELEVATIONS SCALE 1:200

TIMELESS TRADITIONAL

FLOOR PLAN SCALE 1:100



ROOM DIMENSIONS

Lounge	5.31m x 6.42m	(17' 5" x 21' 1")	Hall/Utility	3.57m x 2.10m	(11' 9" x 6' 11")	Bedroom 2	3.25m x 3.03m	(10' 8" x 9' 11")
Kitchen/Dining	3.87m / 5.03m x 6.42m	(12' 8" / 16' 6" x 21' 1")	Bedroom 1	3.64m x 4.25m	(11' 11" x 13' 11")	Bedroom 3	3.27m x 3.03m	(10' 9" x 9' 11")
			En-suite	2.40m x 2.10m	(7' 10" x 6' 11")	Bathroom	3.00m x 2.10m	(9' 10" x 6' 11")

Windermere

3 Bedroom

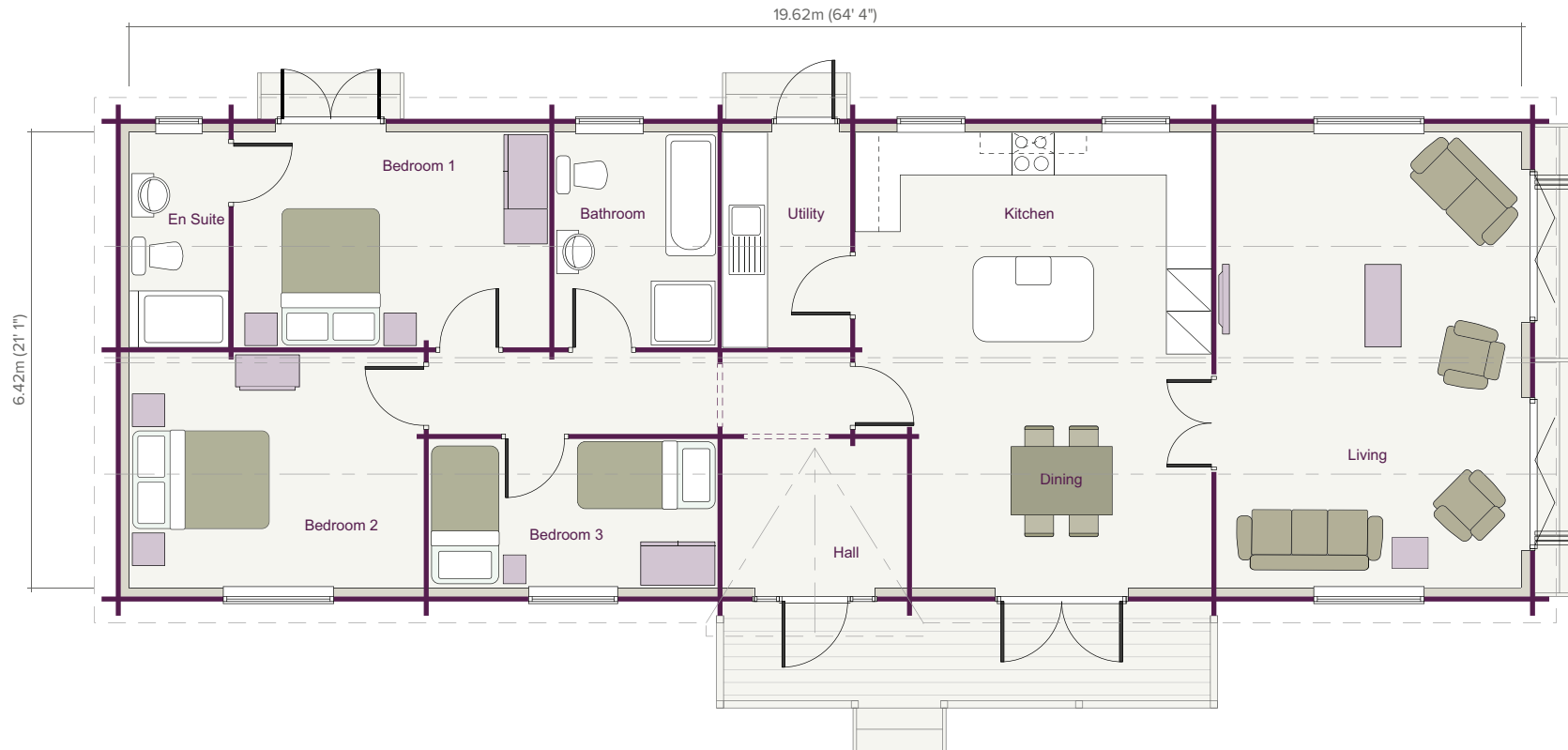
125.96m² (1,356 sq ft)



ELEVATIONS SCALE 1:200

TIMELESS TRADITIONAL

FLOOR PLAN SCALE 1:100



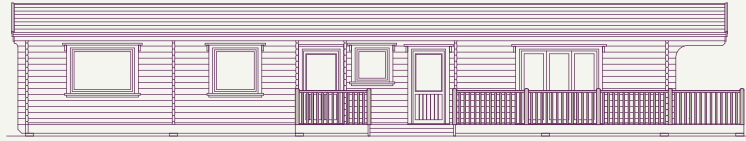
ROOM DIMENSIONS

Lounge	4.30m x 6.42m	(14' 1" x 21' 1")	Utility	1.80m x 3.03m	(5' 11" x 9' 11")	Bedroom 3	4.07m x 2.10m	(13' 4" x 6' 11")
Kitchen/Dining	5.02m / 4.22m x 6.42m	(16' 6" / 13'10" x 21' 1")	Bedroom 1	4.45m x 3.03m	(14' 7" x 9' 11")	Bathroom	2.30m x 3.03m	(7' 7" x 9' 11")
Entrance Hall	2.60m x 2.10m	(8' 6" x 6' 11")	En-suite	1.40m x 3.03m	(4' 7" x 9' 11")			
			Bedroom 2	4.15m x 3.32m	(13' 7" x 10' 11")			

Cairngorm

4 Bedroom

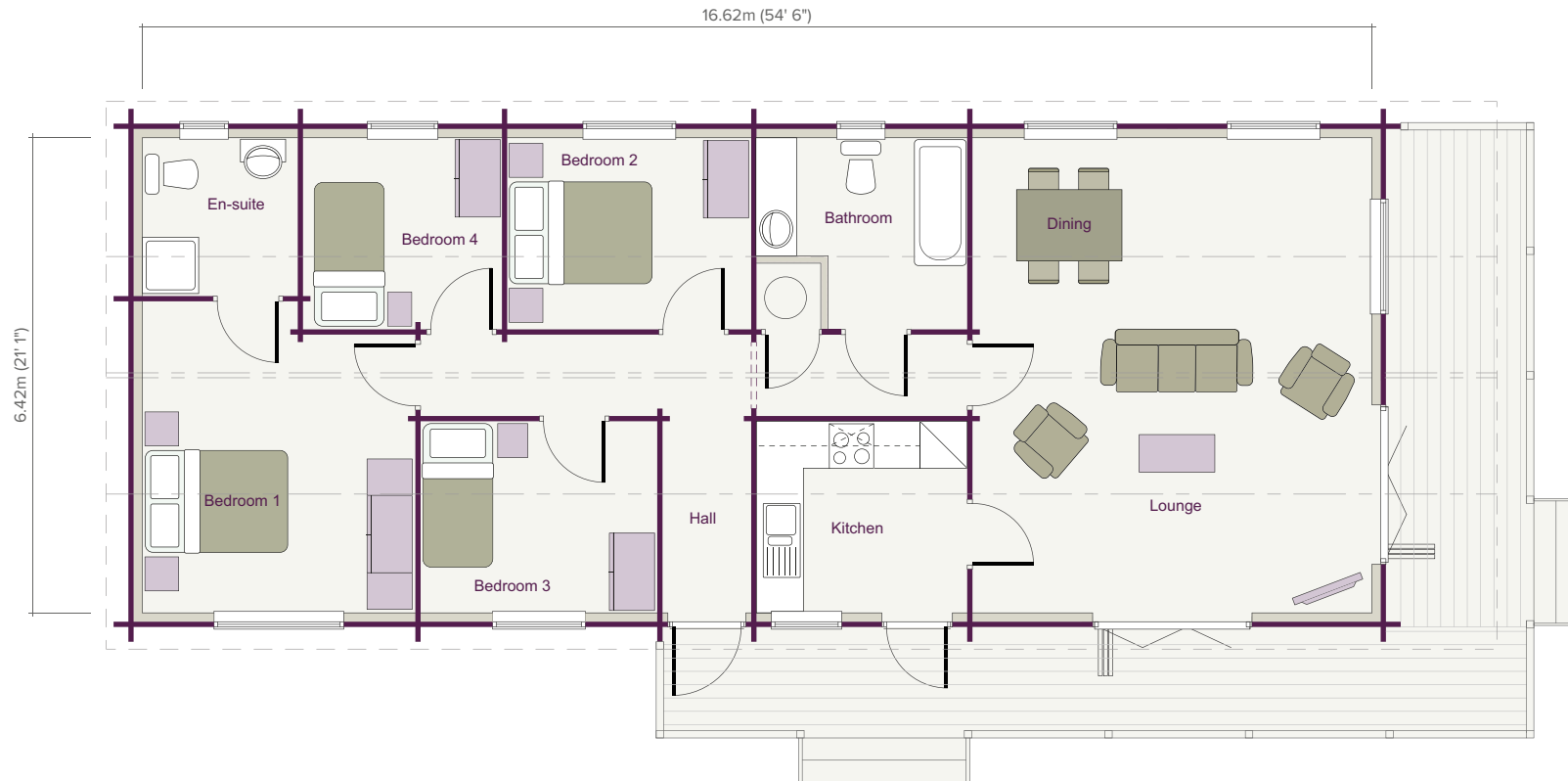
106.70m² (1,148 sq ft)



ELEVATIONS SCALE 1:200

TIMELESS TRADITIONAL

FLOOR PLAN SCALE 1:100



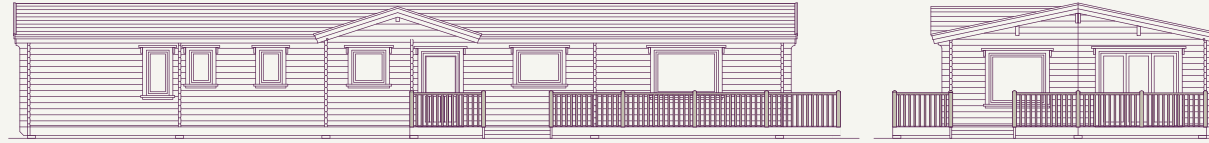
ROOM DIMENSIONS

Lounge	5.40m x 6.42m	(17' 9" x 21' 1")	Bedroom 1	3.69m x 4.21m / 3.76m	Bedroom 3	3.20m x 2.59m	(10' 6" x 8' 6")	
Kitchen	2.85m x 2.59m	(9' 4" x 8' 6")	En-suite	2.10m x 2.14m	(6' 11" x 7' 0")	Bedroom 4	2.69m x 2.59m	(8' 10" x 8' 6")
Entrance Hall	1.20m x 2.59m	(3' 11" x 8' 6")	Bedroom 2	3.30m x 2.59m	(10' 10" x 8' 6")	Bathroom	2.85m x 2.59m	(9' 4" x 8' 6")

Cambrian

4 Bedroom

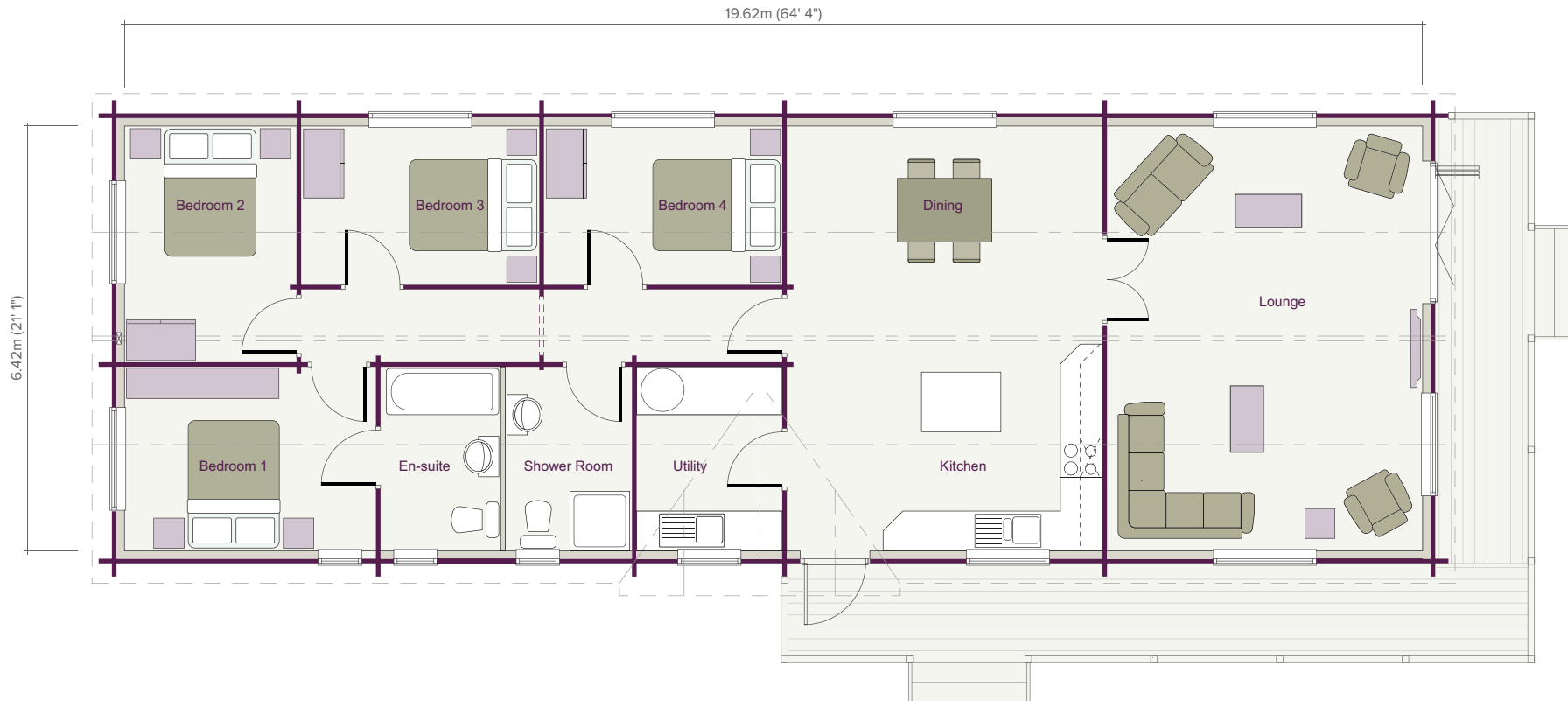
125.96m² (1,356 sq ft)



ELEVATIONS SCALE 1:200

TIMELESS TRADITIONAL

FLOOR PLAN SCALE 1:100



ROOM DIMENSIONS

Lounge	4.77m x 6.42m	(15' 8" x 21' 1")	En-suite/Shower	1.80m x 2.78m	(5' 11" x 9' 1")	Shower Room	1.90m x 2.78m	(6' 3" x 9' 1")
Kitchen/Dining	4.77m x 6.42m	(15' 8" x 21' 1")	Bedroom 2	2.60m x 3.57m	(8' 6" x 11' 9")			
Utility	2.20m x 2.78m	(7' 3" x 9' 1")	Bedroom 3	3.60m x 2.43m	(11'10" x 8' 0")			
Bedroom 1	3.80m x 2.78m	(12' 6" x 9' 1")	Bedroom 4	3.60m x 2.43m	(11'10" x 8' 0")			

BUILDINGS FOR LIFE

Norwegian Log Buildings Limited, 230 London Road, Reading RG6 1AH | 0118 966 9236 | sales@norwegianlog.co.uk | www.norwegianlog.co.uk

[@norwegianlog](https://twitter.com/norwegianlog) | [@norwegianlogbuildings](https://www.facebook.com/norwegianlogbuildings) | [norwegianlogbuildings](https://www.instagram.com/norwegianlogbuildings) | [norwegianlogbui](https://www.pinterest.com/norwegianlogbui)